

**KD-Validated Anti-SSB Mouse Monoclonal Antibody**  
**Mouse monoclonal antibody**  
**Catalog # AGI2073****Specification**

---

**KD-Validated Anti-SSB Mouse Monoclonal Antibody - Product Information**

Application	WB, FC, ICC
Primary Accession	<a href="#">P05455</a>
Reactivity	Rat, Human, Mouse
Clonality	Monoclonal
Isotype	Mouse IgG2a
Calculated MW	Predicted, 47 kDa, observed, 47 kDa kDa
Gene Name	SSB
Aliases	SSB; Small RNA Binding Exonuclease Protection Factor La; Lupus La Protein; La Autoantigen; La/SSB; LARP3; La; La Ribonucleoprotein Domain Family, Member 3; Sjogren Syndrome Type B Antigen; Sjogren Syndrome Antigen B; SS-B; Sjogren Syndrome Antigen B (Autoantigen La); La Ribonucleoprotein; Lupus La Antigen; SS-B/La Protein; Autoantigen La Recombinant protein of human SSB
Immunogen	

**KD-Validated Anti-SSB Mouse Monoclonal Antibody - Additional Information**

Gene ID	6741
<b>Other Names</b>	
Lupus La protein, La autoantigen, La ribonucleoprotein, Sjogren syndrome type B antigen, SS-B, SSB	

**KD-Validated Anti-SSB Mouse Monoclonal Antibody - Protein Information****Name** SSB**Function**

Binds to the 3' poly(U) terminus of nascent RNA polymerase III transcripts, protecting them from exonuclease digestion and facilitating their folding and maturation (PubMed:<a href="http://www.uniprot.org/citations/2470590" target="\_blank">2470590</a>, PubMed:<a href="http://www.uniprot.org/citations/3192525" target="\_blank">3192525</a>). In case of Coxsackievirus B3 infection, binds to the viral internal ribosome entry site (IRES) and stimulates the IRES- mediated translation (PubMed:<a href="http://www.uniprot.org/citations/12384597" target="\_blank">12384597</a>).

**Cellular Location**

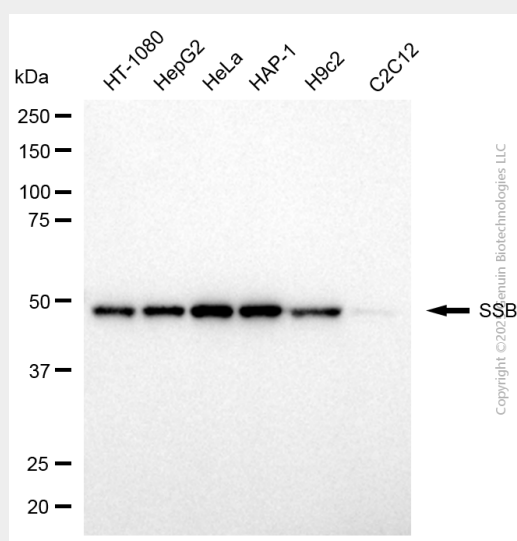
Nucleus.

## KD-Validated Anti-SSB Mouse Monoclonal Antibody - Protocols

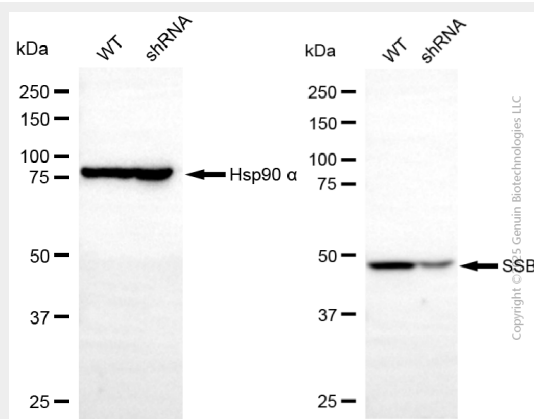
Provided below are standard protocols that you may find useful for product applications.

- [Western Blot](#)
- [Blocking Peptides](#)
- [Dot Blot](#)
- [Immunohistochemistry](#)
- [Immunofluorescence](#)
- [Immunoprecipitation](#)
- [Flow Cytometry](#)
- [Cell Culture](#)

## KD-Validated Anti-SSB Mouse Monoclonal Antibody - Images

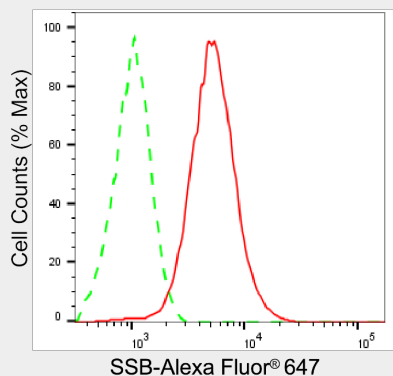


Western blotting analysis using anti-SSB antibody (Cat#64834). Total cell lysates (30 µg for H9c2 and C2C12, 10 µg for others) from various cell lines were loaded and separated by SDS-PAGE. The blot was incubated with anti-SSB antibody (Cat#64834, 1:2,500) and HRP-conjugated goat anti-mouse secondary antibody (Cat#101, 1:20,000) respectively. Image was developed using NaQ™ ECL Substrate Kit (Cat#716).



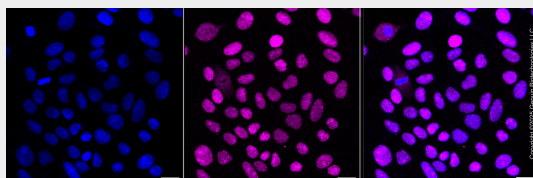
Western blotting analysis using anti-SSB antibody (Cat#64834). SSB expression in wild-type (WT) and SSB shRNA knockdown (KD) HT-1080 cells with 20 µg of total cell lysates. Hsp90 α serves as a loading control. The blot was incubated with anti-SSB antibody (Cat#64834, 1:2,500) and HRP-conjugated goat anti-mouse secondary antibody (Cat#101, 1:20,000) respectively. Image

was developed using NaQ™ ECL Substrate Kit (Cat#716).



Copyright ©2025 Genuin Biotechnologies LLC

Flow cytometric analysis of SSB expression in HepG2 cells using anti-SSB antibody (Cat#64834, 1:2,000). Green, isotype control; red, SSB.



Copyright ©2025 Genuin Biotechnologies LLC

Immunocytochemical staining of HepG2 cells with anti-SSB associated protein antibody (Cat#64834, 1:1,000). Nuclei were stained blue with DAPI; SSB associated protein was stained magenta with Alexa Fluor® 647. Images were taken using Leica stellaris 5. Protein abundance based on laser Intensity and smart gain: Medium. Scale bar, 20 µm.