

KD-Validated Anti-MSI1 Mouse Monoclonal Antibody
Mouse monoclonal antibody
Catalog # AGI2079**Specification**

KD-Validated Anti-MSI1 Mouse Monoclonal Antibody - Product Information

Application	WB
Primary Accession	O43347
Reactivity	Human
Clonality	Monoclonal
Isotype	Mouse IgG2a
Calculated MW	Predicted, 39 kDa, observed, 36 kDa kDa
Gene Name	MSI1
Aliases	MSI1; Musashi RNA Binding Protein 1; RNA-Binding Protein Musashi Homolog 1; Musashi-1; Musashi (Drosophila) Homolog 1; Musashi Homolog 1 (Drosophila); Musashi1
Immunogen	Recombinant protein of human MSI1

KD-Validated Anti-MSI1 Mouse Monoclonal Antibody - Additional Information

Gene ID	4440
Other Names	
RNA-binding protein Musashi homolog 1, Musashi-1, MSI1	

KD-Validated Anti-MSI1 Mouse Monoclonal Antibody - Protein Information**Name** MSI1**Function**

RNA binding protein that regulates the expression of target mRNAs at the translation level. Regulates expression of the NOTCH1 antagonist NUMB. Binds RNA containing the sequence 5'-GUUAGUUAGUUAGUU- 3' and other sequences containing the pattern 5'-[GA]U(1-3)AGU-3'. May play a role in the proliferation and maintenance of stem cells in the central nervous system (By similarity).

Cellular Location

Cytoplasm {ECO:0000250|UniProtKB:Q61474}. Nucleus {ECO:0000250|UniProtKB:Q61474}

Tissue Location

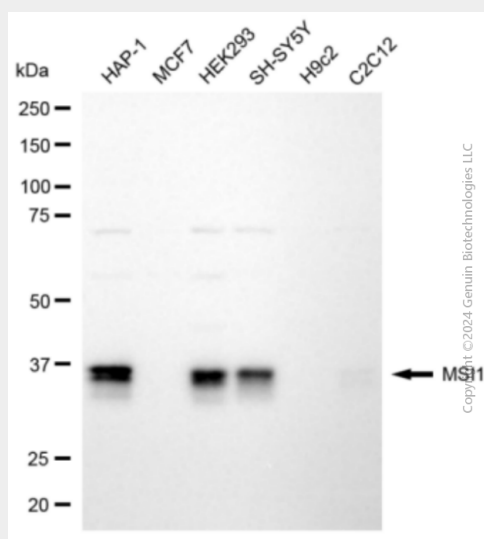
Detected in fetal kidney, brain, liver and lung, and in adult brain and pancreas. Detected in hepatoma cell lines

KD-Validated Anti-MSI1 Mouse Monoclonal Antibody - Protocols

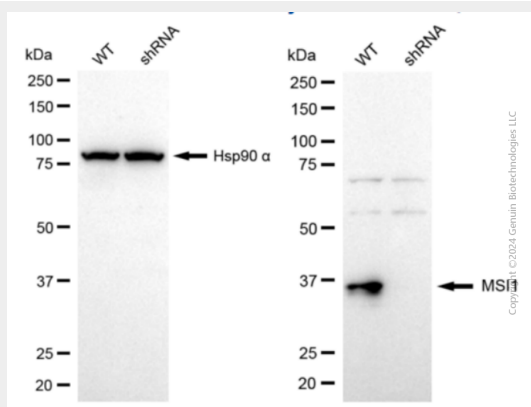
Provided below are standard protocols that you may find useful for product applications.

- [Western Blot](#)
- [Blocking Peptides](#)
- [Dot Blot](#)
- [Immunohistochemistry](#)
- [Immunofluorescence](#)
- [Immunoprecipitation](#)
- [Flow Cytometry](#)
- [Cell Culture](#)

KD-Validated Anti-MSI1 Mouse Monoclonal Antibody - Images



Western blotting analysis using anti-MSI1 antibody (Cat#AGI2079). Total cell lysates (30 µg) from various cell lines were loaded and separated by SDS-PAGE. The blot was incubated with anti-MSI1 antibody (Cat#AGI2079, 1:2,500) and HRP-conjugated goat anti-mouse secondary antibody respectively.



Western blotting analysis using anti-MSI1 antibody (Cat#AGI2079). MSI1 expression in wild-type (WT) and MSI1 shRNA knockdown (KD) HeLa cells with 20 µg of total cell lysates. Hsp90 α serves as a loading control. The blot was incubated with anti-MSI1 antibody (Cat#AGI2079, 1:2,500) and HRP-conjugated goat anti-mouse secondary antibody respectively.