

KD-Validated Anti-NDUFB10 Mouse Monoclonal Antibody
Mouse monoclonal antibody
Catalog # AGI2083**Specification**

KD-Validated Anti-NDUFB10 Mouse Monoclonal Antibody - Product Information

Application	WB
Primary Accession	O96000
Reactivity	Rat, Human, Mouse
Clonality	Monoclonal
Isotype	Mouse IgG1
Calculated MW	Predicted, 21 kDa, observed, 21 kDa kDa
Gene Name	NDUFB10
Aliases	NDUFB10; NADH:Ubiquinone Oxidoreductase Subunit B10; PDSW; NADH Dehydrogenase (Ubiquinone) 1 Beta Subcomplex, 10, 22kDa; NADH Dehydrogenase [Ubiquinone] 1 Beta Subcomplex Subunit 10; NADH-Ubiquinone Oxidoreductase PDSW Subunit; Complex I PDSW Subunit; Complex I-PDSW; CI-PDSW; NADH Dehydrogenase (Ubiquinone) 1 Beta Subcomplex, 10 (22kD, PDSW); NADH Ubiquinone Oxidoreductase PDSW Subunit (RH 16p13.3); MC1DN35
Immunogen	Recombinant protein of human NDUFB10

KD-Validated Anti-NDUFB10 Mouse Monoclonal Antibody - Additional Information

Gene ID	4716
Other Names	
NADH dehydrogenase [ubiquinone] 1 beta subcomplex subunit 10, Complex I-PDSW, CI-PDSW, NADH-ubiquinone oxidoreductase PDSW subunit, NDUFB10	

KD-Validated Anti-NDUFB10 Mouse Monoclonal Antibody - Protein Information**Name** NDUFB10**Function**

Accessory subunit that is involved in the functional assembly of the mitochondrial respiratory chain complex I. Complex I has an NADH dehydrogenase activity with ubiquinone as an immediate electron acceptor and mediates the transfer of electrons from NADH to the respiratory chain.

Cellular Location

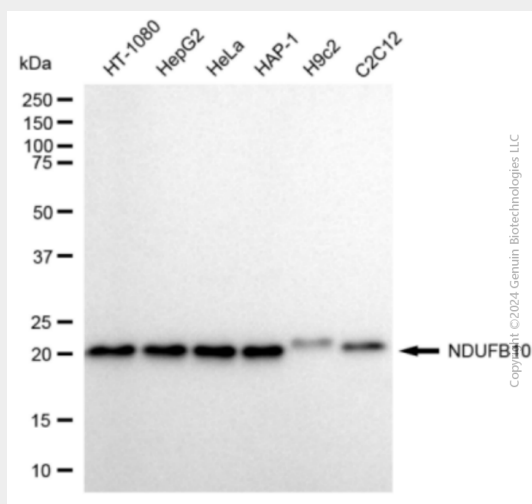
Mitochondrion inner membrane; Peripheral membrane protein; Matrix side

KD-Validated Anti-NDUFB10 Mouse Monoclonal Antibody - Protocols

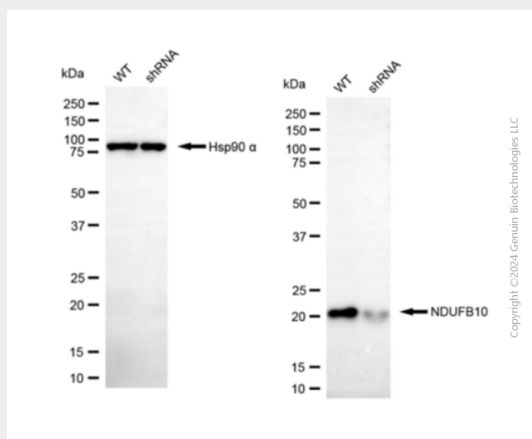
Provided below are standard protocols that you may find useful for product applications.

- [Western Blot](#)
- [Blocking Peptides](#)
- [Dot Blot](#)
- [Immunohistochemistry](#)
- [Immunofluorescence](#)
- [Immunoprecipitation](#)
- [Flow Cytometry](#)
- [Cell Culture](#)

KD-Validated Anti-NDUFB10 Mouse Monoclonal Antibody - Images



Western blotting analysis using anti-NDUFB10 antibody (Cat#64850). Total cell lysates (30 µg) from various cell lines were loaded and separated by SDS-PAGE. The blot was incubated with anti-NDUFB10 antibody (Cat#64850, 1:2,000) and HRP-conjugated goat anti-mouse secondary antibody (Cat#101, 1:20,000) respectively. Image was developed using NaQ™ ECL Substrate Kit (Cat#716).



Western blotting analysis using anti-NDUFB10 antibody (Cat#64850). NDUFB10 expression in wild type (WT) and NDUFB10 shRNA knockdown (KD) HeLa cells with 20 µg of total cell lysates. Hsp90 α serves as a loading control. The blot was incubated with anti-NDUFB10 antibody (Cat#64850, 1:2,000) and HRP-conjugated goat anti-mouse secondary antibody (Cat#101,

1:20,000) respectively. Image was developed using FeQ™ ECL Substrate Kit (Cat#226).