

**KD-Validated Anti-NDUFB11 Mouse Monoclonal Antibody**  
**Mouse monoclonal antibody**  
**Catalog # AGI2090****Specification****KD-Validated Anti-NDUFB11 Mouse Monoclonal Antibody - Product Information**

Application	WB
Primary Accession	<a href="#">Q9NX14</a>
Reactivity	Rat, Human, Mouse
Clonality	Monoclonal
Isotype	Mouse IgG1
Calculated MW	Predicted, 17 kDa, observed, 18 kDa kDa
Gene Name	NDUFB11
Aliases	NDUFB11; NADH:Ubiquinone Oxidoreductase Subunit B11; NP17.3; Np15; NADH Dehydrogenase [Ubiquinone] 1 Beta Subcomplex Subunit 11, Mitochondrial; NADH Dehydrogenase (Ubiquinone) 1 Beta Subcomplex, 11, 17.3kDa; NADH-Ubiquinone Oxidoreductase ESSS Subunit; Complex I NP17.3 Subunit; Neuronal Protein 17.3; Complex I-ESSS; CI-ESSS; P17.3; MC1DN30; Np17.3
Immunogen	Recombinant protein of human NDUFB11

**KD-Validated Anti-NDUFB11 Mouse Monoclonal Antibody - Additional Information**

Gene ID	54539
<b>Other Names</b>	
NADH dehydrogenase [ubiquinone] 1 beta subcomplex subunit 11, mitochondrial, Complex I-ESSS, CI-ESSS, NADH-ubiquinone oxidoreductase ESSS subunit, Neuronal protein 17.3, Np17.3, p17.3, NDUFB11	

**KD-Validated Anti-NDUFB11 Mouse Monoclonal Antibody - Protein Information****Name** NDUFB11**Function**

Accessory subunit of the mitochondrial membrane respiratory chain NADH dehydrogenase (Complex I), that is believed not to be involved in catalysis. Complex I functions in the transfer of electrons from NADH to the respiratory chain. The immediate electron acceptor for the enzyme is believed to be ubiquinone.

**Cellular Location**

Mitochondrion inner membrane; Single-pass membrane protein. Note=The interaction with BCAP31 mediates mitochondria localization.

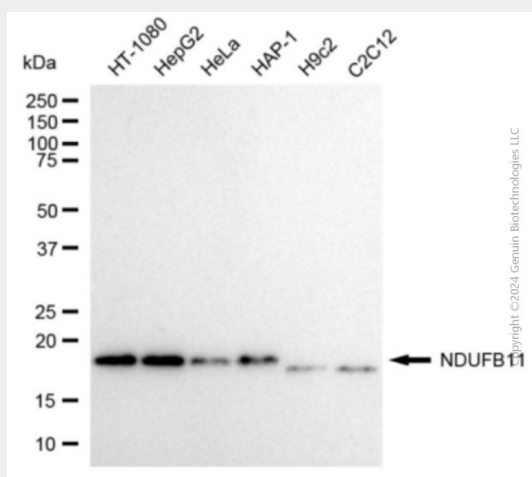
**Tissue Location**  
Ubiquitous.

### KD-Validated Anti-NDUFB11 Mouse Monoclonal Antibody - Protocols

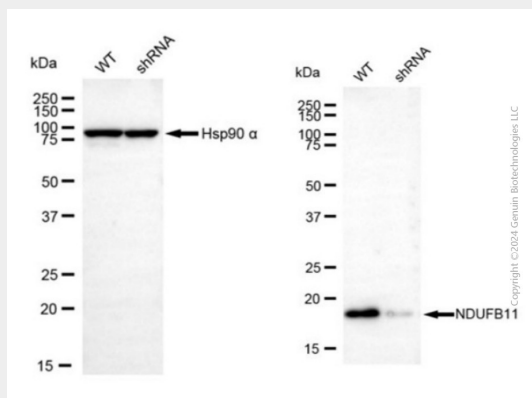
Provided below are standard protocols that you may find useful for product applications.

- [Western Blot](#)
- [Blocking Peptides](#)
- [Dot Blot](#)
- [Immunohistochemistry](#)
- [Immunofluorescence](#)
- [Immunoprecipitation](#)
- [Flow Cytometry](#)
- [Cell Culture](#)

### KD-Validated Anti-NDUFB11 Mouse Monoclonal Antibody - Images



Western blotting analysis using anti-NDUFB11 antibody (Cat#AGI2090). Total cell lysates (30 µg) from various cell lines were loaded and separated by SDS-PAGE. The blot was incubated with anti-NDUFB11 antibody (Cat#AGI2090, 1:2,500) and HRP-conjugated goat anti-mouse secondary antibody respectively.



Western blotting analysis using anti-NDUFB11 antibody (Cat#AGI2090). NDUFB11 expression in wild-type (WT) and NDUFB11 shRNA knockdown (KD) HeLa cells with 20 µg of total cell lysates. Hsp90 α serves as a loading control. The blot was incubated with anti-NDUFB11 antibody

(Cat#AGI2090, 1:2,500) and HRP-conjugated goat anti-mouse secondary antibody respectively.