

KD-Validated Anti-SPTAN1 Mouse Monoclonal Antibody
Mouse monoclonal antibody
Catalog # AGI2097**Specification**

KD-Validated Anti-SPTAN1 Mouse Monoclonal Antibody - Product Information

Application	WB
Primary Accession	Q13813
Reactivity	Rat, Human, Mouse
Clonality	Monoclonal
Isotype	Mouse IgG1
Calculated MW	Predicted, 285 kDa, observed, 285 kDa
Gene Name	KDa
Aliases	SPTAN1 SPTAN1; Spectrin Alpha, Non-Erythrocytic 1; Spectrin Alpha Chain, Non-Erythrocytic 1; Spectrin, Non-Erythroid Alpha Subunit; Fodrin Alpha Chain; Alpha-II Spectrin; Alpha-Fodrin; SPTA2; Epididymis Secretory Sperm Binding Protein; Spectrin, Non-Erythroid Alpha Chain; HMND11; DEVEP; EIEE5; HMN11; SPG91; DEE5
Immunogen	Recombinant protein of human SPTAN1

KD-Validated Anti-SPTAN1 Mouse Monoclonal Antibody - Additional Information

Gene ID	6709
Other Names	
Spectrin alpha chain, non-erythrocytic 1, Alpha-II spectrin, Fodrin alpha chain, Spectrin, non-erythroid alpha subunit, SPTAN1, NEAS, SPTA2	

KD-Validated Anti-SPTAN1 Mouse Monoclonal Antibody - Protein Information**Name** SPTAN1**Synonyms** NEAS, SPTA2**Function**

Fodrin, which seems to be involved in secretion, interacts with calmodulin in a calcium-dependent manner and is thus candidate for the calcium-dependent movement of the cytoskeleton at the membrane.

Cellular Location

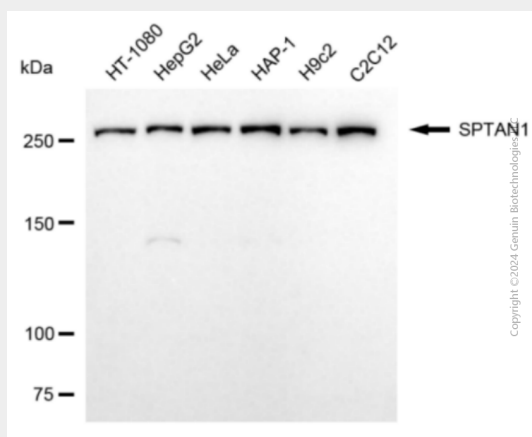
Cytoplasm, cytoskeleton. Cytoplasm, cell cortex. Note=Expressed along the cell membrane in podocytes and presumptive tubule cells during glomerulogenesis and is expressed along lateral cell margins in tubule cells.

KD-Validated Anti-SPTAN1 Mouse Monoclonal Antibody - Protocols

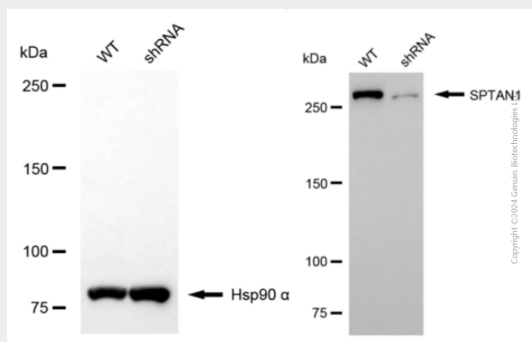
Provided below are standard protocols that you may find useful for product applications.

- [Western Blot](#)
- [Blocking Peptides](#)
- [Dot Blot](#)
- [Immunohistochemistry](#)
- [Immunofluorescence](#)
- [Immunoprecipitation](#)
- [Flow Cytometry](#)
- [Cell Culture](#)

KD-Validated Anti-SPTAN1 Mouse Monoclonal Antibody - Images



Western blotting analysis using anti-SPTAN1 antibody (Cat#AGI2097). Total cell lysates (30 µg) from various cell lines were loaded and separated by SDS-PAGE. The blot was incubated with anti-SPTAN1 antibody (Cat#AGI2097, 1:2,500) and HRP-conjugated goat anti-mouse secondary antibody respectively.



Western blotting analysis using anti-SPTAN1 antibody (Cat#AGI2097). SPTAN1 expression in wild-type (WT) and SPTAN1 shRNA knockdown (KD) HeLa cells with 20 µg of total cell lysates. Hsp90 α serves as a loading control. The blot was incubated with anti-SPTAN1 antibody (Cat#AGI2097, 1:2,500) and HRP-conjugated goat anti-mouse secondary antibody respectively.