

**KD-Validated Anti-HNRNPA1L2 Rabbit Monoclonal Antibody**  
**Rabbit monoclonal antibody**  
**Catalog # AGI2103****Specification**

---

**KD-Validated Anti-HNRNPA1L2 Rabbit Monoclonal Antibody - Product Information**

Application	WB, FC, ICC
Primary Accession	<a href="#">Q32P51</a>
Reactivity	Rat, Human, Mouse
Clonality	Monoclonal
Isotype	Rabbit IgG
Calculated MW	Predicted, 34 kDa, observed, 34 kDa
Gene Name	KDa HNRNPA1L2
Aliases	HNRNPA1L2; Heterogeneous Nuclear Ribonucleoprotein A1 Like 2; Heterogeneous Nuclear Ribonucleoprotein A1-Like 2; HnRNP Core Protein A1-Like 2; HnRNP A1-Like 2; LOC144983; HNRNPA1L
Immunogen	A synthesized peptide derived from human Heterogeneous Nuclear Ribonucleoprotein (A1-like)

**KD-Validated Anti-HNRNPA1L2 Rabbit Monoclonal Antibody - Additional Information**

Gene ID	144983
<b>Other Names</b>	
Heterogeneous nuclear ribonucleoprotein A1-like 2, hnRNP A1-like 2, hnRNP core protein A1-like 2, HNRNPA1L2, HNRNPA1L	

**KD-Validated Anti-HNRNPA1L2 Rabbit Monoclonal Antibody - Protein Information****Name** HNRNPA1L2**Synonyms** HNRNPA1L**Function**

Involved in the packaging of pre-mRNA into hnRNP particles, transport of poly(A) mRNA from the nucleus to the cytoplasm and may modulate splice site selection.

**Cellular Location**

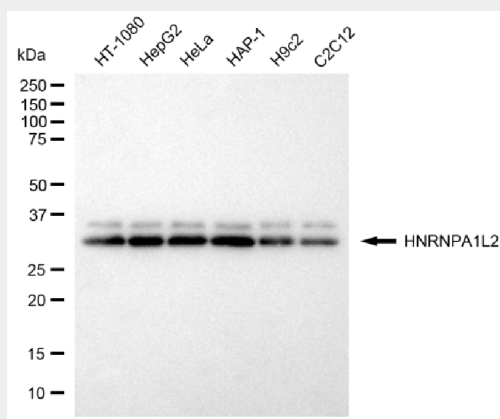
Nucleus. Cytoplasm.

**KD-Validated Anti-HNRNPA1L2 Rabbit Monoclonal Antibody - Protocols**

Provided below are standard protocols that you may find useful for product applications.

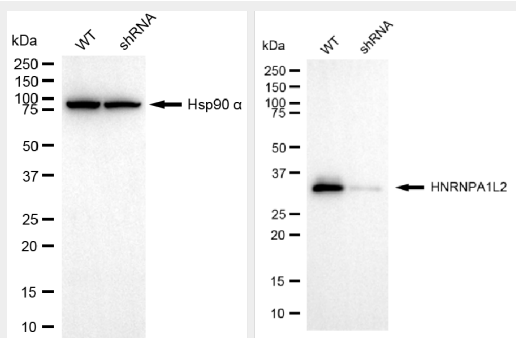
- [Western Blot](#)
- [Blocking Peptides](#)
- [Dot Blot](#)
- [Immunohistochemistry](#)
- [Immunofluorescence](#)
- [Immunoprecipitation](#)
- [Flow Cytometry](#)
- [Cell Culture](#)

## KD-Validated Anti-HNRNPA1L2 Rabbit Monoclonal Antibody - Images



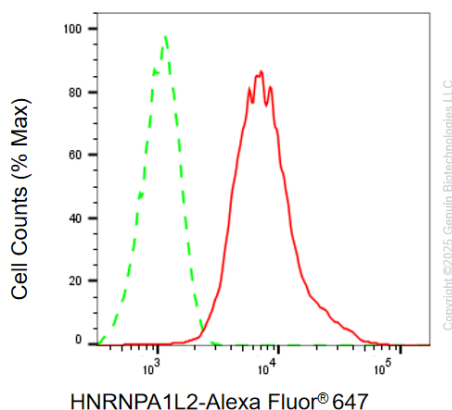
Copyright ©2025 Genuin Biotechnologies LLC

Western blotting analysis using anti-HNRNPA1L2 antibody (Cat#AGI2103). Total cell lysates (30 µg) from various cell lines were loaded and separated by SDS-PAGE. The blot was incubated with anti-HNRNPA1L2 antibody (Cat#AGI2103, 1:5,000) and HRP-conjugated goat anti-rabbit secondary antibody respectively.

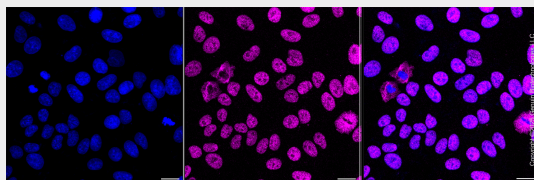


Copyright ©2025 Genuin Biotechnologies LLC

Western blotting analysis using anti-HNRNPA1L2 antibody (Cat#AGI2103). HNRNPA1L2 expression in wild-type (WT) and HNRNPA1L2 shRNA knockdown (KD) HeLa cells with 20 µg of total cell lysates. Hsp90 α serves as a loading control. The blot was incubated with anti-HNRNPA1L2 antibody (Cat#AGI2103, 1:5,000) and HRP-conjugated goat anti-rabbit secondary antibody respectively.



Flow cytometric analysis of HNRNPA1L2 expression in HepG2 cells using anti-HNRNPA1L2 antibody (Cat#AGI2103, 1:1,000). Green, isotype control; red, HNRNPA1L2.



Immunocytochemical staining of HepG2 cells with anti-HNRNPA1L2 antibody (Cat#AGI2103, 1:1,000). Nuclei were stained blue with DAPI; HNRNPA1L2 was stained magenta with Alexa Fluor® 647. Images were taken using Leica stellaris 5. Protein abundance based on laser Intensity and smart gain: Medium. Scale bar, 20 µm.