

KD-Validated Anti-NDUFA1 Rabbit Monoclonal Antibody
Rabbit monoclonal antibody
Catalog # AGI2105**Specification****KD-Validated Anti-NDUFA1 Rabbit Monoclonal Antibody - Product Information**

Application	WB, FC
Primary Accession	O15239
Reactivity	Human
Clonality	Monoclonal
Isotype	Rabbit IgG
Calculated MW	Predicted, 8 kDa, observed, 11 kDa KDa
Gene Name	NDUFA1
Aliases	NDUFA1; NADH:Ubiquinone Oxidoreductase Subunit A1; CI-MWFE; MWFE; NADH Dehydrogenase (Ubiquinone) 1 Alpha Subcomplex, 1, 7.5kDa; NADH Dehydrogenase [Ubiquinone] 1 Alpha Subcomplex Subunit 1; NADH-Ubiquinone Oxidoreductase MWFE Subunit; NADH:Ubiquinone Oxidoreductase (Complex I); Complex I MWFE Subunit; Type I Dehydrogenase; NADH Dehydrogenase (Ubiquinone) 1 Alpha Subcomplex, 1 (7.5kD, MWFE); Complex I-MWFE; MC1DN12; ZNF183
Immunogen	A synthesized peptide derived from human NDUFA1

KD-Validated Anti-NDUFA1 Rabbit Monoclonal Antibody - Additional Information

Gene ID	4694
Other Names	NADH dehydrogenase [ubiquinone] 1 alpha subcomplex subunit 1, Complex I-MWFE, CI-MWFE, NADH-ubiquinone oxidoreductase MWFE subunit, NDUFA1

KD-Validated Anti-NDUFA1 Rabbit Monoclonal Antibody - Protein Information**Name** NDUFA1**Function**

Accessory subunit of the mitochondrial membrane respiratory chain NADH dehydrogenase (Complex I), that is believed not to be involved in catalysis. Complex I functions in the transfer of electrons from NADH to the respiratory chain. The immediate electron acceptor for the enzyme is believed to be ubiquinone.

Cellular Location

Mitochondrion inner membrane; Single-pass membrane protein; Matrix side

Tissue Location

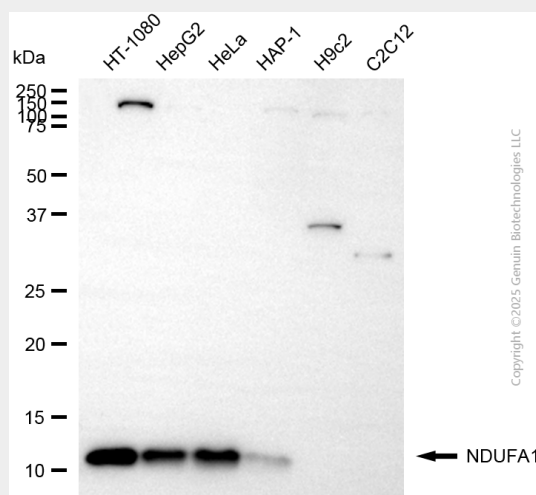
Primarily expressed in heart and skeletal muscle.

KD-Validated Anti-NDUFA1 Rabbit Monoclonal Antibody - Protocols

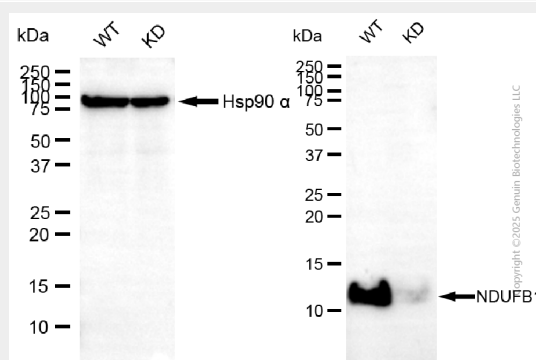
Provided below are standard protocols that you may find useful for product applications.

- [Western Blot](#)
- [Blocking Peptides](#)
- [Dot Blot](#)
- [Immunohistochemistry](#)
- [Immunofluorescence](#)
- [Immunoprecipitation](#)
- [Flow Cytometry](#)
- [Cell Culture](#)

KD-Validated Anti-NDUFA1 Rabbit Monoclonal Antibody - Images

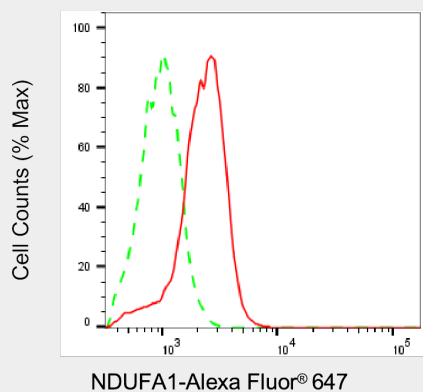


Western blotting analysis using anti-NDUFA1 antibody (Cat#64905). Total cell lysates (30 µg) from various cell lines were loaded and separated by SDS-PAGE. The blot was incubated with anti-NDUFA1 antibody (Cat#64905, 1:5,000) and HRP-conjugated goat anti-rabbit secondary antibody (Cat#201, 1:20,000) respectively. Image was developed using FeQ™ ECL Substrate Kit (Cat#226).



Western blotting analysis using anti-NDUFA1 antibody (Cat#64905). NDUFA1 expression in wild-type (WT) and NDUFA1 knockdown (KD) HSHC cells with 20 µg of total cell lysates. Hsp90 α

serves as a loading control. The blot was incubated with anti-NDUFA1 antibody (Cat#64905, 1:5,000) and HRP-conjugated goat anti-rabbit secondary antibody (Cat#201, 1:20,000) respectively. Image was developed using FeQ™ ECL Substrate Kit (Cat#226).



Flow cytometric analysis of Interferon gamma receptor 1 expression in C2C12 cells using anti-Interferon gamma receptor 1 antibody (Cat#64900, 1:1,000). Green, isotype control; red, Interferon gamma receptor 1.