

KD-Validated Anti-ARHGDIA Rabbit Monoclonal Antibody
Rabbit monoclonal antibody
Catalog # AGI2109**Specification****KD-Validated Anti-ARHGDIA Rabbit Monoclonal Antibody - Product Information**

Application	WB, FC
Primary Accession	P52565
Reactivity	Rat, Human, Mouse
Clonality	Monoclonal
Isotype	Rabbit IgG
Calculated MW	Predicted, 23 kDa, observed, 23 kDa kDa
Gene Name	ARHGDIA
Aliases	ARHGDIA; Rho GDP Dissociation Inhibitor Alpha; RHOGDI; GDIA1; Rho GDP Dissociation Inhibitor (GDI) Alpha; Rho GDP-Dissociation Inhibitor 1; GDP-Dissociation Inhibitor, Aplysia RAS-Related 1; Epididymis Secretory Sperm Binding Protein Li 47e; Rho-GDI Alpha; HEL-S-47e; Rho GDI 1; RHOGDI-1; NPHS8
Immunogen	A synthesized peptide derived from human RhoGDI

KD-Validated Anti-ARHGDIA Rabbit Monoclonal Antibody - Additional Information

Gene ID	396
Other Names	
Rho GDP-dissociation inhibitor 1, Rho GDI 1, Rho-GDI alpha, ARHGDIA, GDIA1	

KD-Validated Anti-ARHGDIA Rabbit Monoclonal Antibody - Protein Information**Name** ARHGDIA**Synonyms** GDIA1**Function**

Controls Rho proteins homeostasis. Regulates the GDP/GTP exchange reaction of the Rho proteins by inhibiting the dissociation of GDP from them, and the subsequent binding of GTP to them. Retains Rho proteins such as CDC42, RAC1 and RHOA in an inactive cytosolic pool, regulating their stability and protecting them from degradation. Actively involved in the recycling and distribution of activated Rho GTPases in the cell, mediates extraction from membranes of both inactive and activated molecules due its exceptionally high affinity for prenylated forms. Through the modulation of Rho proteins, may play a role in cell motility regulation. In glioma cells, inhibits cell migration and invasion by mediating the signals of SEMA5A and PLXNB3 that lead to inactivation of RAC1.

Cellular Location

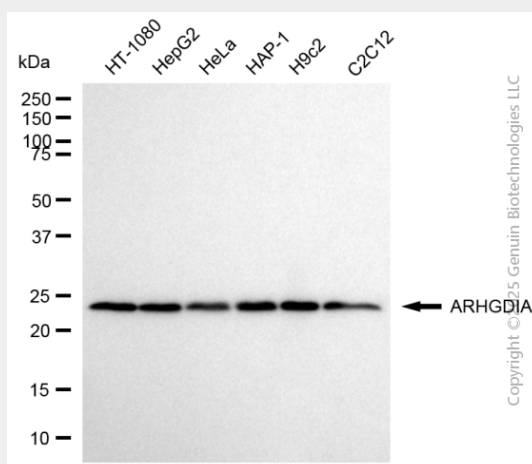
Cytoplasm.

KD-Validated Anti-ARHGDIA Rabbit Monoclonal Antibody - Protocols

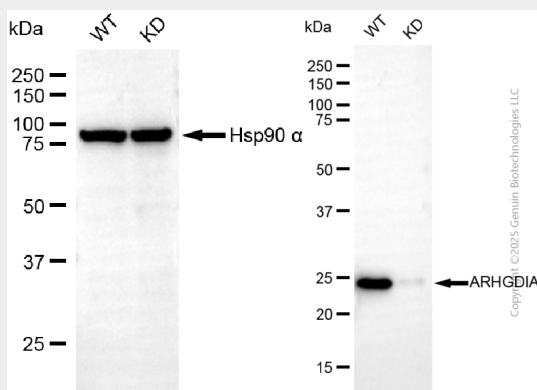
Provided below are standard protocols that you may find useful for product applications.

- [Western Blot](#)
- [Blocking Peptides](#)
- [Dot Blot](#)
- [Immunohistochemistry](#)
- [Immunofluorescence](#)
- [Immunoprecipitation](#)
- [Flow Cytometry](#)
- [Cell Culture](#)

KD-Validated Anti-ARHGDIA Rabbit Monoclonal Antibody - Images



Western blotting analysis using anti-ARHGDIA antibody (Cat#AGI2109). Total cell lysates (30 µg) from various cell lines were loaded and separated by SDS-PAGE. The blot was incubated with anti-ARHGDIA antibody (Cat#AGI2109, 1:5,000) and HRP-conjugated goat anti-rabbit secondary antibody respectively.



Western blotting analysis using anti-ARHGDIA antibody (Cat#AGI2109). ARHGDIA expression in wild-type (WT) and ARHGDIA knockdown (KD) HSHC cells with 20 µg of total cell lysates. Hsp90 α serves as a loading control. The blot was incubated with anti-ARHGDIA antibody (Cat#AGI2109,

1:5,000) and HRP-conjugated goat anti-rabbit secondary antibody respectively.