

KD-Validated Anti-Cathepsin D LC Rabbit Polyclonal Antibody
Rabbit polyclonal antibody
Catalog # AGI2120**Specification****KD-Validated Anti-Cathepsin D LC Rabbit Polyclonal Antibody - Product Information**

Application	WB
Primary Accession	P07339
Reactivity	Human
Clonality	Polyclonal
Isotype	Rabbit IgG
Calculated MW	Predicted, 45 kDa, observed, 14 kDa
Gene Name	CTSD
Aliases	CTSD; Cathepsin D; CLN10; CPSD; Ceroid-Lipofuscinosis, Neuronal 10; EC 3.4.23.5; Epididymis Secretory Sperm Binding Protein Li 130P; Cathepsin D (Lysosomal Aspartyl Protease); Lysosomal Aspartyl Peptidase; Lysosomal Aspartyl Protease; HEL-S-130P; EC 3.4.23
Immunogen	A synthesized peptide derived from human Cathepsin D LC

KD-Validated Anti-Cathepsin D LC Rabbit Polyclonal Antibody - Additional Information

Gene ID	1509
Other Names	
Cathepsin D, 3.4.23.5, Cathepsin D light chain, Cathepsin D heavy chain, CTSD, CPSD	

KD-Validated Anti-Cathepsin D LC Rabbit Polyclonal Antibody - Protein Information**Name** CTSD**Synonyms** CPSD**Function**

Acid protease active in intracellular protein breakdown. Plays a role in APP processing following cleavage and activation by ADAM30 which leads to APP degradation (PubMed:27333034). Involved in the pathogenesis of several diseases such as breast cancer and possibly Alzheimer disease.

Cellular Location

Lysosome. Melanosome. Secreted, extracellular space. Note=Identified by mass spectrometry in melanosome fractions from stage I to stage IV. In aortic samples, detected as an extracellular protein loosely bound to the matrix (PubMed:20551380)

Tissue Location

Expressed in the aorta extracellular space (at protein level) (PubMed:20551380). Expressed in

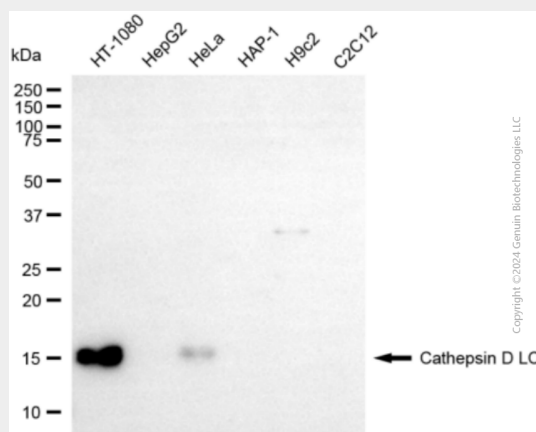
liver (at protein level) (PubMed:1426530).

KD-Validated Anti-Cathepsin D LC Rabbit Polyclonal Antibody - Protocols

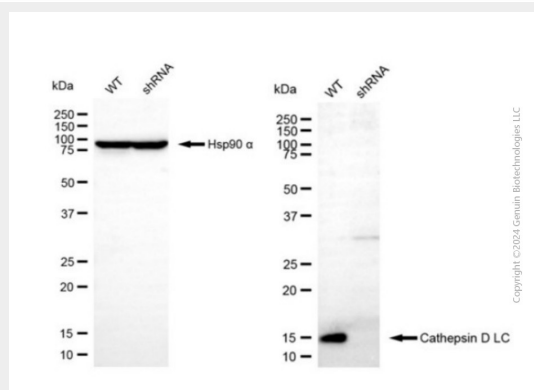
Provided below are standard protocols that you may find useful for product applications.

- [Western Blot](#)
- [Blocking Peptides](#)
- [Dot Blot](#)
- [Immunohistochemistry](#)
- [Immunofluorescence](#)
- [Immunoprecipitation](#)
- [Flow Cytometry](#)
- [Cell Culture](#)

KD-Validated Anti-Cathepsin D LC Rabbit Polyclonal Antibody - Images



Western blotting analysis using anti-cathepsin D LC antibody (Cat#AGI2120). Total cell lysates (30 µg) from various cell lines were loaded and separated by SDS-PAGE. The blot was incubated with anti-cathepsin D LC antibody (Cat#AGI2120, 1:2,500) and HRP-conjugated goat anti-rabbit secondary antibody respectively.



Western blotting analysis using anti-cathepsin D LC antibody (Cat #AGI2120). Cathepsin D LC expression in wild-type (WT) and cathepsin D LC (CTSD) shRNA knockdown (KD) HeLa cells with 30 µg of total cell lysates. Hsp90 α serves as a loading control. The blot was incubated with anti-cathepsin D LC antibody (Cat #AGI2120, 1:2,500) and HRP-conjugated goat anti-rabbit secondary antibody respectively.