

KD-Validated Anti-GYS1 Rabbit Polyclonal Antibody
Rabbit polyclonal antibody
Catalog # AGI2122**Specification**

KD-Validated Anti-GYS1 Rabbit Polyclonal Antibody - Product Information

Application	WB
Primary Accession	P13807
Reactivity	Rat, Human, Mouse
Clonality	Polyclonal
Isotype	Rabbit IgG
Calculated MW	Predicted, 84 kDa, observed, 85 kDa kDa
Gene Name	GYS1
Aliases	GYS1; Glycogen Synthase 1; GSY; GYS; Glycogen [Starch] Synthase, Muscle; Glycogen Synthase 1 (Muscle); EC 2.4.1.11
Immunogen	A synthesized peptide derived from human GYS1

KD-Validated Anti-GYS1 Rabbit Polyclonal Antibody - Additional Information

Gene ID	2997
Other Names	
Glycogen [starch] synthase, muscle, 2.4.1.11, GYS1 (http://www.genenames.org/cgi-bin/gene_symbol_report?hgnc_id=4706 " target="_blank">HGNC:4706), GYS	

KD-Validated Anti-GYS1 Rabbit Polyclonal Antibody - Protein Information**Name** GYS1 ([HGNC:4706](#))**Synonyms** GYS**Function**

Glycogen synthase participates in the glycogen biosynthetic process along with glycogenin and glycogen branching enzyme. Extends the primer composed of a few glucose units formed by glycogenin by adding new glucose units to it. In this context, glycogen synthase transfers the glycosyl residue from UDP-Glc to the non-reducing end of alpha-1,4-glucan.

Tissue Location

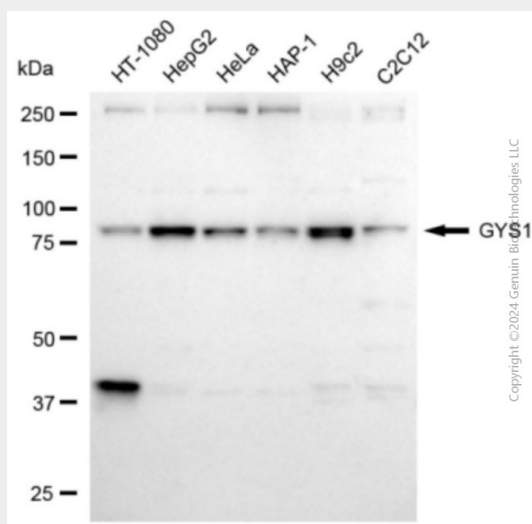
Expressed in skeletal muscle and most other cell types where glycogen is present.

KD-Validated Anti-GYS1 Rabbit Polyclonal Antibody - Protocols

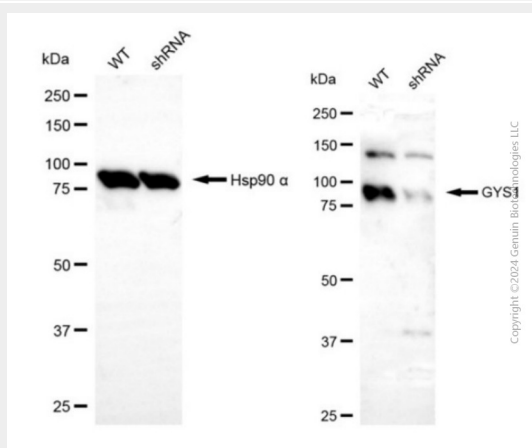
Provided below are standard protocols that you may find useful for product applications.

- [Western Blot](#)
- [Blocking Peptides](#)
- [Dot Blot](#)
- [Immunohistochemistry](#)
- [Immunofluorescence](#)
- [Immunoprecipitation](#)
- [Flow Cytometry](#)
- [Cell Culture](#)

KD-Validated Anti-GYS1 Rabbit Polyclonal Antibody - Images



Western blotting analysis using anti-GYS1 antibody (Cat#AGI2122). Total cell lysates (30 μ g) from various cell lines were loaded and separated by SDS-PAGE. The blot was incubated with anti-GYS1 antibody (Cat#AGI2122, 1:2,500) and HRP-conjugated goat anti-rabbit secondary antibody respectively.



Western blotting analysis using anti-GYS1 antibody (Cat#AGI2122). GYS1 expression in wild-type (WT) and GYS1 shRNA knockdown (KD) HeLa cells with 30 μ g of total cell lysates. β -Tubulin serves as a loading control. The blot was incubated with anti-GYS1 antibody (Cat#AGI2122, 1:2,500) and HRP-conjugated goat anti-rabbit secondary antibody respectively.