

**KD-Validated Anti-KeRatin 7 Rabbit Polyclonal Antibody**  
**Rabbit polyclonal antibody**  
**Catalog # AGI2124****Specification****KD-Validated Anti-KeRatin 7 Rabbit Polyclonal Antibody - Product Information**

Application	WB
Primary Accession	<a href="#">P08729</a>
Reactivity	Rat, Human
Clonality	Polyclonal
Isotype	Rabbit IgG
Calculated MW	Predicted, 51 kDa, observed, 40-55 kDa
Gene Name	KDa
Aliases	KRT7
	KRT7; KeRatin 7; CK-7; SCL; K7; KeRatin, Type II Cytoskeletal 7; Sarcolectin; K2C7; CK7; KeRatin, 55K Type II Cytoskeletal; Type-II KeRatin Kb7; KeRatin 7, Type II; CytokeRatin 7; KeRatin, Simple Epithelial Type I, K7; Type II Mesothelial KeRatin K7; CytokeRatin-7; KeRatin-7
Immunogen	A synthesized peptide derived from human Cytokeratin 7

**KD-Validated Anti-KeRatin 7 Rabbit Polyclonal Antibody - Additional Information**

Gene ID	3855
<b>Other Names</b>	
Keratin, type II cytoskeletal 7, Cytokeratin-7, CK-7, Keratin-7, K7, Sarcolectin, Type-II keratin Kb7, KRT7, SCL	

**KD-Validated Anti-KeRatin 7 Rabbit Polyclonal Antibody - Protein Information****Name** KRT7**Synonyms** SCL**Function**

Blocks interferon-dependent interphase and stimulates DNA synthesis in cells. Involved in the translational regulation of the human papillomavirus type 16 E7 mRNA (HPV16 E7).

**Cellular Location**

Cytoplasm.

**Tissue Location**

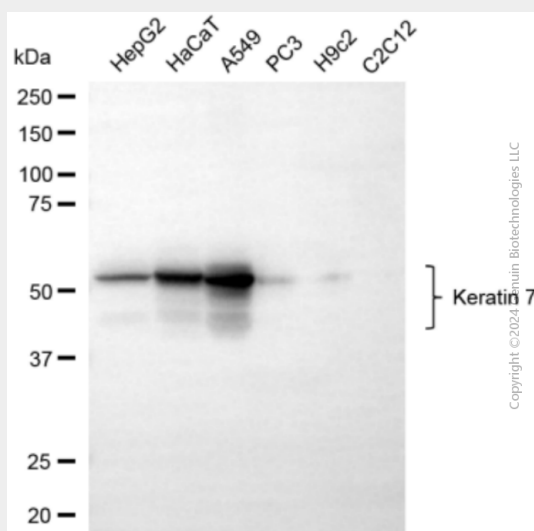
Expressed in cultured epidermal, bronchial and mesothelial cells but absent in colon, ectocervix and liver. Observed throughout the glandular cells in the junction between stomach and esophagus but is absent in the esophagus.

## KD-Validated Anti-KeRatin 7 Rabbit Polyclonal Antibody - Protocols

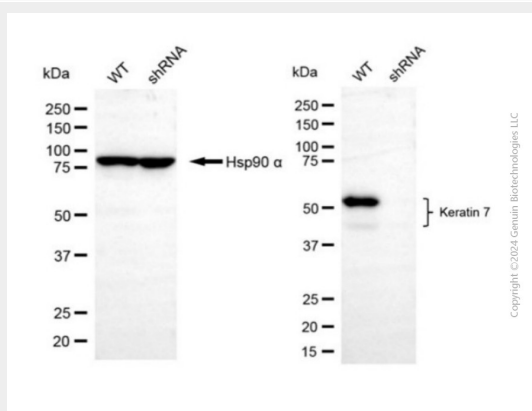
Provided below are standard protocols that you may find useful for product applications.

- [Western Blot](#)
- [Blocking Peptides](#)
- [Dot Blot](#)
- [Immunohistochemistry](#)
- [Immunofluorescence](#)
- [Immunoprecipitation](#)
- [Flow Cytometry](#)
- [Cell Culture](#)

## KD-Validated Anti-KeRatin 7 Rabbit Polyclonal Antibody - Images



Western blotting analysis using anti-keratin 7 antibody (Cat#AGI2124). Total cell lysates (30 µg) from various cell lines were loaded and separated by SDS-PAGE. The blot was incubated with anti-keratin 7 antibody (Cat#AGI2124, 1:2,500) and HRP-conjugated goat anti-rabbit secondary antibody respectively.



Western blotting analysis using anti-keratin 7 antibody (Cat #AGI2124). Keratin 7 expression in wild-type (WT) and keratin 7 (KRT7) shRNA knockdown (KD) HeLa cells with 20 µg of total cell lysates. Hsp90 α serves as a loading control. The blot was incubated with anti-keratin 7 antibody (Cat #AGI2124, 1:2,500) and HRP-conjugated goat anti-rabbit secondary antibody respectively.

