

KD-Validated Anti-KeRatin 17 Rabbit Polyclonal Antibody
Rabbit polyclonal antibody
Catalog # AGI2125**Specification****KD-Validated Anti-KeRatin 17 Rabbit Polyclonal Antibody - Product Information**

| | |
|-------------------|---|
| Application | WB |
| Primary Accession | Q04695 |
| Reactivity | Human |
| Clonality | Polyclonal |
| Isotype | Rabbit IgG |
| Calculated MW | Predicted, 48 kDa, observed, 48 kDa kDa |
| Gene Name | KRT17 |
| Aliases | KRT17; KeRatin 17; KeRatin, Type I Cytoskeletal 17; KeRatin 17, Type I; Cytokeratin-17; CK-17; PCHC1; 39.1; K17; KeRatin-17; PC2; PC |
| Immunogen | A synthesized peptide derived from human Cytokeratin 17 |

KD-Validated Anti-KeRatin 17 Rabbit Polyclonal Antibody - Additional Information

| | |
|--|------|
| Gene ID | 3872 |
| Other Names | |
| Keratin, type I cytoskeletal 17, 39.1, Cytokeratin-17, CK-17, Keratin-17, K17, KRT17 | |

KD-Validated Anti-KeRatin 17 Rabbit Polyclonal Antibody - Protein Information**Name** KRT17**Function**

Type I keratin involved in the formation and maintenance of various skin appendages, specifically in determining shape and orientation of hair (By similarity). Required for the correct growth of hair follicles, in particular for the persistence of the anagen (growth) state (By similarity). Modulates the function of TNF-alpha in the specific context of hair cycling. Regulates protein synthesis and epithelial cell growth through binding to the adapter protein SFN and by stimulating Akt/mTOR pathway (By similarity). Involved in tissue repair. May be a marker of basal cell differentiation in complex epithelia and therefore indicative of a certain type of epithelial 'stem cells'. Acts as a promoter of epithelial proliferation by acting a regulator of immune response in skin: promotes Th1/Th17-dominated immune environment contributing to the development of basaloid skin tumors (By similarity). May act as an autoantigen in the immunopathogenesis of psoriasis, with certain peptide regions being a major target for autoreactive T-cells and hence causing their proliferation.

Cellular Location

Cytoplasm {ECO:0000250|UniProtKB:Q9QWL7}.

Tissue Location

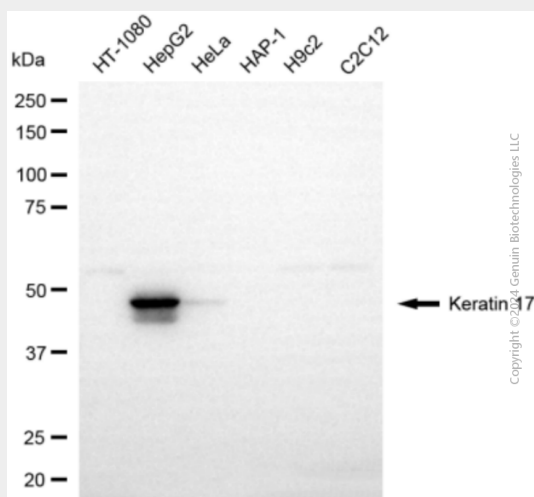
Expressed in the outer root sheath and medulla region of hair follicle specifically from eyebrow and beard, digital pulp, nail matrix and nail bed epithelium, mucosal stratified squamous epithelia and in basal cells of oral epithelium, palmoplantar epidermis and sweat and mammary glands. Also expressed in myoepithelium of prostate, basal layer of urinary bladder, cambial cells of sebaceous gland and in exocervix (at protein level)

KD-Validated Anti-KeRatin 17 Rabbit Polyclonal Antibody - Protocols

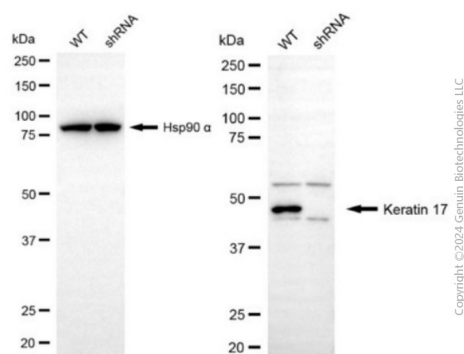
Provided below are standard protocols that you may find useful for product applications.

- [Western Blot](#)
- [Blocking Peptides](#)
- [Dot Blot](#)
- [Immunohistochemistry](#)
- [Immunofluorescence](#)
- [Immunoprecipitation](#)
- [Flow Cytometry](#)
- [Cell Culture](#)

KD-Validated Anti-KeRatin 17 Rabbit Polyclonal Antibody - Images



Western blotting analysis using anti-keratin 17 antibody (Cat#AGI2125). Total cell lysates (30 µg) from various cell lines were loaded and separated by SDS-PAGE. The blot was incubated with anti-keratin 17 antibody (Cat#AGI2125, 1:5,000) and HRP-conjugated goat anti-rabbit secondary antibody respectively.



Western blotting analysis using anti-keratin 17 antibody (Cat #AGI2125). Keratin 17 expression in wild-type (WT) and keratin 17 (KRT17) shRNA knockdown (KD) HeLa cells with 20 µg of total cell lysates. Hsp90 α serves as a loading control. The blot was incubated with anti-keratin 17 antibody (Cat #AGI2125, 1:5,000) and HRP-conjugated goat anti-rabbit secondary antibody (Cat #201, 1:20,000) respectively.