

KD-Validated Anti-PEBP1 Rabbit Polyclonal Antibody
Rabbit polyclonal antibody
Catalog # AGI2128**Specification****KD-Validated Anti-PEBP1 Rabbit Polyclonal Antibody - Product Information**

Application	WB
Primary Accession	P30086
Reactivity	Human
Clonality	Polyclonal
Isotype	Rabbit IgG
Calculated MW	Predicted, 21 kDa, observed, 20 kDa kDa
Gene Name	PEBP1
Aliases	PEBP1; Phosphatidylethanolamine Binding Protein 1; RKIP; PEBP; HCNP; PBP; Hippocampal Cholinergic Neurostimulating Peptide; Phosphatidylethanolamine-Binding Protein 1; Raf Kinase Inhibitory Protein; Raf Kinase Inhibitor Protein; Prostatic Binding Protein; Neuropeptide H3; HCNPpp; PEBP-1; Epididymis Secretory Protein Li 34; Epididymis Secretory Protein Li 96; Epididymis Luminal Protein 210; Prostatic-Binding Protein; HEL-S-34; HEL-S-96; HEL-210
Immunogen	A synthesized peptide derived from human RKIP

KD-Validated Anti-PEBP1 Rabbit Polyclonal Antibody - Additional Information

Gene ID	5037
Other Names	Phosphatidylethanolamine-binding protein 1, PEBP-1, HCNPpp, Neuropeptide h3, Prostatic-binding protein, Raf kinase inhibitor protein, RKIP, Hippocampal cholinergic neurostimulating peptide, HCNP, PEBP1, PBP, PEBP

KD-Validated Anti-PEBP1 Rabbit Polyclonal Antibody - Protein Information**Name** PEBP1**Synonyms** PBP, PEBP**Function**

Binds ATP, opioids and phosphatidylethanolamine. Has lower affinity for phosphatidylinositol and phosphatidylcholine. Serine protease inhibitor which inhibits thrombin, neuropsin and chymotrypsin but not trypsin, tissue type plasminogen activator and elastase (By similarity). Inhibits the kinase activity of RAF1 by inhibiting its activation and by dissociating the RAF1/MEK

complex and acting as a competitive inhibitor of MEK phosphorylation.

Cellular Location

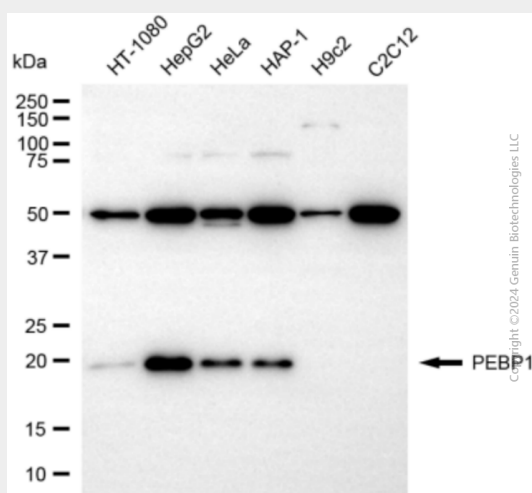
Cytoplasm.

KD-Validated Anti-PEBP1 Rabbit Polyclonal Antibody - Protocols

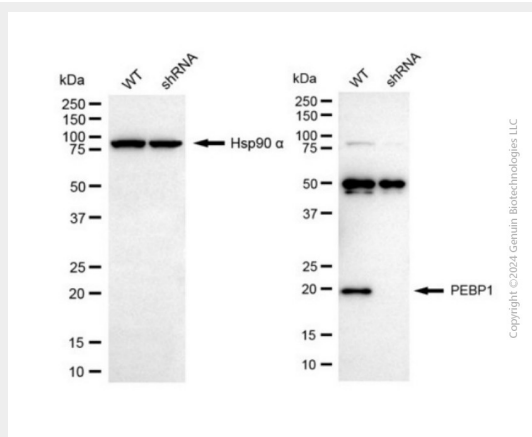
Provided below are standard protocols that you may find useful for product applications.

- [Western Blot](#)
- [Blocking Peptides](#)
- [Dot Blot](#)
- [Immunohistochemistry](#)
- [Immunofluorescence](#)
- [Immunoprecipitation](#)
- [Flow Cytometry](#)
- [Cell Culture](#)

KD-Validated Anti-PEBP1 Rabbit Polyclonal Antibody - Images



Western blotting analysis using anti-PEBP1 antibody (Cat#AGI2128). Total cell lysates (30 µg) from various cell lines were loaded and separated by SDS-PAGE. The blot was incubated with anti-PEBP1 antibody (Cat#AGI2128, 1:1,000) and HRP-conjugated goat anti-rabbit secondary antibody respectively.



Western blotting analysis using anti-PEBP1 antibody (Cat #AGI2128). PEBP1 expression in wild-type (WT) and PEBP1 shRNA knockdown (KD) HeLa cells with 20 µg of total cell lysates. Hsp90 α serves as a loading control. The blot was incubated with anti-PEBP1 antibody (Cat #AGI2128, 1:1,000) and HRP-conjugated goat anti-rabbit secondary antibody (Cat #201, 1:20,000) respectively.