

KD-Validated Anti-ACACA Rabbit Polyclonal Antibody
Rabbit polyclonal antibody
Catalog # AGI2142**Specification****KD-Validated Anti-ACACA Rabbit Polyclonal Antibody - Product Information**

Application	WB
Primary Accession	Q13085
Reactivity	Rat, Human, Mouse
Clonality	Polyclonal
Isotype	Rabbit IgG
Calculated MW	Predicted, 266 kDa, observed, 250 kDa
Gene Name	KDa
Aliases	ACACA ACACA; Acetyl-CoA Carboxylase Alpha; ACC-Alpha; ACC1; ACCA; Acetyl-Coenzyme A Carboxylase Alpha; Acetyl-CoA Carboxylase 1; ACACalpha; ACCalpha; Acac1; HACCC1; ACAC; ACC; EC 6.4.1.2; ACACAD
Immunogen	A synthesized peptide derived from human ACC alpha

KD-Validated Anti-ACACA Rabbit Polyclonal Antibody - Additional Information

Gene ID	31
Other Names	
Acetyl-CoA carboxylase 1, ACC1, 6.4.1.2, Acetyl-Coenzyme A carboxylase alpha, ACC-alpha, ACACA (HGNC:84), ACAC, ACC1, ACCA	

KD-Validated Anti-ACACA Rabbit Polyclonal Antibody - Protein Information**Name** ACACA ([HGNC:84](#))**Synonyms** ACAC, ACC1, ACCA**Function**

Cytosolic enzyme that catalyzes the carboxylation of acetyl- CoA to malonyl-CoA, the first and rate-limiting step of de novo fatty acid biosynthesis (PubMed:[20457939](http://www.uniprot.org/citations/20457939), PubMed:[20952656](http://www.uniprot.org/citations/20952656), PubMed:[29899443](http://www.uniprot.org/citations/29899443)). This is a 2 steps reaction starting with the ATP-dependent carboxylation of the biotin carried by the biotin carboxyl carrier (BCC) domain followed by the transfer of the carboxyl group from carboxylated biotin to acetyl-CoA (PubMed:[20457939](http://www.uniprot.org/citations/20457939), PubMed:[20952656](http://www.uniprot.org/citations/20952656), PubMed:[29899443](http://www.uniprot.org/citations/29899443))

target="_blank">29899443).

Cellular Location

Cytoplasm, cytosol {ECO:0000250|UniProtKB:Q5SWU9}

Tissue Location

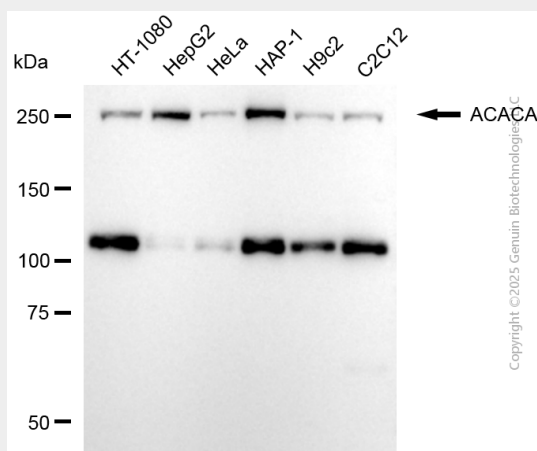
Expressed in brain, placenta, skeletal muscle, renal, pancreatic and adipose tissues; expressed at low level in pulmonary tissue; not detected in the liver

KD-Validated Anti-ACACA Rabbit Polyclonal Antibody - Protocols

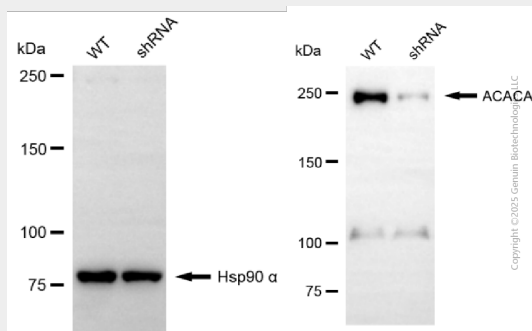
Provided below are standard protocols that you may find useful for product applications.

- [Western Blot](#)
- [Blocking Peptides](#)
- [Dot Blot](#)
- [Immunohistochemistry](#)
- [Immunofluorescence](#)
- [Immunoprecipitation](#)
- [Flow Cytometry](#)
- [Cell Culture](#)

KD-Validated Anti-ACACA Rabbit Polyclonal Antibody - Images



Western blotting analysis using anti-ACACA antibody (Cat#AGI2142). Total cell lysates (30 µg) from various cell lines were loaded and separated by SDS-PAGE. The blot was incubated with anti-ACACA antibody (Cat#AGI2142, 1:2,500) and HRP-conjugated goat anti-rabbit secondary antibody respectively.



Western blotting analysis using anti-ACACA antibody (Cat#AGI2142). ACACA expression in wild-type (WT) and ACACA shRNA knockdown (KD) HeLa cells with 20 µg of total cell lysates. Hsp90 α serves as a loading control. The blot was incubated with anti-ACACA antibody (Cat#AGI2142, 1:2,500) and HRP-conjugated goat anti-rabbit secondary antibody respectively.