

**KD-Validated Anti-EEF2 Rabbit Polyclonal Antibody**  
**Rabbit polyclonal antibody**  
**Catalog # AGI2145****Specification****KD-Validated Anti-EEF2 Rabbit Polyclonal Antibody - Product Information**

Application	WB
Primary Accession	<a href="#">P13639</a>
Reactivity	Rat, Human, Mouse
Clonality	Polyclonal
Isotype	Rabbit IgG
Calculated MW	Predicted, 95 kDa, observed, 95 kDa kDa
Gene Name	EEF2
Aliases	EEF2; Eukaryotic Translation Elongation Factor 2; EEF-2; EF2; Polypeptidyl-TRNA Translocase; Elongation Factor 2; EF-2; Epididymis Secretory Sperm Binding Protein; C 3.6.5.-; SCA26
Immunogen	A synthesized peptide derived from human EEF2

**KD-Validated Anti-EEF2 Rabbit Polyclonal Antibody - Additional Information**

Gene ID	1938
<b>Other Names</b>	
Elongation factor 2, EF-2, 3.6.5.-, EEF2, EF2	

**KD-Validated Anti-EEF2 Rabbit Polyclonal Antibody - Protein Information****Name** EEF2**Synonyms** EF2**Function**

Catalyzes the GTP-dependent ribosomal translocation step during translation elongation (PubMed: [26593721](http://www.uniprot.org/citations/26593721)). During this step, the ribosome changes from the pre-translocational (PRE) to the post-translocational (POST) state as the newly formed A-site-bound peptidyl- tRNA and P-site-bound deacylated tRNA move to the P and E sites, respectively (PubMed: [26593721](http://www.uniprot.org/citations/26593721)). Catalyzes the coordinated movement of the two tRNA molecules, the mRNA and conformational changes in the ribosome (PubMed: [26593721](http://www.uniprot.org/citations/26593721)).

**Cellular Location**

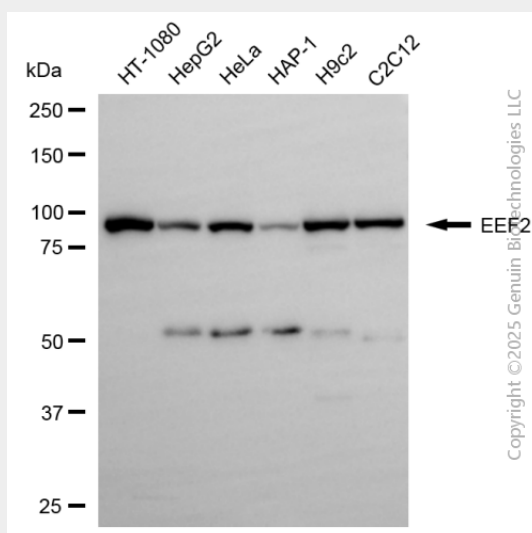
Cytoplasm. Nucleus. Note=Phosphorylation by CSK promotes cleavage and SUMOylation-dependent nuclear translocation of the C- terminal cleavage product.

## KD-Validated Anti-EEF2 Rabbit Polyclonal Antibody - Protocols

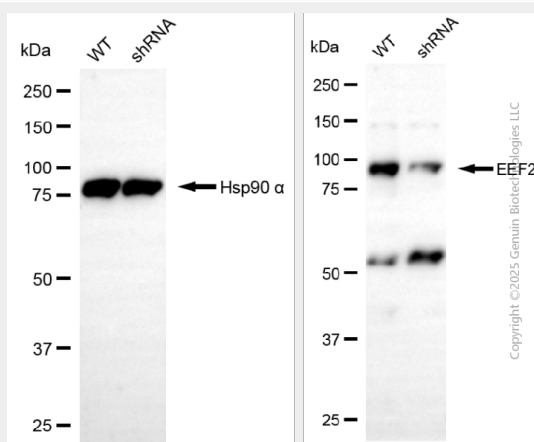
Provided below are standard protocols that you may find useful for product applications.

- [Western Blot](#)
- [Blocking Peptides](#)
- [Dot Blot](#)
- [Immunohistochemistry](#)
- [Immunofluorescence](#)
- [Immunoprecipitation](#)
- [Flow Cytometry](#)
- [Cell Culture](#)

## KD-Validated Anti-EEF2 Rabbit Polyclonal Antibody - Images



Western blotting analysis using anti-EEF2 antibody (Cat#AGI2145). Total cell lysates (30 µg) from various cell lines were loaded and separated by SDS-PAGE. The blot was incubated with anti-EEF2 antibody (Cat#AGI2145, 1:2,500) and HRP-conjugated goat anti-rabbit secondary antibody respectively.



Western blotting analysis using anti-EEF2 antibody (Cat#AGI2145). EEF2 expression in wild-type (WT) and EEF2 shRNA knockdown (KD) HeLa cells with 20 µg of total cell lysates. Hsp90 α serves as a loading control. The blot was incubated with anti-EEF2 antibody (Cat#AGI2145, 1:2,500) and

HRP-conjugated goat anti-rabbit secondary antibody respectively.