

## KD-Validated Anti-CLIC4 Rabbit Polyclonal Antibody

### Rabbit polyclonal antibody

Catalog # AGI2147

### Specification

### KD-Validated Anti-CLIC4 Rabbit Polyclonal Antibody - Product Information

Application	WB
Primary Accession	<a href="#">Q9Y696</a>
Reactivity	Rat, Human, Mouse
Clonality	Polyclonal
Isotype	Rabbit IgG
Calculated MW	Predicted, 29 kDa, observed, 28 kDa kDa
Gene Name	CLIC4
Aliases	CLIC4; Chloride Intracellular Channel 4; CLIC4L; P64H1; HuH1; H1; Intracellular Chloride Ion Channel Protein P64H1; Chloride Intracellular Channel Protein 4; Glutaredoxin-Like Oxidoreductase CLIC4; DKFZP566G223; Epididymis Secretory Sperm Binding Protein; Chloride Intracellular Channel 4 Like; EC 1.8.-.-; MTCLIC
Immunogen	A synthesized peptide derived from human CLIC4

### KD-Validated Anti-CLIC4 Rabbit Polyclonal Antibody - Additional Information

Gene ID	25932
<b>Other Names</b>	
Chloride intracellular channel protein 4, Glutaredoxin-like oxidoreductase CLIC4, 1.8.-.-, Intracellular chloride ion channel protein p64H1, CLIC4 {ECO:0000303 PubMed:12163372, ECO:0000312 HGNC:HGNC:13518}	

### KD-Validated Anti-CLIC4 Rabbit Polyclonal Antibody - Protein Information

**Name** CLIC4 {ECO:0000303|PubMed:12163372, ECO:0000312|HGNC:HGNC:13518}

#### Function

In the soluble state, catalyzes glutaredoxin-like thiol disulfide exchange reactions with reduced glutathione as electron donor (PubMed:<a href="http://www.uniprot.org/citations/25581026" target="\_blank">25581026</a>, PubMed:<a href="http://www.uniprot.org/citations/37759794" target="\_blank">37759794</a>). Can insert into membranes and form voltage-dependent multi-ion conductive channels. Membrane insertion seems to be redox-regulated and may occur only under oxidizing conditions (By similarity) (PubMed:<a href="http://www.uniprot.org/citations/16176272" target="\_blank">16176272</a>). Has alternate cellular functions like a potential role in angiogenesis or in maintaining apical-basolateral membrane polarity during mitosis and cytokinesis. Could also promote endothelial cell proliferation and regulate endothelial morphogenesis (tubulogenesis). Promotes cell-surface

expression of HRH3.

#### Cellular Location

Cytoplasm, cytoskeleton, microtubule organizing center, centrosome. Cytoplasmic vesicle membrane; Single-pass membrane protein. Nucleus. Cell membrane; Single-pass membrane protein. Mitochondrion {ECO:0000250|UniProtKB:Q9Z0W7}. Cell junction. Endoplasmic reticulum membrane {ECO:0000250|UniProtKB:Q9Z0W7}; Single-pass membrane protein {ECO:0000250|UniProtKB:Q9Z0W7}. Note=Colocalized with AKAP9 at the centrosome and midbody. Exists both as soluble cytoplasmic protein and as membrane protein with probably a single transmembrane domain Present in an intracellular vesicular compartment that likely represent trans-Golgi network vesicles. Might not be present in the nucleus of cardiac cells. {ECO:0000250|UniProtKB:Q9Z0W7, ECO:0000269|PubMed:14569596}

#### Tissue Location

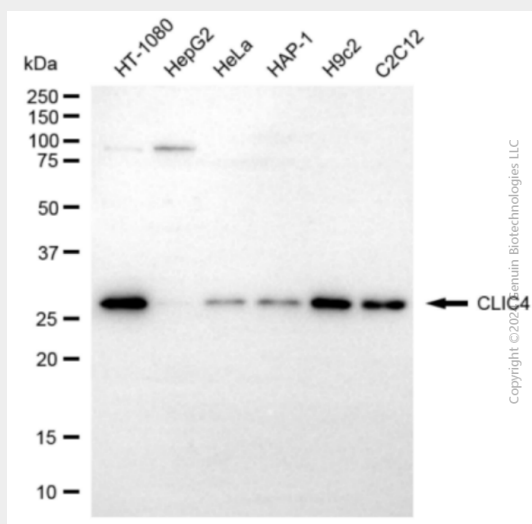
Detected in epithelial cells from colon, esophagus and kidney (at protein level). Expression is prominent in heart, kidney, placenta and skeletal muscle.

### KD-Validated Anti-CLIC4 Rabbit Polyclonal Antibody - Protocols

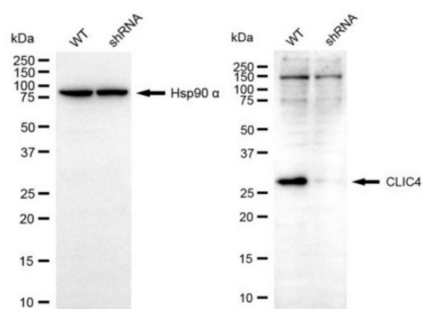
Provided below are standard protocols that you may find useful for product applications.

- [Western Blot](#)
- [Blocking Peptides](#)
- [Dot Blot](#)
- [Immunohistochemistry](#)
- [Immunofluorescence](#)
- [Immunoprecipitation](#)
- [Flow Cytometry](#)
- [Cell Culture](#)

### KD-Validated Anti-CLIC4 Rabbit Polyclonal Antibody - Images



Western blotting analysis using anti-CLIC4 antibody (Cat#64993). Total cell lysates (30 µg) from various cell lines were loaded and separated by SDS-PAGE. The blot was incubated with anti-CLIC4 antibody (Cat#64993, 1:2,500) and HRP-conjugated goat anti-rabbit secondary antibody (Cat#201, 1:20,000) respectively. Image was developed using FeQ™ ECL Substrate Kit (Cat#226).



Copyright ©2024 Genium Biotechnologies LLC

Western blotting analysis using anti-CLIC4 antibody (Cat #64993). CLIC4 expression in wild-type (WT) and CLIC4 shRNA knockdown (KD) HeLa cells with 30 µg of total cell lysates. Hsp90 α serves as a loading control. The blot was incubated with anti-CLIC4 antibody (Cat #64993, 1:1,000) and HRP-conjugated goat anti-rabbit secondary antibody (Cat #201, 1:20,000) respectively. Image was developed using FeQ™ ECL Substrate Kit (Cat #226).