

KD-Validated Anti-Annexin A5 Rabbit Polyclonal Antibody
Rabbit polyclonal antibody
Catalog # AGI2148**Specification****KD-Validated Anti-Annexin A5 Rabbit Polyclonal Antibody - Product Information**

Application	WB
Primary Accession	P08758
Reactivity	Rat, Human, Mouse
Clonality	Polyclonal
Isotype	Rabbit IgG
Calculated MW	Predicted, 36 kDa, observed, 31 kDa kDa
Gene Name	ANXA5
Aliases	ANXA5; Annexin A5; CPB-I; PAP-I; Placental Anticoagulant Protein I; Vascular Anticoagulant-Alpha; Calphobindin I; Endonexin II; Annexin V; VAC-Alpha; RPRGL3; ANX5; ENX2; Placental Anticoagulant Protein 4; Thromboplastin Inhibitor; Anchorin CII; Lipocortin V; VAC-Alpha; Annexin-5; PP4; Epididymis Secretory Protein Li 7; HEL-S-7; CBP-I
Immunogen	A synthesized peptide derived from human Annexin A5

KD-Validated Anti-Annexin A5 Rabbit Polyclonal Antibody - Additional Information

Gene ID 308

Other Names

Annexin A5, Anchorin CII, Annexin V, Annexin-5, Calphobindin I, CPB-I, Endonexin II, Lipocortin V, Placental anticoagulant protein 4, PP4, Placental anticoagulant protein I, PAP-I, Thromboplastin inhibitor, Vascular anticoagulant-alpha, VAC-alpha, ANXA5, ANX5, ENX2, PP4

KD-Validated Anti-Annexin A5 Rabbit Polyclonal Antibody - Protein Information**Name** ANXA5**Synonyms** ANX5, ENX2, PP4**Function**

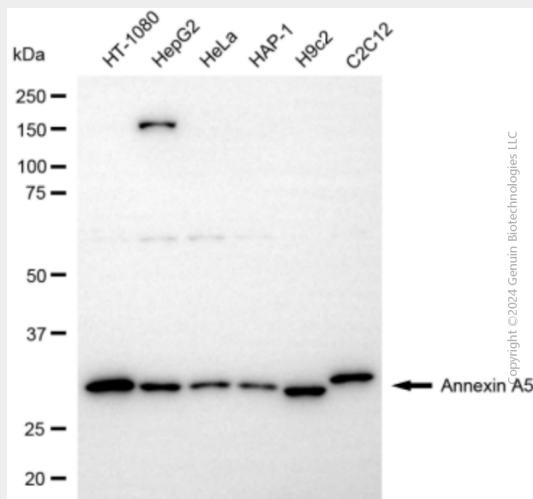
This protein is an anticoagulant protein that acts as an indirect inhibitor of the thromboplastin-specific complex, which is involved in the blood coagulation cascade.

KD-Validated Anti-Annexin A5 Rabbit Polyclonal Antibody - Protocols

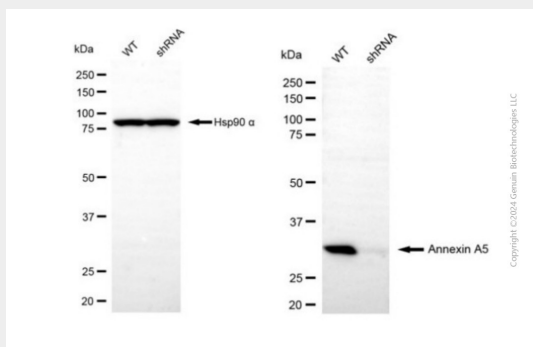
Provided below are standard protocols that you may find useful for product applications.

- [Western Blot](#)
- [Blocking Peptides](#)
- [Dot Blot](#)
- [Immunohistochemistry](#)
- [Immunofluorescence](#)
- [Immunoprecipitation](#)
- [Flow Cytometry](#)
- [Cell Culture](#)

KD-Validated Anti-Annexin A5 Rabbit Polyclonal Antibody - Images



Western blotting analysis using anti-annexin A5 antibody (Cat#AGI2148). Total cell lysates (20 µg) from various cell lines were loaded and separated by SDS-PAGE. The blot was incubated with anti-annexin A5 antibody (Cat#AGI2148, 1:2,500) and HRP-conjugated goat anti-rabbit secondary antibody respectively.



Western blotting analysis using anti-annexin A5 antibody (Cat #AGI2148). Annexin A5 expression in wild-type (WT) and annexin A5 (ANXA5) shRNA knockdown (KD) HeLa cells with 20 µg of total cell lysates. Hsp90 α serves as a loading control. The blot was incubated with anti-annexin A5 antibody (Cat #AGI2148, 1:2,500) and HRP-conjugated goat anti-rabbit secondary antibody respectively.