

KD-Validated Anti-CYFIP1 Rabbit Polyclonal Antibody
Rabbit polyclonal antibody
Catalog # AGI2149**Specification****KD-Validated Anti-CYFIP1 Rabbit Polyclonal Antibody - Product Information**

Application	WB
Primary Accession	Q7L576
Reactivity	Rat, Human, Mouse
Clonality	Polyclonal
Isotype	Rabbit IgG
Calculated MW	Predicted, 145 kDa, observed, 149 kDa
Gene Name	KDa
Aliases	CYFIP1
	CYFIP1; Cytoplasmic FMR1 Interacting Protein 1; P140SRA-1; KIAA0068; SHYC; Cytoplasmic FMRP Interacting Protein 1; Cytoplasmic FMR1-Interacting Protein 1; Specifically Rac1-Associated Protein 1; Selective Hybridizing Clone; P140sra-1; SRA-1; Sra-1; SRA1
Immunogen	A synthesized peptide derived from human CYFIP1

KD-Validated Anti-CYFIP1 Rabbit Polyclonal Antibody - Additional Information

Gene ID	23191
Other Names	
Cytoplasmic FMR1-interacting protein 1, Specifically Rac1-associated protein 1, Sra-1, p140sra-1, CYFIP1 (http://www.genenames.org/cgi-bin/gene_symbol_report?hgnc_id=13759) HGNC:13759	

KD-Validated Anti-CYFIP1 Rabbit Polyclonal Antibody - Protein Information**Name** CYFIP1 ([HGNC:13759](#))**Function**

Component of the CYFIP1-EIF4E-FMR1 complex which binds to the mRNA cap and mediates translational repression. In the CYFIP1-EIF4E-FMR1 complex this subunit is an adapter between EIF4E and FMR1. Promotes the translation repression activity of FMR1 in brain probably by mediating its association with EIF4E and mRNA (By similarity). Regulates formation of membrane ruffles and lamellipodia. Plays a role in axon outgrowth. Binds to F-actin but not to RNA. Part of the WAVE complex that regulates actin filament reorganization via its interaction with the Arp2/3 complex. Actin remodeling activity is regulated by RAC1. Regulator of epithelial morphogenesis. As component of the WAVE1 complex, required for BDNF-NTRK2 endocytic trafficking and signaling from early endosomes (By similarity). May act as an invasion suppressor in cancers.

Cellular Location

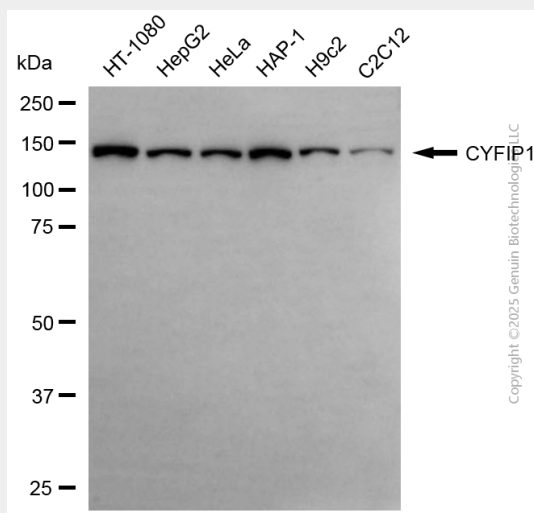
Cytoplasm {ECO:0000250|UniProtKB:Q7TMB8}. Cytoplasm, perinuclear region {ECO:0000250|UniProtKB:Q7TMB8}. Cell projection, lamellipodium {ECO:0000250|UniProtKB:Q7TMB8}. Cell projection, ruffle {ECO:0000250|UniProtKB:Q7TMB8}. Synapse, synaptosome {ECO:0000250|UniProtKB:Q7TMB8}. Note=Highly expressed in the perinuclear region (By similarity). Enriched in synaptosomes (By similarity). Also enriched in membrane ruffles and at the tips of lamellipodia (By similarity). {ECO:0000250|UniProtKB:Q7TMB8}

KD-Validated Anti-CYFIP1 Rabbit Polyclonal Antibody - Protocols

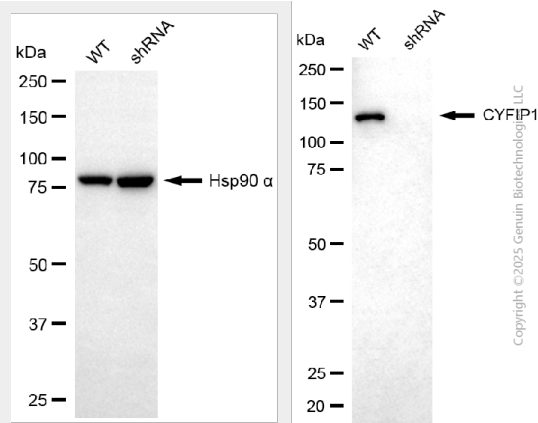
Provided below are standard protocols that you may find useful for product applications.

- [Western Blot](#)
- [Blocking Peptides](#)
- [Dot Blot](#)
- [Immunohistochemistry](#)
- [Immunofluorescence](#)
- [Immunoprecipitation](#)
- [Flow Cytometry](#)
- [Cell Culture](#)

KD-Validated Anti-CYFIP1 Rabbit Polyclonal Antibody - Images



Western blotting analysis using anti-CYFIP1 antibody (Cat#AGI2149). Total cell lysates (30 µg) from various cell lines were loaded and separated by SDS-PAGE. The blot was incubated with anti-CYFIP1 antibody (Cat#AGI2149, 1:2,500) and HRP-conjugated goat anti-rabbit secondary antibody respectively.



Western blotting analysis using anti-CYFIP1 antibody (Cat#AGI2149). CYFIP1 expression in wild-type (WT) and CYFIP1 shRNA knockdown (KD) HeLa cells with 30 µg of total cell lysates. Hsp90 α serves as a loading control. The blot was incubated with anti-CYFIP1 antibody (Cat#AGI2149, 1:2,500) and HRP-conjugated goat anti-rabbit secondary antibody respectively.