

KD-Validated Anti-MMAB Mouse Monoclonal Antibody
Mouse monoclonal Antibody
Catalog # AGI2160**Specification****KD-Validated Anti-MMAB Mouse Monoclonal Antibody - Product Information**

Application	WB
Primary Accession	Q96EY8
Reactivity	Human
Clonality	Monoclonal
Isotype	Mouse IgG2a
Calculated MW	Predicted, 27 kDa, observed, 23 kDa kDa
Gene Name	MMAB
Aliases	MMAB; Metabolism Of Cobalamin Associated B; CFAP23; CblB; Methylmalonic Aciduria (Cobalamin Deficiency) CblB Type; ATP:Co(I)Rrinoid Adenosyltransferase MMAB; Cilia And Flagella Associated Protein 23; Methylmalonic Aciduria Type B Protein; ATP:Cob(I)Alamin Adenosyltransferase; Corrinoid Adenosyltransferase MMAB; Cob(II)Yrinic Acid A,C-Diamide Adenosyltransferase, Mitochondrial; Methylmalonic Aciduria (Cobalamin Deficiency) Type B; Cob(II)Yrinic Acid A,C-Diamide Adenosyltransferase; Aquocob(I)Alamin Vitamin B12s Adenosyltransferase; Cobinamide/Cobalamin Adenosyltransferase; ATP:Corrinoid Adenosyltransferase; Cob(II)Alamin Adenosyltransferase; Corrinoid Adenosyltransferase; EC 2.5.1.-; ATR; Cob Recombinant protein of human MMAB
Immunogen	

KD-Validated Anti-MMAB Mouse Monoclonal Antibody - Additional Information

Gene ID	326625
Other Names	
Corrinoid adenosyltransferase MMAB, 2.5.1.-, ATP:co(I)rrinoid adenosyltransferase MMAB, Methylmalonic aciduria type B protein, MMAB (HGNC:19331)	

KD-Validated Anti-MMAB Mouse Monoclonal Antibody - Protein Information**Name** MMAB ([HGNC:19331](#))

Function

Converts cob(I)alamin to adenosylcobalamin (adenosylcob(III)alamin), a coenzyme for methylmalonyl-CoA mutase, therefore participates in the final step of the vitamin B12 conversion (PubMed:12514191). Generates adenosylcobalamin (AdoCbl) and directly delivers the cofactor to MUT in a transfer that is stimulated by ATP- binding to MMAB and gated by MMAA (Probable).

Cellular Location

Mitochondrion.

Tissue Location

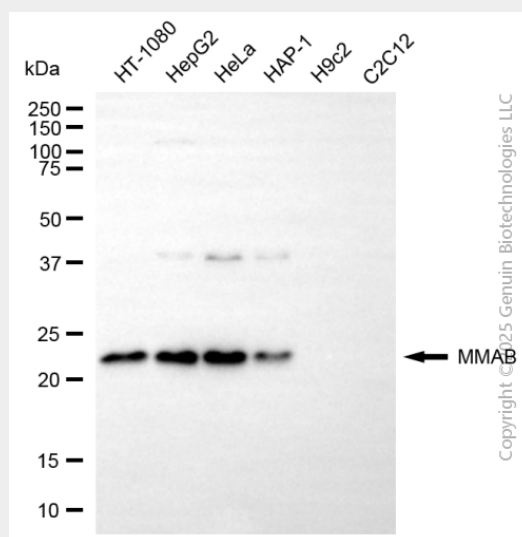
Expressed in liver and skeletal muscle.

KD-Validated Anti-MMAB Mouse Monoclonal Antibody - Protocols

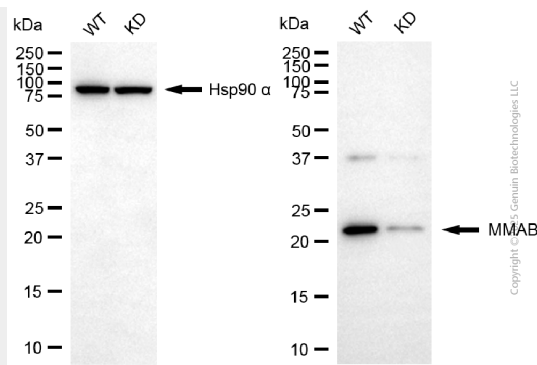
Provided below are standard protocols that you may find useful for product applications.

- [Western Blot](#)
- [Blocking Peptides](#)
- [Dot Blot](#)
- [Immunohistochemistry](#)
- [Immunofluorescence](#)
- [Immunoprecipitation](#)
- [Flow Cytometry](#)
- [Cell Culture](#)

KD-Validated Anti-MMAB Mouse Monoclonal Antibody - Images



Western blotting analysis using anti-MMAB antibody (Cat#AGI2160). Total cell lysates (30 µg) from various cell lines were loaded and separated by SDS-PAGE. The blot was incubated with anti-MMAB antibody (Cat#AGI2160, 1:2,500) and HRP-conjugated goat anti-mouse secondary antibody respectively.



Western blotting analysis using anti-MMAB antibody (Cat#AGI2160). MMAB expression in wild-type (WT) and MMAB knockdown (KD) HSHC cells with 20 µg of total cell lysates. Hsp90 α serves as a loading control. The blot was incubated with anti-MMAB antibody (Cat#AGI2160, 1:2,500) and HRP-conjugated goat anti-mouse secondary antibody respectively.