

**KD-Validated Anti-RDH14 Mouse Monoclonal Antibody**  
**Mouse monoclonal Antibody**  
**Catalog # AGI2162****Specification**

---

**KD-Validated Anti-RDH14 Mouse Monoclonal Antibody - Product Information**

Application	WB
Primary Accession	<a href="#">Q9HBH5</a>
Reactivity	Rat, Human, Mouse
Clonality	Monoclonal
Isotype	Mouse IgG1
Calculated MW	Predicted, 37 kDa, observed, 33 kDa kDa
Gene Name	RDH14
Aliases	RDH14; Retinol Dehydrogenase 14; SDR7C4; PAN2; Short Chain Dehydrogenase/Reductase Family 7C Member 4; Retinol Dehydrogenase 14 (All-Trans/9-Cis/11-Cis); Retinol Dehydrogenase 14 (All-Trans And 9-Cis); Alcohol Dehydrogenase PAN2; Short Chain Dehydrogenase/Reductase Family 7C, Member 4; Pancreas Protein 2; EC 1.1.1.300
Immunogen	Recombinant protein of human RDH14

**KD-Validated Anti-RDH14 Mouse Monoclonal Antibody - Additional Information**

Gene ID	57665
<b>Other Names</b>	
Retinol dehydrogenase 14, 1.1.1.300, Alcohol dehydrogenase PAN2, Short chain dehydrogenase/reductase family 7C member 4, RDH14, PAN2, SDR7C4	

**KD-Validated Anti-RDH14 Mouse Monoclonal Antibody - Protein Information****Name** RDH14**Synonyms** PAN2, SDR7C4**Function**

Retinol dehydrogenase with a clear preference for NADP. Displays high activity towards 9-cis, 11-cis and all-trans-retinol. Shows a very weak activity towards 13-cis-retinol. Has no activity towards steroid.

**Tissue Location**

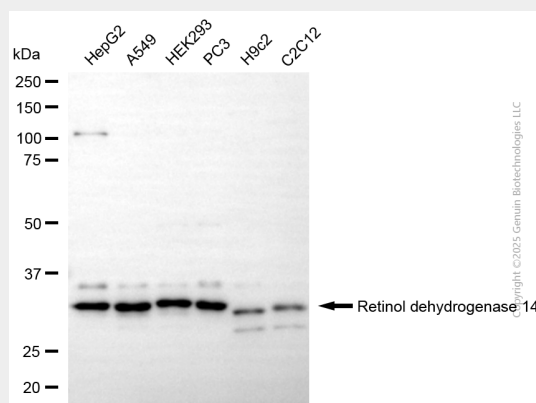
Widely expressed..

## KD-Validated Anti-RDH14 Mouse Monoclonal Antibody - Protocols

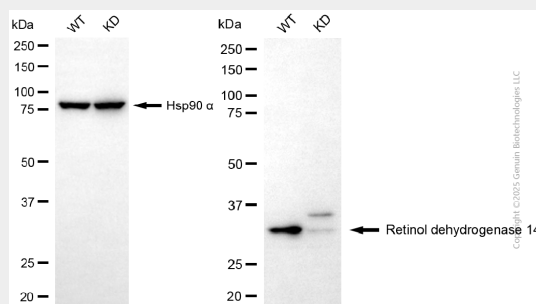
Provided below are standard protocols that you may find useful for product applications.

- [Western Blot](#)
- [Blocking Peptides](#)
- [Dot Blot](#)
- [Immunohistochemistry](#)
- [Immunofluorescence](#)
- [Immunoprecipitation](#)
- [Flow Cytometry](#)
- [Cell Culture](#)

## KD-Validated Anti-RDH14 Mouse Monoclonal Antibody - Images



Western blotting analysis using anti-retinol dehydrogenase 14 antibody (Cat#AGI2162). Total cell lysates (30 µg) from various cell lines were loaded and separated by SDS-PAGE. The blot was incubated with anti-retinol dehydrogenase 14 antibody (Cat#AGI2162, 1:500) and HRP-conjugated goat anti-mouse secondary antibody respectively.



Western blotting analysis using anti-retinol dehydrogenase 14 antibody (Cat#AGI2162). Retinol dehydrogenase 14 expression in wild-type (WT) and retinol dehydrogenase 14 (RDH14) knockdown (KD) HT-1080 cells with 30 µg of total cell lysates. Hsp90 α serves as a loading control. The blot was incubated with anti-retinol dehydrogenase 14 antibody (Cat#AGI2162, 1:1,000) and HRP-conjugated goat anti-mouse secondary antibody respectively.