

KD-Validated Anti-MAPRE2 Mouse Monoclonal Antibody
Mouse monoclonal Antibody
Catalog # AGI2163**Specification****KD-Validated Anti-MAPRE2 Mouse Monoclonal Antibody - Product Information**

Application	WB
Primary Accession	Q15555
Reactivity	Rat, Human, Mouse
Clonality	Monoclonal
Isotype	Mouse IgG2a
Calculated MW	Predicted, 37 kDa, observed, 37 kDa kDa
Gene Name	MAPRE2
Aliases	MAPRE2; Microtubule Associated Protein RP/EB Family Member 2; RP1; EB2; EB1; Microtubule-Associated Protein RP/EB Family Member 2; APC-Binding Protein EB1; APC-Binding Protein EB2; End-Binding Protein 2; T-Cell Activation Protein, EB1 Family; CSCSC2
Immunogen	Recombinant protein of human MAPRE2

KD-Validated Anti-MAPRE2 Mouse Monoclonal Antibody - Additional Information

Gene ID	10982
Other Names	
Microtubule-associated protein RP/EB family member 2, APC-binding protein EB2, End-binding protein 2, EB2, MAPRE2, RP1	

KD-Validated Anti-MAPRE2 Mouse Monoclonal Antibody - Protein Information**Name** MAPRE2**Synonyms** RP1**Function**

Adapter protein that is involved in microtubule polymerization, and spindle function by stabilizing microtubules and anchoring them at centrosomes. Therefore, ensures mitotic progression and genome stability (PubMed: [27030108](http://www.uniprot.org/citations/27030108)). Acts as a central regulator of microtubule reorganization in apico-basal epithelial differentiation (By similarity). Plays a role during oocyte meiosis by regulating microtubule dynamics (By similarity). Participates in neurite growth by interacting with plexin B3/PLXNB3 and microtubule reorganization during apico-basal epithelial differentiation (PubMed: [22373814](http://www.uniprot.org/citations/22373814)). Also plays an essential role for cell migration and focal adhesion dynamics. Mechanistically, recruits HAX1 to microtubules in order to regulate focal adhesion dynamics (PubMed: [26527684](http://www.uniprot.org/citations/26527684)).

Cellular Location

Cytoplasm, cytoskeleton. Note=Associated with the microtubule network. Accumulates at the plus end of microtubules

Tissue Location

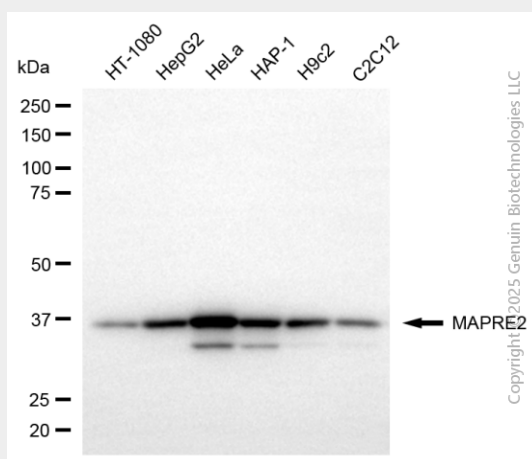
Expressed in different tumor cell lines. Up- regulated in activated B- and T-lymphocytes

KD-Validated Anti-MAPRE2 Mouse Monoclonal Antibody - Protocols

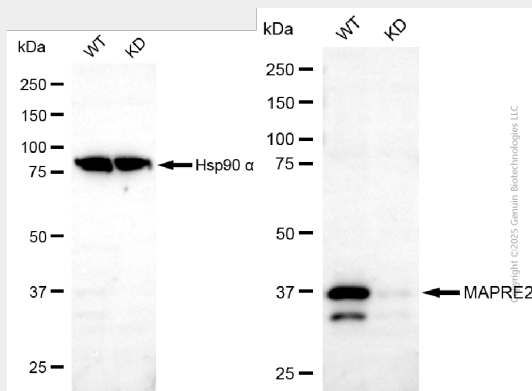
Provided below are standard protocols that you may find useful for product applications.

- [Western Blot](#)
- [Blocking Peptides](#)
- [Dot Blot](#)
- [Immunohistochemistry](#)
- [Immunofluorescence](#)
- [Immunoprecipitation](#)
- [Flow Cytometry](#)
- [Cell Culture](#)

KD-Validated Anti-MAPRE2 Mouse Monoclonal Antibody - Images



Western blotting analysis using anti-MAPRE2 antibody (Cat#AGI2163). Total cell lysates (30 µg) from various cell lines were loaded and separated by SDS-PAGE. The blot was incubated with anti-MAPRE2 antibody (Cat#AGI2163, 1:2,500) and HRP-conjugated goat anti-mouse secondary antibody respectively.



Western blotting analysis using anti-MAPRE2 antibody (Cat#AGI2163). MAPRE2 expression in wild-type (WT) and MAPRE2 knockdown (KD) HeLa cells with 20 µg of total cell lysates. Hsp90 α serves as a loading control. The blot was incubated with anti-MAPRE2 antibody (Cat#AGI2163, 1:2,500) and HRP-conjugated goat anti-mouse secondary antibody respectively.