

KD-Validated Anti-PPM1B Mouse Monoclonal Antibody
Mouse monoclonal Antibody
Catalog # AGI2164**Specification****KD-Validated Anti-PPM1B Mouse Monoclonal Antibody - Product Information**

Application	WB
Primary Accession	O75688
Reactivity	Rat, Human, Mouse
Clonality	Monoclonal
Isotype	Mouse IgG1
Calculated MW	Predicted, 53 kDa, observed, 39,53 kDa
Gene Name	KDa
Aliases	PPM1B PPM1B; Protein Phosphatase, Mg ²⁺ /Mn ²⁺ Dependent 1B; PP2CB; PPC2BETAX; PP2CBETA; Protein Phosphatase 1B; EC 3.1.3.16; PP2C-Beta; Protein Phosphatase 1B (Formerly 2C), Magnesium-Dependent, Beta Isoform; Protein Phosphatase, Mg ²⁺ /Mn ²⁺ Dependent, 1B; Protein Phosphatase 2C, Beta Isoform; Protein Phosphatase 2C-Like Protein; Protein Phosphatase 2C Isoform Beta; PP2C-Beta-X
Immunogen	Recombinant protein of human PPM1B

KD-Validated Anti-PPM1B Mouse Monoclonal Antibody - Additional Information

Gene ID	5495
Other Names	
Protein phosphatase 1B, 3.1.3.16, Protein phosphatase 2C isoform beta, PP2C-beta, PPM1B, PP2CB	

KD-Validated Anti-PPM1B Mouse Monoclonal Antibody - Protein Information**Name** PPM1B**Synonyms** PP2CB**Function**

Enzyme with a broad specificity. Dephosphorylates CDK2 and CDK6 in vitro. Dephosphorylates PRKAA1 and PRKAA2. Inhibits TBK1- mediated antiviral signaling by dephosphorylating it at 'Ser-172'. Plays an important role in the termination of TNF-alpha-mediated NF- kappa-B activation through dephosphorylating and inactivating IKBKB/IKKB.

Cellular Location

Cytoplasm, cytosol. Membrane {ECO:0000250|UniProtKB:P36993}; Lipid-anchor {ECO:0000250|UniProtKB:P36993}. Note=Weakly associates at the membrane and N-myristoylation mediates the membrane localization {ECO:0000250|UniProtKB:P36993}

Tissue Location

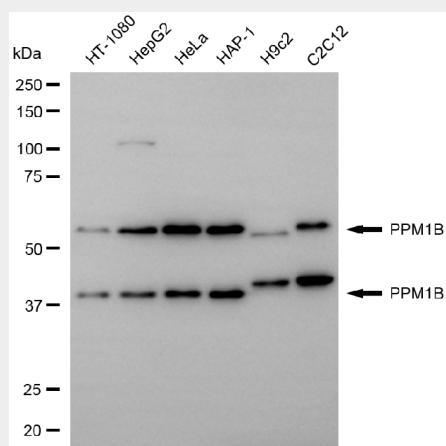
Highly expressed in heart and skeletal muscle.

KD-Validated Anti-PPM1B Mouse Monoclonal Antibody - Protocols

Provided below are standard protocols that you may find useful for product applications.

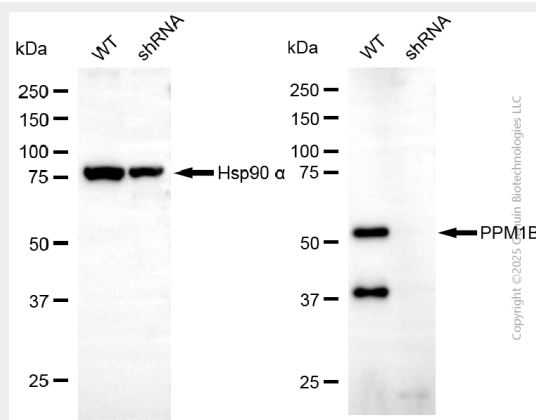
- [Western Blot](#)
- [Blocking Peptides](#)
- [Dot Blot](#)
- [Immunohistochemistry](#)
- [Immunofluorescence](#)
- [Immunoprecipitation](#)
- [Flow Cytometry](#)
- [Cell Culture](#)

KD-Validated Anti-PPM1B Mouse Monoclonal Antibody - Images



Copyright ©2025 Genulin Biotechnologies LLC

Western blotting analysis using anti-PPM1B antibody (Cat#AGI2164). Total cell lysates (30 µg) from various cell lines were loaded and separated by SDS-PAGE. The blot was incubated with anti-PPM1B antibody (Cat#AGI2164, 1:2,500) and HRP-conjugated goat anti-mouse secondary antibody respectively.



Copyright ©2025 Genulin Biotechnologies LLC

Western blotting analysis using anti-PPM1B antibody (Cat#AGI2164). PPM1B expression in wild-type (WT) and PPM1B shRNA knockdown (KD) HeLa cells with 20 µg of total cell lysates. Hsp90 α serves as a loading control. The blot was incubated with anti-PPM1B antibody.

(Cat#AGI2164, 1:2,500) and HRP-conjugated goat anti-mouse secondary antibody respectively.