

**KD-Validated Anti-SELENBP1 Mouse Monoclonal Antibody**  
**Mouse monoclonal Antibody**  
**Catalog # AGI2167****Specification****KD-Validated Anti-SELENBP1 Mouse Monoclonal Antibody - Product Information**

Application	WB
Primary Accession	<a href="#">Q13228</a>
Reactivity	Human
Clonality	Monoclonal
Isotype	Mouse IgG2a
Calculated MW	Predicted, 52 kDa, observed, 50 kDa kDa
Gene Name	SELENBP1
Aliases	SELENBP1; Selenium Binding Protein 1; Methanethiol Oxidase; HSBP; LPSB; 56 kDa Selenium-Binding Protein; HSP56; SBP56; SP56; MTO; Epididymis Secretory Sperm Binding Protein Li 134P; Selenium-Binding Protein 1; HEL-S-134P; EC 1.8.3.4; EHMT0; SBP
Immunogen	Recombinant protein of human SELENBP1

**KD-Validated Anti-SELENBP1 Mouse Monoclonal Antibody - Additional Information**

Gene ID	8991
<b>Other Names</b>	
Methanethiol oxidase, MTO, 1.8.3.4, 56 kDa selenium-binding protein, SBP56, SP56, Selenium-binding protein 1, SELENBP1, SBP	

**KD-Validated Anti-SELENBP1 Mouse Monoclonal Antibody - Protein Information****Name** SELENBP1**Synonyms** SBP**Function**

Catalyzes the oxidation of methanethiol, an organosulfur compound known to be produced in substantial amounts by gut bacteria (PubMed:<a href="http://www.uniprot.org/citations/29255262" target="\_blank">29255262</a>). Selenium-binding protein which may be involved in the sensing of reactive xenobiotics in the cytoplasm. May be involved in intra-Golgi protein transport (By similarity).

**Cellular Location**

Nucleus. Cytoplasm, cytosol Membrane {ECO:0000250|UniProtKB:Q8VIF7}; Peripheral membrane protein {ECO:0000250|UniProtKB:Q8VIF7}. Note=May associate with Golgi membrane (By similarity). May associate with the membrane of autophagosomes (By similarity). {ECO:0000250|UniProtKB:Q8VIF7}

### Tissue Location

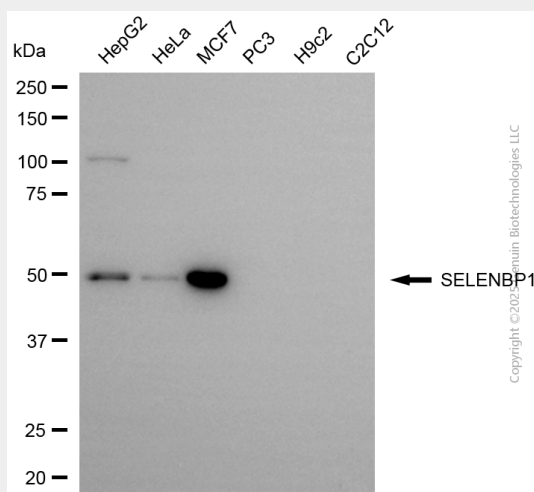
Widely expressed. Highly expressed in liver, lung, colon, prostate, kidney and pancreas. In brain, present both in neurons and glia (at protein level). Down-regulated in lung adenocarcinoma, colorectal carcinoma and ovarian cancer. Two-fold up-regulated in brain and blood from schizophrenia patients.

### KD-Validated Anti-SELENBP1 Mouse Monoclonal Antibody - Protocols

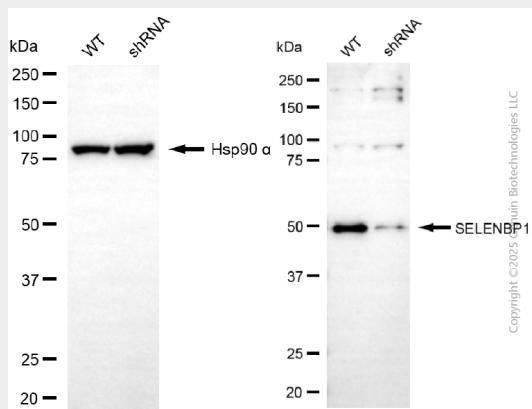
Provided below are standard protocols that you may find useful for product applications.

- [Western Blot](#)
- [Blocking Peptides](#)
- [Dot Blot](#)
- [Immunohistochemistry](#)
- [Immunofluorescence](#)
- [Immunoprecipitation](#)
- [Flow Cytometry](#)
- [Cell Culture](#)

### KD-Validated Anti-SELENBP1 Mouse Monoclonal Antibody - Images



Western blotting analysis using anti-SELENBP1 antibody (Cat#AGI2167). Total cell lysates (30 µg) from various cell lines were loaded and separated by SDS-PAGE. The blot was incubated with anti-SELENBP1 antibody (Cat#AGI2167, 1:2,500) and HRP-conjugated goat anti-mouse secondary antibody respectively.



Western blotting analysis using anti-SELENBP1 antibody (Cat#AGI2167). SELENBP1 expression in wild-type (WT) and SELENBP1 shRNA knockdown (KD) HeLa cells with 20 µg of total cell lysates. Hsp90 α serves as a loading control. The blot was incubated with anti-SELENBP1 antibody (Cat#AGI2167, 1:2,500) and HRP-conjugated goat anti-mouse secondary antibody respectively.