

**KD-Validated Anti-Phosphoglucomutase 3 Mouse Monoclonal Antibody**  
**Mouse monoclonal Antibody**  
**Catalog # AGI2168****Specification****KD-Validated Anti-Phosphoglucomutase 3 Mouse Monoclonal Antibody - Product Information**

Application	WB
Primary Accession	<a href="#">O95394</a>
Reactivity	Human
Clonality	Monoclonal
Isotype	Mouse IgG1
Calculated MW	Predicted, 60 kDa, observed, 70 kDa kDa
Gene Name	PGM3
Aliases	PGM3; Phosphoglucomutase 3; AGM1; PAGM; Acetylglucosamine Phosphomutase; Phosphoacetylglucosamine Mutase; DKFZP434B187; EC 5.4.2.3; PGM 3; N-Acetylglucosamine-Phosphate Mutase 1; N-Acetylglucosamine-Phosphate Mutase; Phosphoglucomutase-3; EC 5.4.2; IMD23
Immunogen	Recombinant protein of human PGM3

**KD-Validated Anti-Phosphoglucomutase 3 Mouse Monoclonal Antibody - Additional Information**

Gene ID 5238

**Other Names**

Phosphoacetylglucosamine mutase, PAGM, 5.4.2.3, Acetylglucosamine phosphomutase, N-acetylglucosamine-phosphate mutase, Phosphoglucomutase-3 {ECO:0000312|HGNC:HGNC:8907}, PGM 3, PGM3 ([http://www.genenames.org/cgi-bin/gene\\_symbol\\_report?hgnc\\_id=8907](http://www.genenames.org/cgi-bin/gene_symbol_report?hgnc_id=8907))

**KD-Validated Anti-Phosphoglucomutase 3 Mouse Monoclonal Antibody - Protein Information****Name** PGM3 ([HGNC:8907](#))**Function**

Catalyzes the conversion of GlcNAc-6-P into GlcNAc-1-P during the synthesis of uridine diphosphate/UDP-GlcNAc, a sugar nucleotide critical to multiple glycosylation pathways including protein N- and O- glycosylation.

**Tissue Location**

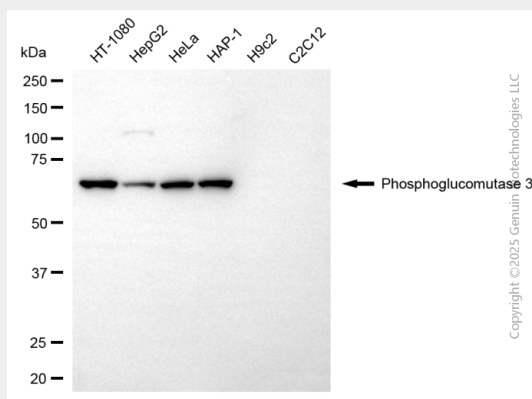
Found in many tissues except lung. Relatively high expression in pancreas, heart, liver, and placenta, and relatively low expression in brain, skeletal muscle and kidney

## KD-Validated Anti-Phosphoglucomutase 3 Mouse Monoclonal Antibody - Protocols

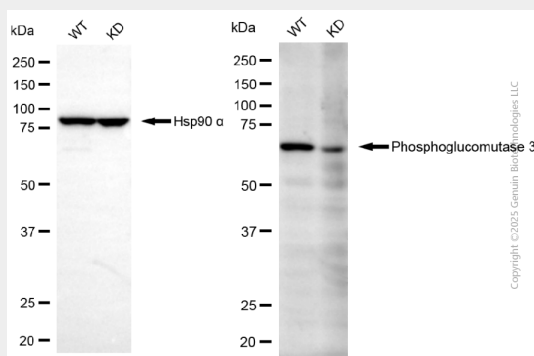
Provided below are standard protocols that you may find useful for product applications.

- [Western Blot](#)
- [Blocking Peptides](#)
- [Dot Blot](#)
- [Immunohistochemistry](#)
- [Immunofluorescence](#)
- [Immunoprecipitation](#)
- [Flow Cytometry](#)
- [Cell Culture](#)

## KD-Validated Anti-Phosphoglucomutase 3 Mouse Monoclonal Antibody - Images



Western blotting analysis using anti-phosphoglucomutase 3 antibody (Cat#AGI2168). Total cell lysates (30 µg) from various cell lines were loaded and separated by SDS-PAGE. The blot was incubated with anti-phosphoglucomutase 3 antibody (Cat#AGI2168, 1:2,500) and HRP-conjugated goat anti-mouse secondary antibody respectively.



Western blotting analysis using anti-phosphoglucomutase 3 antibody (Cat#AGI2168). Phosphoglucomutase 3 expression in wild-type (WT) and phosphoglucomutase 3 (PGM3) knockdown (KD) HSHC cells with 20 µg of total cell lysates. Hsp90 α serves as a loading control. The blot was incubated with anti-phosphoglucomutase 3 antibody (Cat#AGI2168, 1:2,500) and HRP-conjugated goat anti-mouse secondary antibody respectively.