

**KD-Validated Anti-PHGDH Mouse Monoclonal Antibody**  
**Mouse monoclonal Antibody**  
**Catalog # AGI2171****Specification****KD-Validated Anti-PHGDH Mouse Monoclonal Antibody - Product Information**

Application	WB
Primary Accession	<a href="#">O43175</a>
Reactivity	Rat, Human, Mouse
Clonality	Monoclonal
Isotype	Mouse IgG2a
Calculated MW	Predicted, 57 kDa, observed, 57 kDa kDa
Gene Name	PHGDH
Aliases	PHGDH; Phosphoglycerate Dehydrogenase; D-3-Phosphoglycerate Dehydrogenase; SERA; GDH; PDG; 2-Oxoglutarate Reductase; Malate Dehydrogenase; EC 1.1.1.95; 3-PGDH; Epididymis Secretory Protein Li 113; 3-Phosphoglycerate Dehydrogenase; EC 1.1.1.399; EC 1.1.1.37; HEL-S-113; EC 1.1.1.1; PHGDHD; 3PGDH; PGDH3; NLS1; PGAD; NLS; PGD
Immunogen	Recombinant protein of human PHGDH

**KD-Validated Anti-PHGDH Mouse Monoclonal Antibody - Additional Information**

Gene ID	26227
<b>Other Names</b>	D-3-phosphoglycerate dehydrogenase, 3-PGDH, 1.1.1.95, 2-oxoglutarate reductase, 1.1.1.399, Malate dehydrogenase, 1.1.1.37, PHGDH, PGDH3

**KD-Validated Anti-PHGDH Mouse Monoclonal Antibody - Protein Information****Name** PHGDH**Synonyms** PGDH3**Function**

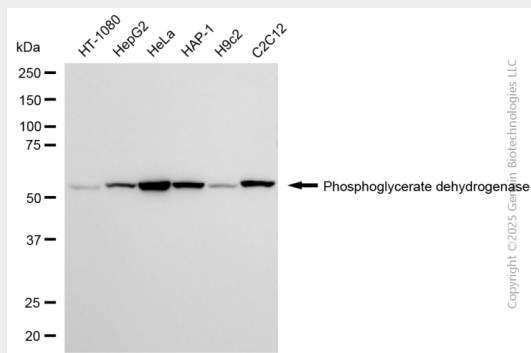
Catalyzes the reversible oxidation of 3-phospho-D-glycerate to 3-phosphonooxypyruvate, the first step of the phosphorylated L- serine biosynthesis pathway. Also catalyzes the reversible oxidation of 2-hydroxyglutarate to 2-oxoglutarate and the reversible oxidation of (S)-malate to oxaloacetate.

**KD-Validated Anti-PHGDH Mouse Monoclonal Antibody - Protocols**

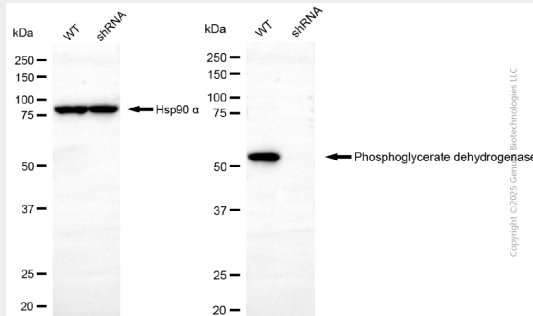
Provided below are standard protocols that you may find useful for product applications.

- [Western Blot](#)
- [Blocking Peptides](#)
- [Dot Blot](#)
- [Immunohistochemistry](#)
- [Immunofluorescence](#)
- [Immunoprecipitation](#)
- [Flow Cytometry](#)
- [Cell Culture](#)

## KD-Validated Anti-PHGDH Mouse Monoclonal Antibody - Images



Western blotting analysis using anti-phosphoglycerate dehydrogenase antibody (Cat#AGI2171). Total cell lysates (30 µg) from various cell lines were loaded and separated by SDS-PAGE. The blot was incubated with anti-phosphoglycerate dehydrogenase antibody (Cat#AGI2171, 1:2,500) and HRP-conjugated goat anti-mouse secondary antibody respectively.



Western blotting analysis using anti-phosphoglycerate dehydrogenase antibody (Cat#AGI2171). Phosphoglycerate dehydrogenase (PHGDH) shRNA knockdown (KD) HeLa cells with 20 µg of total cell lysates. Hsp90 α serves as a loading control. The blot was incubated with anti-phosphoglycerate dehydrogenase antibody (Cat#AGI2171, 1:2,500) and HRP-conjugated goat anti-mouse secondary antibody respectively.