

**KD-Validated Anti-PDCL3 Mouse Monoclonal Antibody**  
**Mouse monoclonal Antibody**  
**Catalog # AGI2173****Specification****KD-Validated Anti-PDCL3 Mouse Monoclonal Antibody - Product Information**

Application	WB
Primary Accession	<a href="#">Q9H2J4</a>
Reactivity	Human
Clonality	Monoclonal
Isotype	Mouse IgG2a
Calculated MW	Predicted, 28 kDa, observed, 35 kDa
Gene Name	KDa PDCL3
Aliases	PDCL3; Phosducin Like 3; VIAF1; Viral IAP-Associated Factor 1; Phosducin-Like Protein 3; HTPHLP; VIAF-1; PhPL3; IAP-Associated Factor VIAF1; PHLP2A; PhLP2A; PHLP3; VIAF
Immunogen	Recombinant protein of human PDCL3

**KD-Validated Anti-PDCL3 Mouse Monoclonal Antibody - Additional Information**

Gene ID	79031
<b>Other Names</b>	
Phosducin-like protein 3, HTPHLP, PhPL3, Viral IAP-associated factor 1, VIAF-1, PDCL3, PhLP2A, VIAF1	

**KD-Validated Anti-PDCL3 Mouse Monoclonal Antibody - Protein Information****Name** PDCL3**Synonyms** PhLP2A, VIAF1**Function**

Acts as a chaperone for the angiogenic VEGF receptor KDR/VEGFR2, increasing its abundance by inhibiting its ubiquitination and degradation (PubMed:<a href="http://www.uniprot.org/citations/23792958" target="\_blank">23792958</a>, PubMed:<a href="http://www.uniprot.org/citations/26059764" target="\_blank">26059764</a>). Inhibits the folding activity of the chaperonin-containing T-complex (CCT) which leads to inhibition of cytoskeletal actin folding (PubMed:<a href="http://www.uniprot.org/citations/17429077" target="\_blank">17429077</a>). Acts as a chaperone during heat shock alongside HSP90 and HSP40/70 chaperone complexes (By similarity). Modulates the activation of caspases during apoptosis (PubMed:<a href="http://www.uniprot.org/citations/15371430" target="\_blank">15371430</a>).

**Cellular Location**

Cytoplasm. Cytoplasm, perinuclear region. Endoplasmic reticulum

### Tissue Location

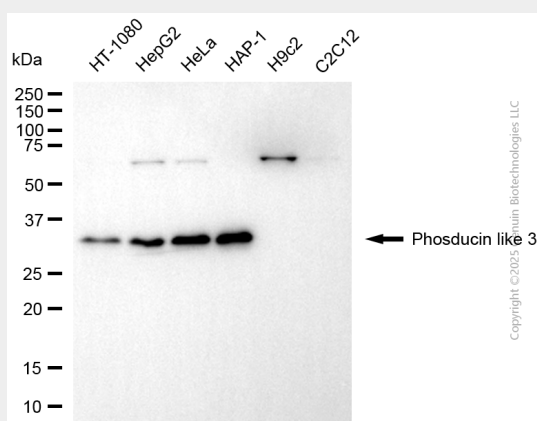
Expressed in endothelial cells (at protein level) (PubMed:26059764). Expressed in all tissues examined including spleen, thymus, prostate, testis, ovary, small intestine and colon (PubMed:15371430).

### KD-Validated Anti-PDCL3 Mouse Monoclonal Antibody - Protocols

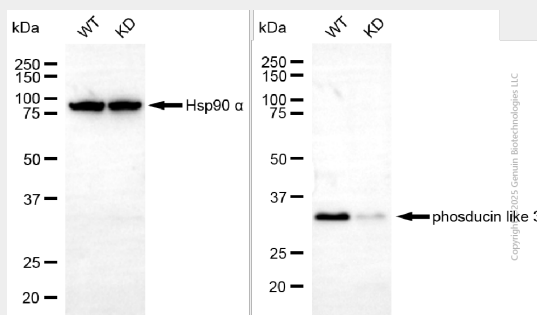
Provided below are standard protocols that you may find useful for product applications.

- [Western Blot](#)
- [Blocking Peptides](#)
- [Dot Blot](#)
- [Immunohistochemistry](#)
- [Immunofluorescence](#)
- [Immunoprecipitation](#)
- [Flow Cytometry](#)
- [Cell Culture](#)

### KD-Validated Anti-PDCL3 Mouse Monoclonal Antibody - Images



Western blotting analysis using anti-phosducin like 3 antibody (Cat#AGI2173). Total cell lysates (30 µg) from various cell lines were loaded and separated by SDS-PAGE. The blot was incubated with anti-phosducin like 3 antibody (Cat#AGI2173, 1:2,500) and HRP-conjugated goat anti-mouse secondary antibody respectively.



Western blotting analysis using anti-phosducin like 3 antibody (Cat#AGI2173). Phosducin like 3 expression in wild-type (WT) and phosducin like 3 (PDCL3) knockdown (KD) 293T cells with 20 µg of total cell lysates. Hsp90 α serves as a loading control. The blot was incubated with anti-phosducin like 3 antibody (Cat#AGI2173, 1:1,000) and HRP-conjugated goat anti-mouse secondary antibody respectively.