

**KD-Validated Anti-HNRNPH1 Mouse Monoclonal Antibody**  
**Mouse monoclonal Antibody**  
**Catalog # AGI2174****Specification**

---

**KD-Validated Anti-HNRNPH1 Mouse Monoclonal Antibody - Product Information**

Application	WB
Primary Accession	<a href="#">P31943</a>
Reactivity	Rat, Human, Mouse
Clonality	Monoclonal
Isotype	Mouse IgG1
Calculated MW	Predicted, 49 kDa, observed, 49 kDa kDa
Gene Name	HNRNPH1
Aliases	HNRNPH1; Heterogeneous Nuclear Ribonucleoprotein H1; Heterogeneous Nuclear Ribonucleoprotein H; HnRNPH; HNRPH1; Heterogeneous Nuclear Ribonucleoprotein H1 (H); HNRPH; Epididymis Secretory Sperm Binding Protein; HnRNP H; NEDCDS
Immunogen	Recombinant protein of human HNRNPH1

**KD-Validated Anti-HNRNPH1 Mouse Monoclonal Antibody - Additional Information**Gene ID **3187****Other Names**

Heterogeneous nuclear ribonucleoprotein H, hnRNP H, Heterogeneous nuclear ribonucleoprotein H, N-terminally processed, HNRNPH1, HNRPH, HNRPH1

**KD-Validated Anti-HNRNPH1 Mouse Monoclonal Antibody - Protein Information****Name** HNRNPH1**Synonyms** HNRPH, HNRPH1**Function**

This protein is a component of the heterogeneous nuclear ribonucleoprotein (hnRNP) complexes which provide the substrate for the processing events that pre-mRNAs undergo before becoming functional, translatable mRNAs in the cytoplasm. Mediates pre-mRNA alternative splicing regulation. Inhibits, together with CUGBP1, insulin receptor (IR) pre-mRNA exon 11 inclusion in myoblast. Binds to the IR RNA. Binds poly(RG).

**Cellular Location**

Nucleus, nucleoplasm.

**Tissue Location**

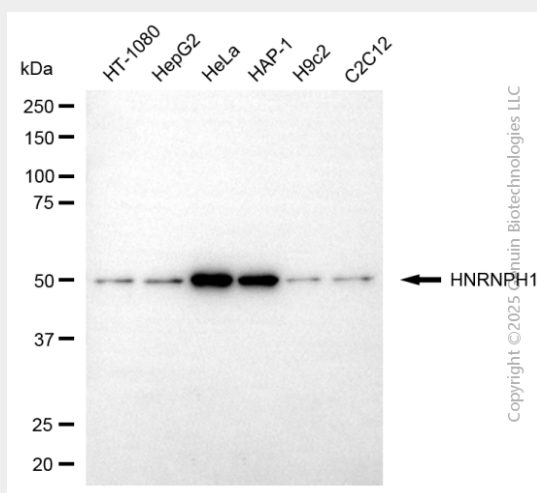
Expressed ubiquitously.

## KD-Validated Anti-HNRNPH1 Mouse Monoclonal Antibody - Protocols

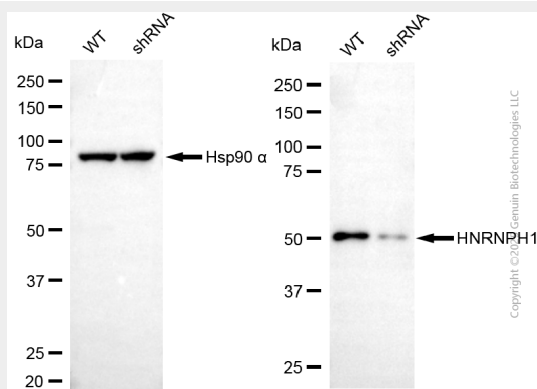
Provided below are standard protocols that you may find useful for product applications.

- [Western Blot](#)
- [Blocking Peptides](#)
- [Dot Blot](#)
- [Immunohistochemistry](#)
- [Immunofluorescence](#)
- [Immunoprecipitation](#)
- [Flow Cytometry](#)
- [Cell Culture](#)

## KD-Validated Anti-HNRNPH1 Mouse Monoclonal Antibody - Images



Western blotting analysis using anti-HNRNPH1 antibody (Cat#AGI2174). Total cell lysates (30 µg) from various cell lines were loaded and separated by SDS-PAGE. The blot was incubated with anti-HNRNPH1 antibody (Cat#AGI2174, 1:2,500) and HRP-conjugated goat anti-mouse secondary antibody respectively.



Western blotting analysis using anti-HNRNPH1 antibody (Cat#AGI2174). HNRNPH1 expression in wild-type (WT) and HNRNPH1 shRNA knockdown (KD) HeLa cells with 30 µg of total cell lysates. Hsp90 α serves as a loading control. The blot was incubated with anti-HNRNPH1 antibody (Cat#AGI2174, 1:2,500) and HRP-conjugated goat anti-mouse secondary antibody respectively.