

KD-Validated Anti-ASRGL1 Mouse Monoclonal Antibody
Mouse monoclonal antibody
Catalog # AGI2181**Specification****KD-Validated Anti-ASRGL1 Mouse Monoclonal Antibody - Product Information**

Application	WB, FC
Primary Accession	Q7L266
Reactivity	Human
Clonality	Monoclonal
Isotype	Mouse IgG2a
Calculated MW	Predicted, 32 kDa, observed, 40 kDa kDa
Gene Name	ASRGL1
Aliases	ASRGL1; Asparaginase And Isoaspartyl Peptidase 1; ALP; ALP1; Isoaspartyl Peptidase/L-Asparaginase; Asparaginase-Like 1 Protein; L-Asparagine Amidohydrolase; Asparaginase-Like Protein 1; Beta-Aspartyl-Peptidase; Isoaspartyl Dipeptidase; Asparaginase Like 1; EC 3.5.1.1; FLJ22316; CRASH; Testis Secretory Sperm-Binding Protein Li 242mP; L-Asparaginase; EC 3.4.19.5
Immunogen	Recombinant protein of human ASRGL1

KD-Validated Anti-ASRGL1 Mouse Monoclonal Antibody - Additional Information

Gene ID	80150
Other Names	
Isoaspartyl peptidase/L-asparaginase, 3.4.19.5, 3.5.1.1, Asparaginase-like protein 1, Beta-aspartyl-peptidase, Isoaspartyl dipeptidase, L-asparagine amidohydrolase, Isoaspartyl peptidase/L-asparaginase alpha chain, Isoaspartyl peptidase/L-asparaginase beta chain, ASRGL1, ALP, CRASH	

KD-Validated Anti-ASRGL1 Mouse Monoclonal Antibody - Protein Information**Name** ASRGL1**Synonyms** ALP, CRASH**Function**

Has both L-asparaginase and beta-aspartyl peptidase activity. May be involved in the production of L-aspartate, which can act as an excitatory neurotransmitter in some brain regions. Is highly active with L-Asp beta-methyl ester. Besides, has catalytic activity toward beta-aspartyl dipeptides and their methyl esters, including beta-L-Asp- L-Phe, beta-L-Asp-L-Phe methyl ester (aspartame), beta-L-Asp-L-Ala, beta-L-Asp-L-Leu and beta-L-Asp-L-Lys. Does not have aspartylglucosaminidase activity and is inactive toward GlcNAc-L-Asn. Likewise, has no activity toward glutamine.

Cellular Location

Cytoplasm. Note=Midpiece of sperm tail

Tissue Location

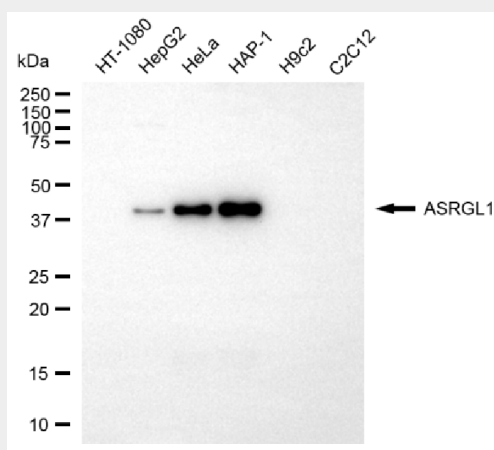
Expressed in brain, kidney, testis and tissues of the gastrointestinal tract. Present in sperm (at protein level). Over- expressed in uterine, mammary, prostatic and ovarian carcinoma

KD-Validated Anti-ASRGL1 Mouse Monoclonal Antibody - Protocols

Provided below are standard protocols that you may find useful for product applications.

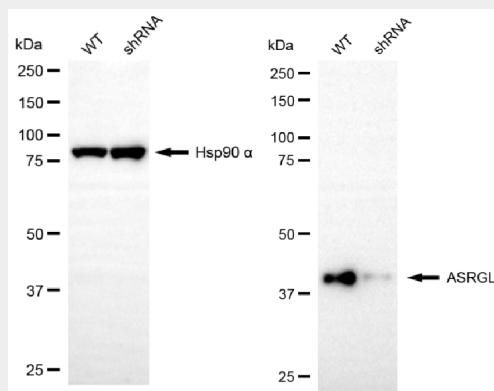
- [Western Blot](#)
- [Blocking Peptides](#)
- [Dot Blot](#)
- [Immunohistochemistry](#)
- [Immunofluorescence](#)
- [Immunoprecipitation](#)
- [Flow Cytometry](#)
- [Cell Culture](#)

KD-Validated Anti-ASRGL1 Mouse Monoclonal Antibody - Images



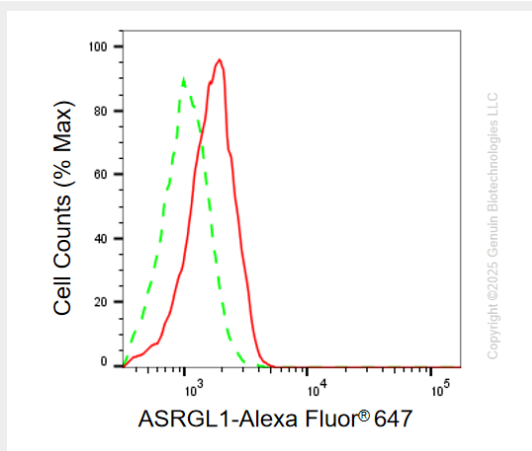
Copyright ©2025 Genuin Biotechnologies LLC

Western blotting analysis using anti-ASRGL1 antibody (Cat#AGI2181). Total cell lysates (30 µg) from various cell lines were loaded and separated by SDS-PAGE. The blot was incubated with anti-ASRGL1 antibody (Cat#AGI2181, 1:2,000) and HRP-conjugated goat anti-mouse secondary antibody respectively.



Copyright ©2025 Genuin Biotechnologies LLC

Western blotting analysis using anti-ASRGL1 antibody (Cat#AGI2181). ASRGL1 expression in wild-type (WT) and ASRGL1 shRNA knockdown (KD) HeLa cells with 20 μ g of total cell lysates. Hsp90 α serves as a loading control. The blot was incubated with anti-ASRGL1 antibody (Cat#AGI2181, 1:2,000) and HRP-conjugated goat anti-mouse secondary antibody respectively.



Flow cytometric analysis of ASRGL1 expression in HeLa cells using anti-ASRGL1 antibody (Cat#AGI2181, 1:2,000). Green, isotype control; red, ASRGL1.