

KD-Validated Anti-UBE2Z Mouse Monoclonal Antibody
Mouse monoclonal antibody
Catalog # AGI2182**Specification****KD-Validated Anti-UBE2Z Mouse Monoclonal Antibody - Product Information**

Application	WB, FC
Primary Accession	Q9H832
Reactivity	Rat, Human, Mouse
Clonality	Monoclonal
Isotype	Mouse IgG2b
Calculated MW	Predicted, 38kDa, observed, 38 kDa KDa
Gene Name	UBE2Z
Aliases	UBE2Z; Ubiquitin Conjugating Enzyme E2 Z; USE1; Uba6-Specific E2 Conjugating Enzyme 1; Ubiquitin-Conjugating Enzyme E2 Z; E2 Ubiquitin-Conjugating Enzyme Z; Ubiquitin Carrier Protein Z; Ubiquitin-Protein Ligase Z; UBA6-Specific Enzyme E2; FLJ13855; Ubiquitin-Conjugating Enzyme E2Z; Ubiquitin Conjugating Enzyme E2Z; EC 2.3.2.23; EC 6.3.2.19; HOYS7; Use1
Immunogen	Recombinant protein of human UBE2Z

KD-Validated Anti-UBE2Z Mouse Monoclonal Antibody - Additional Information

Gene ID	65264
Other Names	Ubiquitin-conjugating enzyme E2 Z, 2.3.2.23, E2 ubiquitin-conjugating enzyme Z, Uba6-specific E2 conjugating enzyme 1, Use1, Ubiquitin carrier protein Z, Ubiquitin-protein ligase Z, UBE2Z

KD-Validated Anti-UBE2Z Mouse Monoclonal Antibody - Protein Information**Name** UBE2Z**Function**

Catalyzes the covalent attachment of ubiquitin to other proteins (By similarity). Specific substrate for UBA6, not charged with ubiquitin by UBE1. May be involved in apoptosis regulation.

Cellular Location

Cytoplasm. Nucleus

Tissue Location

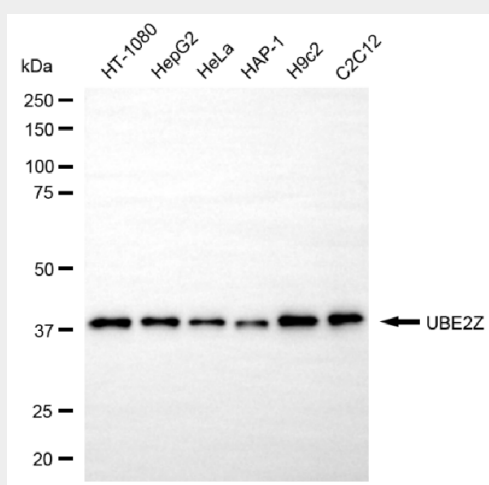
Widely expressed. Highly in placenta, pancreas, spleen and testis.

KD-Validated Anti-UBE2Z Mouse Monoclonal Antibody - Protocols

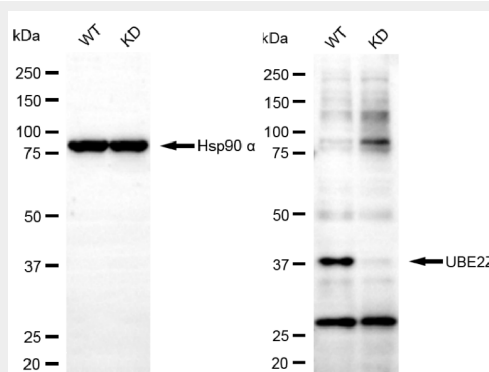
Provided below are standard protocols that you may find useful for product applications.

- [Western Blot](#)
- [Blocking Peptides](#)
- [Dot Blot](#)
- [Immunohistochemistry](#)
- [Immunofluorescence](#)
- [Immunoprecipitation](#)
- [Flow Cytometry](#)
- [Cell Culture](#)

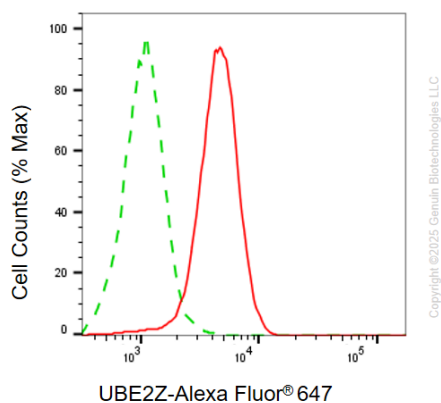
KD-Validated Anti-UBE2Z Mouse Monoclonal Antibody - Images



Western blotting analysis using anti-UBE2Z antibody (Cat#AGI2182). Total cell lysates (30 µg) from various cell lines were loaded and separated by SDS-PAGE. The blot was incubated with anti-UBE2Z antibody (Cat#AGI2182, 1:2,000) and HRP-conjugated goat anti-mouse secondary antibody respectively.



Western blotting analysis using anti-UBE2Z antibody (Cat#AGI2182). UBE2Z expression in wild-type (WT) and UBE2Z shRNA knockdown (KD) HeLa cells with 20 µg of total cell lysates. Hsp90 α serves as a loading control. The blot was incubated with anti-UBE2Z antibody (Cat#AGI2182, 1:2,000) and HRP-conjugated goat anti-mouse secondary antibody respectively.



Flow cytometric analysis of UBE2Z expression in HepG2 cells using anti-UBE2Z antibody (Cat#AGI2182, 1:1,000). Green, isotype control; red, UBE2Z.