

**KD-Validated Anti-UBE2Z Mouse Monoclonal Antibody**  
**Mouse monoclonal antibody**  
**Catalog # AGI2183****Specification****KD-Validated Anti-UBE2Z Mouse Monoclonal Antibody - Product Information**

Application	WB, FC
Primary Accession	<a href="#">Q9H832</a>
Reactivity	Rat, Human, Mouse
Clonality	Monoclonal
Isotype	Mouse IgG2a
Calculated MW	Predicted, 38 kDa, observed, 38 kDa kDa
Gene Name	UBE2Z
Aliases	UBE2Z; Ubiquitin Conjugating Enzyme E2 Z; USE1; Uba6-Specific E2 Conjugating Enzyme 1; Ubiquitin-Conjugating Enzyme E2 Z; E2 Ubiquitin-Conjugating Enzyme Z; Ubiquitin Carrier Protein Z; Ubiquitin-Protein Ligase Z; UBA6-Specific Enzyme E2; FLJ13855; Ubiquitin-Conjugating Enzyme E2Z; Ubiquitin Conjugating Enzyme E2Z; EC 2.3.2.23; EC 6.3.2.19; HOYS7; Use1
Immunogen	Recombinant protein of human UBE2Z

**KD-Validated Anti-UBE2Z Mouse Monoclonal Antibody - Additional Information**

Gene ID	65264
<b>Other Names</b>	Ubiquitin-conjugating enzyme E2 Z, 2.3.2.23, E2 ubiquitin-conjugating enzyme Z, Uba6-specific E2 conjugating enzyme 1, Use1, Ubiquitin carrier protein Z, Ubiquitin-protein ligase Z, UBE2Z

**KD-Validated Anti-UBE2Z Mouse Monoclonal Antibody - Protein Information****Name** UBE2Z**Function**

Catalyzes the covalent attachment of ubiquitin to other proteins (By similarity). Specific substrate for UBA6, not charged with ubiquitin by UBE1. May be involved in apoptosis regulation.

**Cellular Location**

Cytoplasm. Nucleus

**Tissue Location**

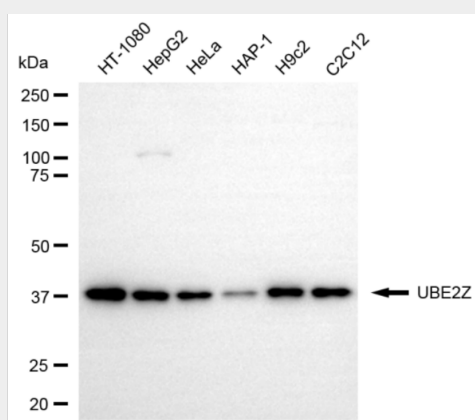
Widely expressed. Highly in placenta, pancreas, spleen and testis.

## KD-Validated Anti-UBE2Z Mouse Monoclonal Antibody - Protocols

Provided below are standard protocols that you may find useful for product applications.

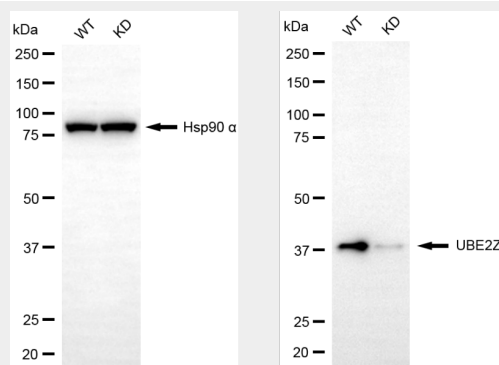
- [Western Blot](#)
- [Blocking Peptides](#)
- [Dot Blot](#)
- [Immunohistochemistry](#)
- [Immunofluorescence](#)
- [Immunoprecipitation](#)
- [Flow Cytometry](#)
- [Cell Culture](#)

## KD-Validated Anti-UBE2Z Mouse Monoclonal Antibody - Images

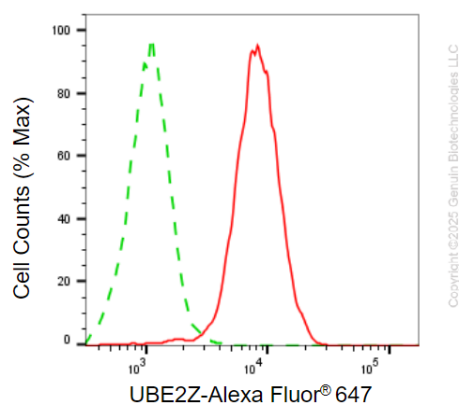


Western blotting analysis using anti-UBE2Z antibody (Cat#65096). Total cell lysates (30 µg) from various cell lines were loaded and separated by SDS-PAGE. The blot was incubated with anti-UBE2Z antibody (Cat#65096, 1:2,000) and HRP-conjugated goat anti-mouse secondary antibody (Cat#101, 1:20,000) respectively. Image was developed using FeQ™ ECL Substrate Kit (Cat#226).

Western blotting analysis using anti-UBE2Z antibody (Cat#AGI2183). Total cell lysates (30 µg) from various cell lines were loaded and separated by SDS-PAGE. The blot was incubated with anti-UBE2Z antibody (Cat#AGI2183, 1:2,000) and HRP-conjugated goat anti-mouse secondary antibody respectively.



Western blotting analysis using anti-UBE2Z antibody (Cat#AGI2183). UBE2Z expression in wild-type (WT) and UBE2Z knockdown (KD) HeLa cells with 20 µg of total cell lysates. Hsp90 α serves as a loading control. The blot was incubated with anti-UBE2Z antibody (Cat#AGI2183, 1:2,000) and HRP-conjugated goat anti-mouse secondary antibody respectively.



Flow cytometric analysis of UBE2Z expression in HepG2 cells using anti-UBE2Z antibody (Cat#AGI2183, 1:2,000). Green, isotype control; red, UBE2Z.