

KD-Validated Anti-REEP2 Mouse Monoclonal Antibody
Mouse monoclonal Antibody
Catalog # AGI2193**Specification**

KD-Validated Anti-REEP2 Mouse Monoclonal Antibody - Product Information

Application	WB
Primary Accession	Q9BRK0
Reactivity	Human
Clonality	Monoclonal
Isotype	Mouse IgG2a
Calculated MW	Predicted, 28 kDa, observed, 28 kDa kDa
Gene Name	REEP2
Aliases	REEP2; Receptor Accessory Protein 2; SGC32445; C5orf19; SPG72; Yip2d; Receptor Expression-Enhancing Protein 2; Chromosome 5 Open Reading Frame 19; SPG72A; SPG72B
Immunogen	Recombinant protein of human REEP2

KD-Validated Anti-REEP2 Mouse Monoclonal Antibody - Additional Information

Gene ID	51308
Other Names	
Receptor expression-enhancing protein 2, REEP2, C5orf19, SGC32445	

KD-Validated Anti-REEP2 Mouse Monoclonal Antibody - Protein Information**Name** REEP2**Synonyms** C5orf19, SGC32445**Function**

Required for endoplasmic reticulum (ER) network formation, shaping and remodeling. May enhance the cell surface expression of odorant receptors (By similarity).

Cellular Location

Membrane; Multi-pass membrane protein

Tissue Location

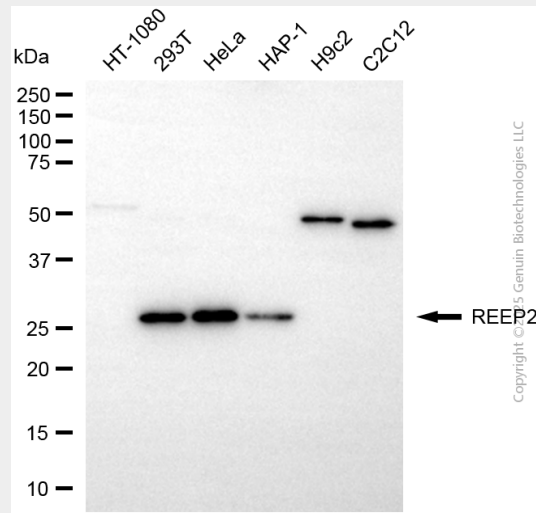
Detected in brain, heart and skeletal muscle, and at low levels in placenta, kidney and pancreas (PubMed:11161817) Expressed in circumvallate papillae (PubMed:16720576)

KD-Validated Anti-REEP2 Mouse Monoclonal Antibody - Protocols

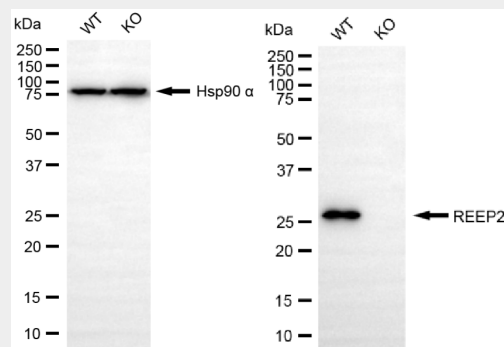
Provided below are standard protocols that you may find useful for product applications.

- [Western Blot](#)
- [Blocking Peptides](#)
- [Dot Blot](#)
- [Immunohistochemistry](#)
- [Immunofluorescence](#)
- [Immunoprecipitation](#)
- [Flow Cytometry](#)
- [Cell Culture](#)

KD-Validated Anti-REEP2 Mouse Monoclonal Antibody - Images



Western blotting analysis using anti-REEP2 antibody (Cat#AGI2193). Total cell lysates (30 µg) from various cell lines were loaded and separated by SDS-PAGE. The blot was incubated with anti-REEP2 antibody (Cat#AGI2193, 1:2,500) and HRP-conjugated goat anti-mouse secondary antibody respectively.



Western blotting analysis using anti-REEP2 antibody (Cat#AGI2193). REEP2 expression in wild-type (WT) and REEP2 knockdown (KD) 293T cells with 20 µg of total cell lysates. Hsp90 α serves as a loading control. The blot was incubated with anti-REEP2 antibody (Cat#AGI2193, 1:2,500) and HRP-conjugated goat anti-mouse secondary antibody respectively.