

**KD-Validated Anti-CXXC1 Rabbit Monoclonal Antibody**  
**Rabbit monoclonal Antibody**  
**Catalog # AGI2199****Specification**

---

**KD-Validated Anti-CXXC1 Rabbit Monoclonal Antibody - Product Information**

Application	WB, FC
Primary Accession	<a href="#">Q9P0U4</a>
Reactivity	Rat, Human, Mouse
Clonality	Monoclonal
Isotype	Rabbit IgG
Calculated MW	Predicted, 76 kDa, observed, 75 kDa kDa
Gene Name	CXXC1
Aliases	CXXC1; CXXC Finger Protein; PCCX1; PHF18; CGBP; CFP1; HsT2645; ZCGPC1; HCGBP; SPP1; DNA-Binding Protein With PHD Finger And CXXC Domain; PHD Finger And CXXC Domain-Containing Protein 1; Zinc Finger, CpG Binding-Type Containing 1; CXXC-Type Zinc Finger Protein 1; CXXC Finger 1 (PHD Domain); CpG Binding Protein; CpG-Binding Protein; 2410002I16Rik; 5830420C16Rik
Immunogen	A synthesized peptide derived from human CGBP

**KD-Validated Anti-CXXC1 Rabbit Monoclonal Antibody - Additional Information**

Gene ID	30827
<b>Other Names</b>	
CXXC-type zinc finger protein 1, CpG-binding protein, PHD finger and CXXC domain-containing protein 1, CXXC1, CFP1, CGBP, PCCX1, PHF18	

**KD-Validated Anti-CXXC1 Rabbit Monoclonal Antibody - Protein Information****Name** CXXC1**Synonyms** CFP1, CGBP, PCCX1, PHF18**Function**

Transcriptional activator that exhibits a unique DNA binding specificity for CpG unmethylated motifs with a preference for CpGG.

**Cellular Location**

Nucleus speckle. Nucleus {ECO:0000250|UniProtKB:Q9CWW7} Note=Associated with euchromatin. During mitosis, excluded from condensed chromosomes

**Tissue Location**

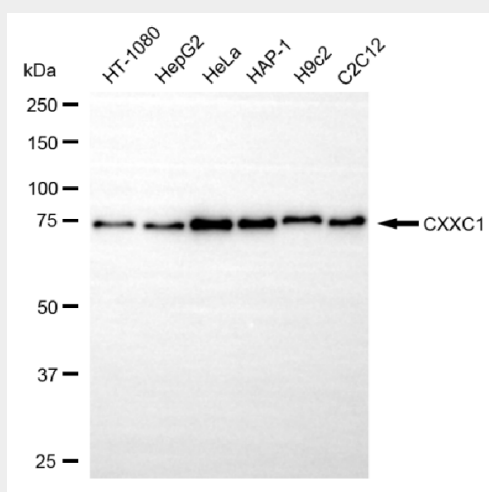
Ubiquitous.

## KD-Validated Anti-CXXC1 Rabbit Monoclonal Antibody - Protocols

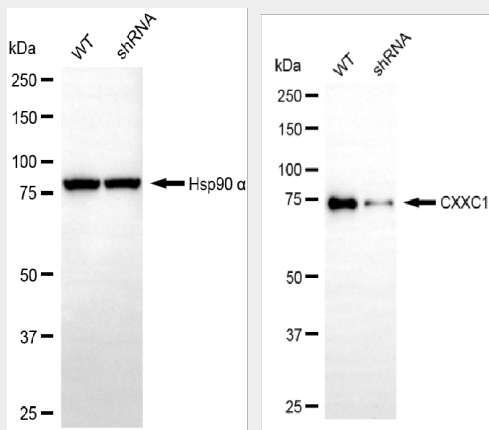
Provided below are standard protocols that you may find useful for product applications.

- [Western Blot](#)
- [Blocking Peptides](#)
- [Dot Blot](#)
- [Immunohistochemistry](#)
- [Immunofluorescence](#)
- [Immunoprecipitation](#)
- [Flow Cytometry](#)
- [Cell Culture](#)

## KD-Validated Anti-CXXC1 Rabbit Monoclonal Antibody - Images

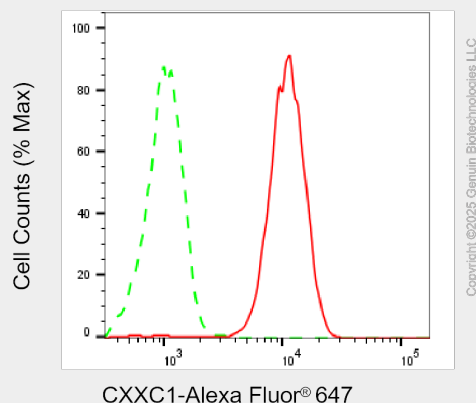


Western blotting analysis using anti-CXXC1 antibody (Cat#AGI2199). Total cell lysates (30 µg) from various cell lines were loaded and separated by SDS-PAGE. The blot was incubated with anti-CXXC1 antibody (Cat#AGI2199, 1:5,000) and HRP-conjugated goat anti-rabbit secondary antibody respectively.



Western blotting analysis using anti-CXXC1 antibody (Cat#AGI2199). CXXC1 expression in wild-type (WT) and CXXC1 shRNA knockdown (KD) HeLa cells with 20 µg of total cell lysates.

Hsp90  $\alpha$  serves as a loading control. The blot was incubated with anti-CXXC1 antibody (Cat#AGI2199, 1:5,000) and HRP-conjugated goat anti-rabbit secondary antibody respectively.



Flow cytometric analysis of CXXC1 expression in C2C12 cells using anti-CXXC1 antibody (Cat#AGI2199, 1:2,000). Green, isotype control; red, CXXC1.