

**KD-Validated Anti-Cyclin T1 Rabbit Monoclonal Antibody**  
**Rabbit monoclonal Antibody**  
**Catalog # AGI2202****Specification****KD-Validated Anti-Cyclin T1 Rabbit Monoclonal Antibody - Product Information**

Application	WB, FC
Primary Accession	<a href="#">O60563</a>
Reactivity	Rat, Human, Mouse
Clonality	Monoclonal
Isotype	Rabbit IgG
Calculated MW	Predicted, 81 kDa, observed, 75 kDa kDa
Gene Name	CCNT1
Aliases	CCNT1; Cyclin T1; CYCT1; CCNT; Human Immunodeficiency Virus Type 1 (HIV-1) Expression (Elevated); Cyclin-T1; HIVE1; CDK9-Associated C-Type Protein; Cyclin C-Related Protein; MLLT10/CCNT1 Fusion; Cyclin-T; CycT1
Immunogen	Recombinant protein of human Cyclin T1

**KD-Validated Anti-Cyclin T1 Rabbit Monoclonal Antibody - Additional Information**

Gene ID	904
<b>Other Names</b>	
Cyclin-T1, CycT1, Cyclin-T, CCNT1	

**KD-Validated Anti-Cyclin T1 Rabbit Monoclonal Antibody - Protein Information****Name** CCNT1**Function**

Regulatory subunit of the cyclin-dependent kinase pair (CDK9/cyclin-T1) complex, also called positive transcription elongation factor B (P-TEFb), which facilitates the transition from abortive to productive elongation by phosphorylating the CTD (C-terminal domain) of the large subunit of RNA polymerase II (RNA Pol II) (PubMed: [16109376](http://www.uniprot.org/citations/16109376) target="\_blank">16109376</a>, PubMed: [16109377](http://www.uniprot.org/citations/16109377) target="\_blank">16109377</a>, PubMed: [30134174](http://www.uniprot.org/citations/30134174) target="\_blank">30134174</a>, PubMed: [35393539](http://www.uniprot.org/citations/35393539) target="\_blank">35393539</a>). Required to activate the protein kinase activity of CDK9: acts by mediating formation of liquid-liquid phase separation (LLPS) that enhances binding of P-TEFb to the CTD of RNA Pol II (PubMed: [29849146](http://www.uniprot.org/citations/29849146) target="\_blank">29849146</a>, PubMed: [35393539](http://www.uniprot.org/citations/35393539) target="\_blank">35393539</a>).

**Cellular Location**

Nucleus

## Tissue Location

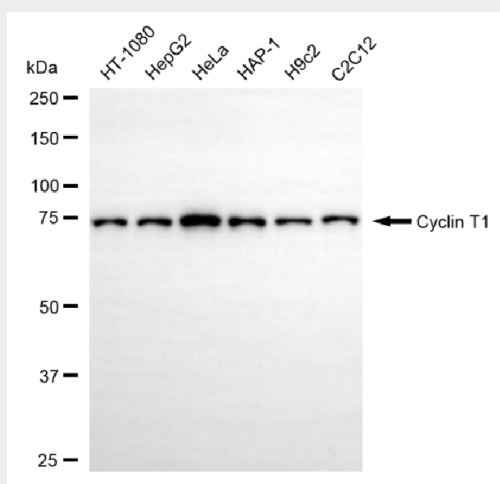
Ubiquitously expressed.

## KD-Validated Anti-Cyclin T1 Rabbit Monoclonal Antibody - Protocols

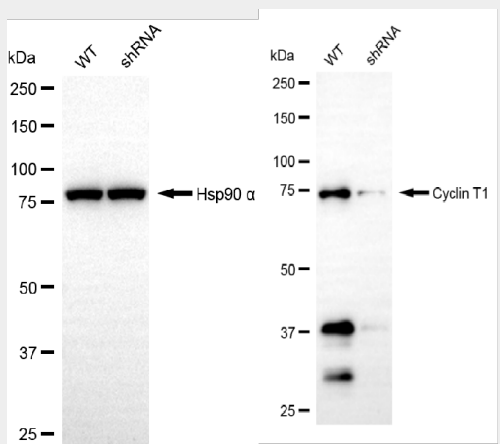
Provided below are standard protocols that you may find useful for product applications.

- [Western Blot](#)
- [Blocking Peptides](#)
- [Dot Blot](#)
- [Immunohistochemistry](#)
- [Immunofluorescence](#)
- [Immunoprecipitation](#)
- [Flow Cytometry](#)
- [Cell Culture](#)

## KD-Validated Anti-Cyclin T1 Rabbit Monoclonal Antibody - Images

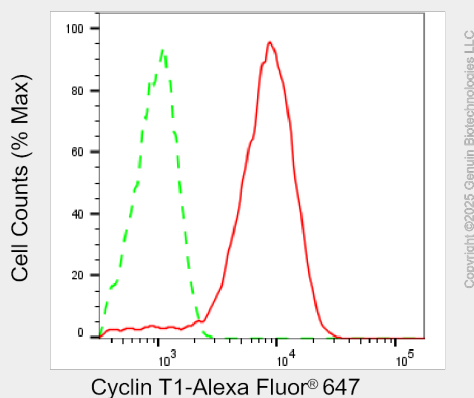


Western blotting analysis using anti-cyclin T1 antibody (Cat#AGI2202). Total cell lysates (30 µg) from various cell lines were loaded and separated by SDS-PAGE. The blot was incubated with anti-cyclin T1 antibody (Cat#AGI2202, 1:5,000) and HRP-conjugated goat anti-rabbit secondary antibody respectively.



Western blotting analysis using anti-cyclin T1 antibody (Cat#AGI2202). Cyclin T1 expression in

wild-type (WT) and cyclin T1 (CCNT1) shRNA knockdown (KD) HT-1080 cells with 20 µg of total cell lysates. Hsp90 α serves as a loading control. The blot was incubated with anti-cyclin T1 antibody (Cat#AGI2202, 1:5,000) and HRP-conjugated goat anti-rabbit secondary antibody respectively.



Flow cytometric analysis of Cyclin T1 expression in HeLa cells using anti-Cyclin T1 antibody (Cat#AGI2202, 1:2,000). Green, isotype control; red, Cyclin T1.