

KD-Validated Anti-MTHFR Rabbit Monoclonal Antibody
Rabbit monoclonal Antibody
Catalog # AGI2206**Specification****KD-Validated Anti-MTHFR Rabbit Monoclonal Antibody - Product Information**

Application	WB, FC
Primary Accession	P42898
Reactivity	Human, Mouse
Clonality	Monoclonal
Isotype	Rabbit IgG
Calculated MW	Predicted, 75kDa, observed, 70 kDa
Gene Name	KDa MTHFR
Aliases	MTHFR; Methylenetetrahydrofolate Reductase; 5,10-Methylenetetrahydrofolate Reductase (NADPH); Methylenetetrahydrofolate Reductase (NAD(P)H); Methylenetetrahydrofolate Reductase (NADPH); EC 1.5.1.53; EC 1.5.1.20
Immunogen	Recombinant protein of human MTHFR

KD-Validated Anti-MTHFR Rabbit Monoclonal Antibody - Additional Information

Gene ID	4524
Other Names	
Methylenetetrahydrofolate reductase (NADPH), 1.5.1.53, MTHFR (http://www.genenames.org/cgi-bin/gene_symbol_report?hgnc_id=7436) HGNC:7436	

KD-Validated Anti-MTHFR Rabbit Monoclonal Antibody - Protein Information**Name** MTHFR ([HGNC:7436](#))**Function**

Catalyzes the conversion of 5,10-methylenetetrahydrofolate to 5-methyltetrahydrofolate, a cosubstrate for homocysteine remethylation to methionine (PubMed:[29891918](http://www.uniprot.org/citations/29891918)). Represents a key regulatory connection between the folate and methionine cycles (Probable).

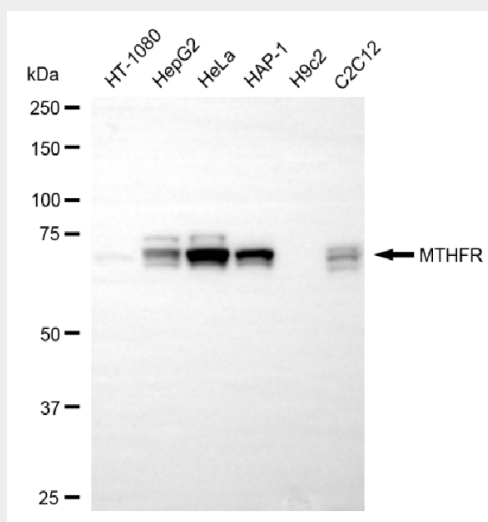
KD-Validated Anti-MTHFR Rabbit Monoclonal Antibody - Protocols

Provided below are standard protocols that you may find useful for product applications.

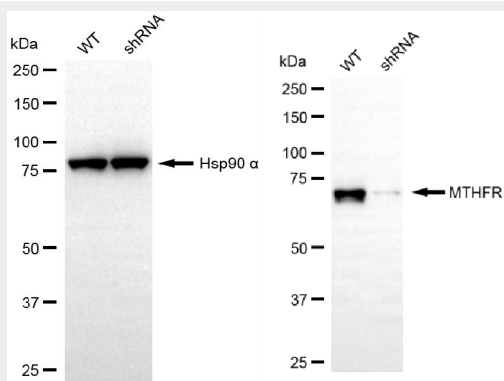
- [Western Blot](#)
- [Blocking Peptides](#)

- [Dot Blot](#)
- [Immunohistochemistry](#)
- [Immunofluorescence](#)
- [Immunoprecipitation](#)
- [Flow Cytometry](#)
- [Cell Culture](#)

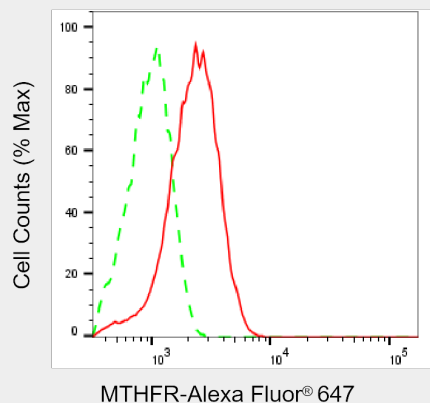
KD-Validated Anti-MTHFR Rabbit Monoclonal Antibody - Images



Western blotting analysis using anti-MTHFR antibody (Cat#AGI2206). Total cell lysates (30 µg) from various cell lines were loaded and separated by SDS-PAGE. The blot was incubated with anti-MTHFR antibody (Cat#AGI2206, 1:5,000) and HRP-conjugated goat anti-rabbit secondary antibody respectively.



Western blotting analysis using anti-MTHFR antibody (Cat#AGI2206). MTHFR expression in wild-type (WT) and MTHFR shRNA knockdown (KD) HeLa cells with 20 µg of total cell lysates. Hsp90 α serves as a loading control. The blot was incubated with anti-MTHFR antibody (Cat#AGI2206, 1:5,000) and HRP-conjugated goat anti-rabbit secondary antibody respectively.



Flow cytometric analysis of MTHFR expression in HeLa cells using anti-MTHFR antibody (Cat#AGI2206, 1:2,000). Green, isotype control; red, MTHFR.