

KD-Validated Anti-PAIP1 Rabbit Monoclonal Antibody
Rabbit monoclonal Antibody
Catalog # AGI2207**Specification****KD-Validated Anti-PAIP1 Rabbit Monoclonal Antibody - Product Information**

Application	WB, FC
Primary Accession	Q9H074
Reactivity	Rat, Human, Mouse
Clonality	Monoclonal
Isotype	Rabbit IgG
Calculated MW	Predicted, 54 kDa, observed, 45-60 kDa
Gene Name	KDa
Aliases	PAIP1 PAIP1; Poly(A) Binding Protein Interacting Protein 1; PABP-Interacting Protein 1; Polyadenylate-Binding Protein-Interacting Protein 1; PAIP-1; Poly(A)-Binding Protein-Interacting Protein 1; PABC1-Interacting Protein 1
Immunogen	Recombinant protein of human MTHFR

KD-Validated Anti-PAIP1 Rabbit Monoclonal Antibody - Additional Information

Gene ID	10605
Other Names	
Polyadenylate-binding protein-interacting protein 1, PABP-interacting protein 1, PAIP-1, Poly(A)-binding protein-interacting protein 1, PAIP1 (http://www.genenames.org/cgi-bin/gene_symbol_report?hgnc_id=16945)	
target="_blank">HGNC:16945)	

KD-Validated Anti-PAIP1 Rabbit Monoclonal Antibody - Protein Information**Name** PAIP1 ([HGNC:16945](#))**Function**

Acts as a coactivator in the regulation of translation initiation of poly(A)-containing mRNAs. Its stimulatory activity on translation is mediated via its action on PABPC1. Competes with PAIP2 for binding to PABPC1. Its association with EIF4A and PABPC1 may potentiate contacts between mRNA termini. May also be involved in translationally coupled mRNA turnover. Implicated with other RNA-binding proteins in the cytoplasmic deadenylation/translational and decay interplay of the FOS mRNA mediated by the major coding-region determinant of instability (mCRD) domain.

Cellular Location

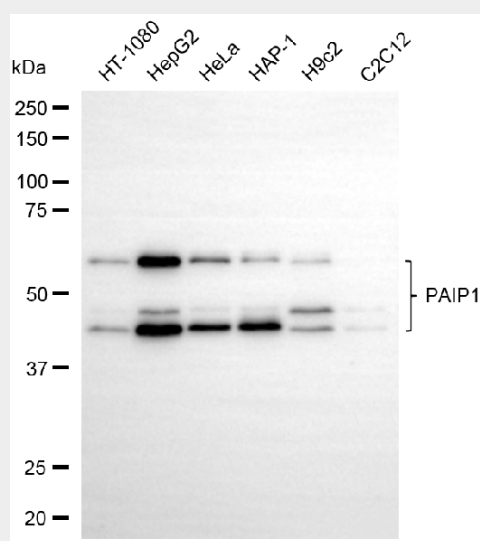
Cytoplasm.

KD-Validated Anti-PAIP1 Rabbit Monoclonal Antibody - Protocols

Provided below are standard protocols that you may find useful for product applications.

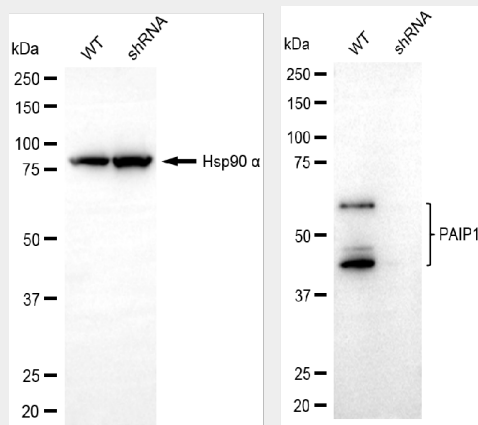
- [Western Blot](#)
- [Blocking Peptides](#)
- [Dot Blot](#)
- [Immunohistochemistry](#)
- [Immunofluorescence](#)
- [Immunoprecipitation](#)
- [Flow Cytometry](#)
- [Cell Culture](#)

KD-Validated Anti-PAIP1 Rabbit Monoclonal Antibody - Images



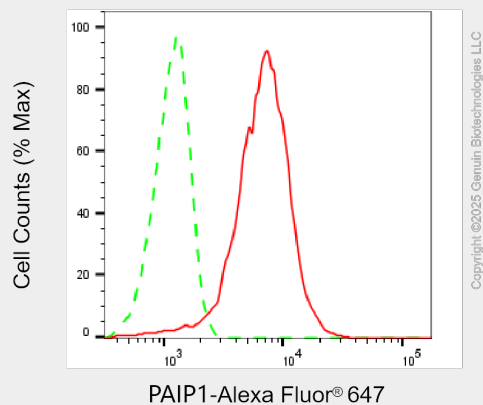
Copyright ©2025 Genuin Biotechnologies LLC

Western blotting analysis using anti-PAIP1 antibody (Cat#AGI2207). Total cell lysates (30 µg) from various cell lines were loaded and separated by SDS-PAGE. The blot was incubated with anti-PAIP1 antibody (Cat#AGI2207, 1:5,000) and HRP-conjugated goat anti-rabbit secondary antibody respectively.



Copyright ©2025 Genuin Biotechnologies LLC

Western blotting analysis using anti-PAIP1 antibody (Cat#AGI2207). PAIP1 expression in wild-type (WT) and PAIP1 shRNA knockdown (KD) HeLa cells with 30 µg of total cell lysates. Hsp90 α serves as a loading control. The blot was incubated with anti-PAIP1 antibody (Cat#AGI2207, 1:5,000) and HRP-conjugated goat anti-rabbit secondary antibody respectively.



Flow cytometric analysis of PAIP1 expression in HepG2 cells using anti-PAIP1 antibody (Cat#AGI2207, 1:2,000). Green, isotype control; red, PAIP1.