

KD-Validated Anti-RAP1B Rabbit Monoclonal Antibody
Rabbit monoclonal Antibody
Catalog # AGI2208**Specification**

KD-Validated Anti-RAP1B Rabbit Monoclonal Antibody - Product Information

Application	WB, FC
Primary Accession	P61224
Reactivity	Rat, Human, Mouse
Clonality	Monoclonal
Isotype	Rabbit IgG
Calculated MW	Predicted, 21 kDa, observed, 20 kDa kDa
Gene Name	RAP1B
Aliases	RAP1B; RAP1B, Member Of RAS Oncogene Family; K-REV; RAL1B; GTP-Binding Protein Smg P21B; Ras-Related Protein Rap-1b; DKFZp586H0723; Ras Family Small GTP Binding Protein RAP1B; RAS-Related Protein RAP1B; Small GTP Binding Protein; EC 3.6.5.2; THC11
Immunogen	A synthesized peptide derived from human RAP1A/B

KD-Validated Anti-RAP1B Rabbit Monoclonal Antibody - Additional Information

Gene ID	5908
Other Names	
Ras-related protein Rap-1b, 3.6.5.2, GTP-binding protein smg p21B, RAP1B	

KD-Validated Anti-RAP1B Rabbit Monoclonal Antibody - Protein Information**Name** RAP1B**Function**

GTP-binding protein that possesses intrinsic GTPase activity. Contributes to the polarizing activity of KRIT1 and CDH5 in the establishment and maintenance of correct endothelial cell polarity and vascular lumen. Required for the localization of phosphorylated PRKCZ, PARD3 and TIAM1 to the cell junction. Plays a role in the establishment of basal endothelial barrier function.

Cellular Location

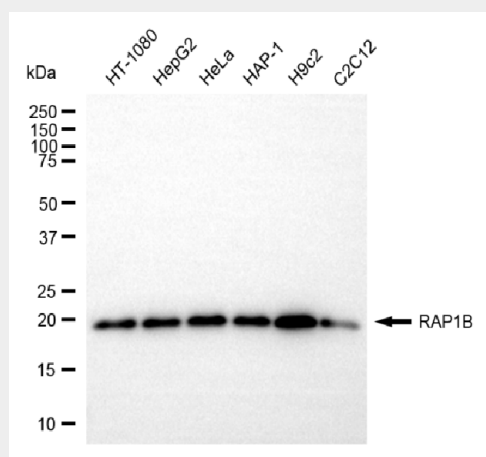
Cell membrane. Cytoplasm, cytosol. Cell junction. Note=May shuttle between plasma membrane and cytosol (PubMed:3141412). Presence of KRIT1 and CDH5 is required for its localization to the cell junction (PubMed:20332120)

KD-Validated Anti-RAP1B Rabbit Monoclonal Antibody - Protocols

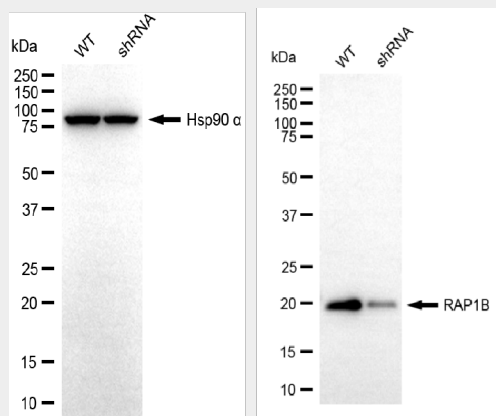
Provided below are standard protocols that you may find useful for product applications.

- [Western Blot](#)
- [Blocking Peptides](#)
- [Dot Blot](#)
- [Immunohistochemistry](#)
- [Immunofluorescence](#)
- [Immunoprecipitation](#)
- [Flow Cytometry](#)
- [Cell Culture](#)

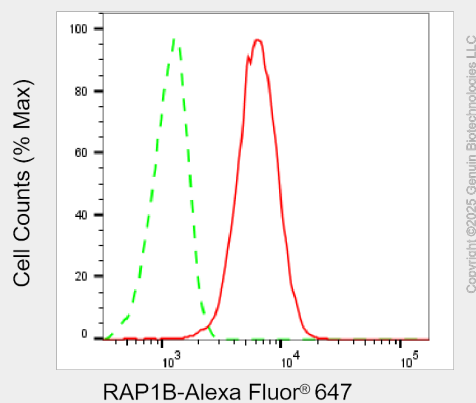
KD-Validated Anti-RAP1B Rabbit Monoclonal Antibody - Images



Western blotting analysis using anti-RAP1B antibody (Cat#AGI2208). Total cell lysates (30 µg) from various cell lines were loaded and separated by SDS-PAGE. The blot was incubated with anti-RAP1B antibody (Cat#AGI2208, 1:5,000) and HRP-conjugated goat anti-rabbit secondary antibody respectively.



Western blotting analysis using anti-RAP1B antibody (Cat#AGI2208). RAP1B expression in wild-type (WT) and RAP1B shRNA knockdown (KD) HT-1080 cells with 20 µg of total cell lysates. Hsp90 α serves as a loading control. The blot was incubated with anti-RAP1B antibody (Cat#AGI2208, 1:5,000) and HRP-conjugated goat anti-rabbit secondary antibody respectively.



Flow cytometric analysis of RAP1B expression in HepG2 cells using anti-RAP1B antibody (Cat#AGI2208, 1:2,000). Green, isotype control; red, RAP1B.