

KD-Validated Anti-DYNLT1 Rabbit Monoclonal Antibody
Rabbit monoclonal Antibody
Catalog # AGI2212**Specification****KD-Validated Anti-DYNLT1 Rabbit Monoclonal Antibody - Product Information**

Application	WB, FC
Primary Accession	P63172
Reactivity	Rat, Human, Mouse
Clonality	Monoclonal
Isotype	Rabbit IgG
Calculated MW	Predicted, 12 kDa, observed, 14 kDa
Gene Name	DYNLT1
Aliases	DYNLT1; Dynein Light Chain Tctex-Type 1; TCTEX1; Tctex-1; TCTEL1; T-Complex-Associated-Testis-Expressed 1-Like 1; T-Complex Testis-Specific Protein 1 Homolog; Protein CW-1; TCTEX-1; CW-1 Recombinant protein of human TCTEX-1
Immunogen	

KD-Validated Anti-DYNLT1 Rabbit Monoclonal Antibody - Additional Information

Gene ID	6993
Other Names	
Dynein light chain Tctex-type 1, Protein CW-1, T-complex testis-specific protein 1 homolog, DYNLT1, TCTEL1, TCTEX-1, TCTEX1	

KD-Validated Anti-DYNLT1 Rabbit Monoclonal Antibody - Protein Information**Name** DYNLT1**Synonyms** TCTEL1, TCTEX-1, TCTEX1**Function**

Acts as one of several non-catalytic accessory components of the cytoplasmic dynein 1 complex that are thought to be involved in linking dynein to cargos and to adapter proteins that regulate dynein function. Cytoplasmic dynein 1 acts as a motor for the intracellular retrograde motility of vesicles and organelles along microtubules. Binds to transport cargos and is involved in apical cargo transport such as rhodopsin-bearing vesicles in polarized epithelia. May also be a accessory component of axonemal dynein. (Microbial infection) Is involved in intracellular targeting of D-type retrovirus gag polyproteins to the cytoplasmic assembly site.

Cellular Location

Golgi apparatus. Cytoplasm. Cytoplasm, cytoskeleton, spindle Note=Localizes to mitotic spindles.

Tissue Location

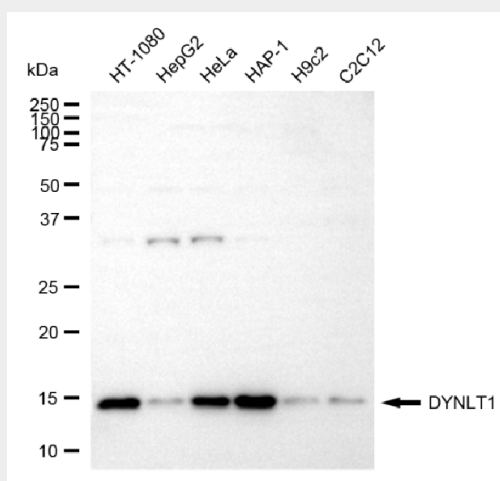
Expressed in heart, placenta, skeletal muscle kidney, pancreas, spleen, prostate, testis, ovary, ileum and colon Expressed in lung endothelial and smooth muscle cells (at protein level).

KD-Validated Anti-DYNLT1 Rabbit Monoclonal Antibody - Protocols

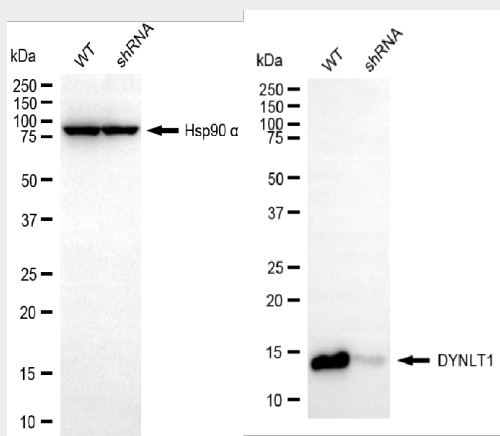
Provided below are standard protocols that you may find useful for product applications.

- [Western Blot](#)
- [Blocking Peptides](#)
- [Dot Blot](#)
- [Immunohistochemistry](#)
- [Immunofluorescence](#)
- [Immunoprecipitation](#)
- [Flow Cytometry](#)
- [Cell Culture](#)

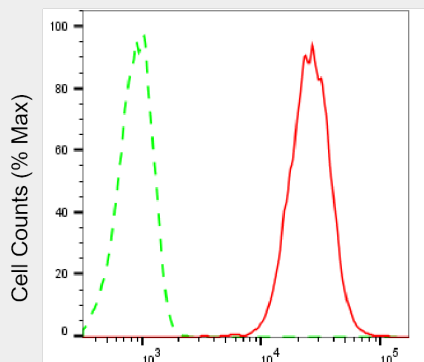
KD-Validated Anti-DYNLT1 Rabbit Monoclonal Antibody - Images



Western blotting analysis using anti-DYNLT1 antibody (Cat#AGI2212). Total cell lysates (30 µg) from various cell lines were loaded and separated by SDS-PAGE. The blot was incubated with anti-DYNLT1 antibody (Cat#AGI2212, 1:5,000) and HRP-conjugated goat anti-rabbit secondary antibody respectively.



Western blotting analysis using anti-DYNLT1 antibody (Cat#AGI2212). DYNLT1 expression in wild-type (WT) and DYNLT1 shRNA knockdown (KD) HeLa cells with 20 µg of total cell lysates. Hsp90 α serves as a loading control. The blot was incubated with anti-DYNLT1 antibody (Cat#AGI2212, 1:5,000) and HRP-conjugated goat anti-rabbit secondary antibody respectively.



Copyright ©2025 Gemini Biotechnologies LLC

DYNLT1-Alexa Fluor® 647

Flow cytometric analysis of DYNLT1 expression in HT-1080 cells using anti-DYNLT1 antibody (Cat#AGI2212, 1:2,000). Green, isotype control; red, DYNLT1.