

**KD-Validated Anti-HEXIM1 Mouse Monoclonal Antibody**  
**Mouse monoclonal antibody**  
**Catalog # AGI2221****Specification****KD-Validated Anti-HEXIM1 Mouse Monoclonal Antibody - Product Information**

Application	WB, FC
Primary Accession	<a href="#">O94992</a>
Reactivity	Rat, Human, Mouse
Clonality	Monoclonal
Isotype	Mouse IgG2a
Calculated MW	Predicted, 41 kDa; observed, 63 kDa KDa
Gene Name	HEXIM1
Aliases	HEXIM1; HEXIM P-TEFb Complex Subunit 1; HIS1; MAQ1; EDG1; Hexamethylene Bis-Acetamide-Inducible Protein 1; Hexamethylene Bisacetamide Inducible 1; Estrogen Down-Regulated Gene 1 Protein; Cardiac Lineage Protein 1; Menage A Quatre Protein 1; Protein HEXIM1; CLP-1; CLP1; Hexamethylene-Bis-Acetamide-Inducible Transcript 1; Hexamethylene Bisacetamide-Inducible Protein; Hexamethylene Bis-Acetamide Inducible 1; Hexamethylene Bis-Acetamide Inducible 1; Menage A Quatre 1; HMBA-Inducible Recombinant protein of human HEXIM1
Immunogen	

**KD-Validated Anti-HEXIM1 Mouse Monoclonal Antibody - Additional Information**

Gene ID	10614
<b>Other Names</b>	
Protein HEXIM1, Cardiac lineage protein 1, Estrogen down-regulated gene 1 protein, Hexamethylene bis-acetamide-inducible protein 1, Menage a quatre protein 1, HEXIM1, CLP1, EDG1, HIS1, MAQ1	

**KD-Validated Anti-HEXIM1 Mouse Monoclonal Antibody - Protein Information****Name** HEXIM1**Synonyms** CLP1, EDG1, HIS1, MAQ1**Function**

Transcriptional regulator which functions as a general RNA polymerase II transcription inhibitor (PubMed: [14580347](http://www.uniprot.org/citations/14580347)), PubMed: [15201869](http://www.uniprot.org/citations/15201869), PubMed: [15713661](http://www.uniprot.org/citations/15713661)).

Core component of the 7SK RNP complex: in cooperation with 7SK snRNA sequesters P-TEFb in a large inactive 7SK snRNP complex preventing RNA polymerase II phosphorylation and subsequent transcriptional elongation (PubMed:<a href="http://www.uniprot.org/citations/12832472" target="\_blank">12832472</a>, PubMed:<a href="http://www.uniprot.org/citations/14580347" target="\_blank">14580347</a>, PubMed:<a href="http://www.uniprot.org/citations/15201869" target="\_blank">15201869</a>, PubMed:<a href="http://www.uniprot.org/citations/15713661" target="\_blank">15713661</a>). May also regulate NF-kappa-B, ESR1, NR3C1 and CIITA-dependent transcriptional activity (PubMed:<a href="http://www.uniprot.org/citations/15940264" target="\_blank">15940264</a>, PubMed:<a href="http://www.uniprot.org/citations/15941832" target="\_blank">15941832</a>, PubMed:<a href="http://www.uniprot.org/citations/17088550" target="\_blank">17088550</a>). Plays a role in the regulation of DNA virus-mediated innate immune response by assembling into the HDP-RNP complex, a complex that serves as a platform for IRF3 phosphorylation and subsequent innate immune response activation through the cGAS-STING pathway (PubMed:<a href="http://www.uniprot.org/citations/28712728" target="\_blank">28712728</a>).

### Cellular Location

Nucleus. Cytoplasm. Note= Binds alpha-importin and is mostly nuclear (PubMed:16362050)

### Tissue Location

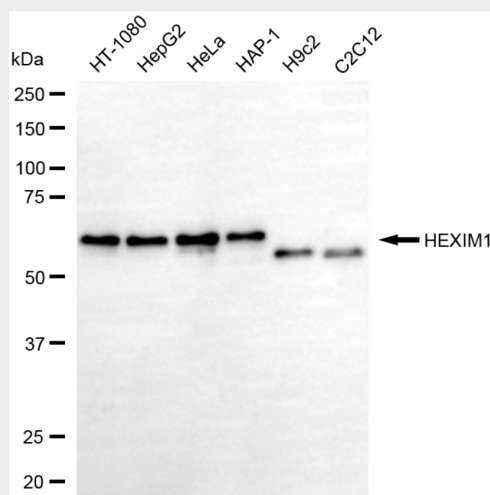
Ubiquitously expressed with higher expression in placenta. HEXIM1 and HEXIM2 are differentially expressed. Expressed in endocrine tissues.

## KD-Validated Anti-HEXIM1 Mouse Monoclonal Antibody - Protocols

Provided below are standard protocols that you may find useful for product applications.

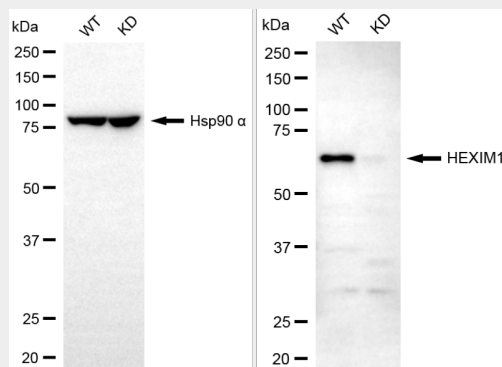
- [Western Blot](#)
- [Blocking Peptides](#)
- [Dot Blot](#)
- [Immunohistochemistry](#)
- [Immunofluorescence](#)
- [Immunoprecipitation](#)
- [Flow Cytometry](#)
- [Cell Culture](#)

## KD-Validated Anti-HEXIM1 Mouse Monoclonal Antibody - Images

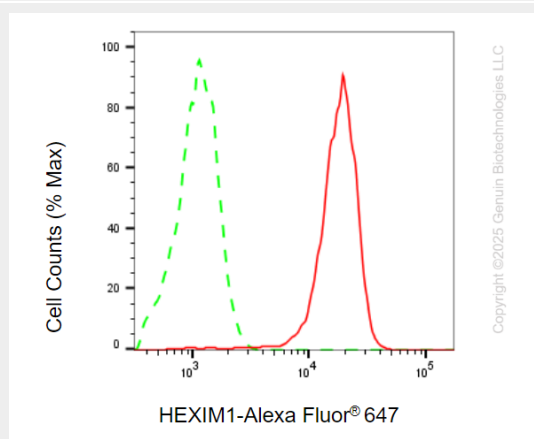


Copyright ©2025 Genuin Biotechnologies LLC

Western blotting analysis using anti-HEXIM1 antibody (Cat#AGI2221). Total cell lysates (30  $\mu$ g) from various cell lines were loaded and separated by SDS-PAGE. The blot was incubated with anti-HEXIM1 antibody (Cat#AGI2221, 1:2,000) and HRP-conjugated goat anti-mouse secondary antibody respectively.



Western blotting analysis using anti-HEXIM1 antibody (Cat#AGI2221). HEXIM1 expression in wild-type (WT) and HEXIM1 knockdown (KD) HSHC cells with 20  $\mu$ g of total cell lysates. Hsp90  $\alpha$  serves as a loading control. The blot was incubated with anti-HEXIM1 antibody (Cat#AGI2221, 1:2,000) and HRP-conjugated goat anti-mouse secondary antibody respectively.



Flow cytometric analysis of HEXIM1 expression in HepG2 cells using anti-HEXIM1 antibody (Cat#AGI2221, 1:2,000). Green, isotype control; red, HEXIM1.