

KD-Validated Anti-RALY Mouse Oligoclonal Antibody
Mouse oligoclonal antibody
Catalog # AGI2224**Specification****KD-Validated Anti-RALY Mouse Oligoclonal Antibody - Product Information**

Application	WB, FC, ICC
Primary Accession	Q9UKM9
Reactivity	Human
Clonality	Oligoclonal
Isotype	Mouse IgG
Calculated MW	Predicted, 32 kDa; observed, 37 kDa kDa
Gene Name	RALY
Aliases	RALY; RALY Heterogeneous Nuclear Ribonucleoprotein; HNRPCL2; P542; RNA-Binding Protein (Autoantigenic, HnRNP-Associated With Lethal Yellow); HnRNP Associated With Lethal Yellow Protein Homolog; Heterogeneous Nuclear Ribonucleoprotein C-Like 2; HnRNP Core Protein C-Like 2; RNA-Binding Protein Raly; Autoantigen P542; RNA Binding Protein, Autoantigenic (HnRNP-Associated With Lethal Yellow Homolog (Mouse)); RNA Binding Protein, Autoantigenic (HnRNP-Associated With Lethal Yellow Homolog); RNA-Binding Protein (Autoantigenic)
Immunogen	Recombinant protein of human RALY

KD-Validated Anti-RALY Mouse Oligoclonal Antibody - Additional Information

Gene ID	22913
Other Names	RNA-binding protein Raly, Autoantigen p542, Heterogeneous nuclear ribonucleoprotein C-like 2, hnRNP core protein C-like 2, hnRNP associated with lethal yellow protein homolog, RALY, HNRPCL2, P542

KD-Validated Anti-RALY Mouse Oligoclonal Antibody - Protein Information**Name** RALY**Synonyms** HNRPCL2, P542**Function**

RNA-binding protein that acts as a transcriptional cofactor for cholesterol biosynthetic genes in the liver. Binds the lipid- responsive non-coding RNA LeXis and is required for LeXis-mediated effect on cholesterologenesis (By similarity). May be a heterogeneous nuclear ribonucleoprotein (hnRNP)

(PubMed:9376072).

Cellular Location

Nucleus {ECO:0000250|UniProtKB:Q64012}.

Tissue Location

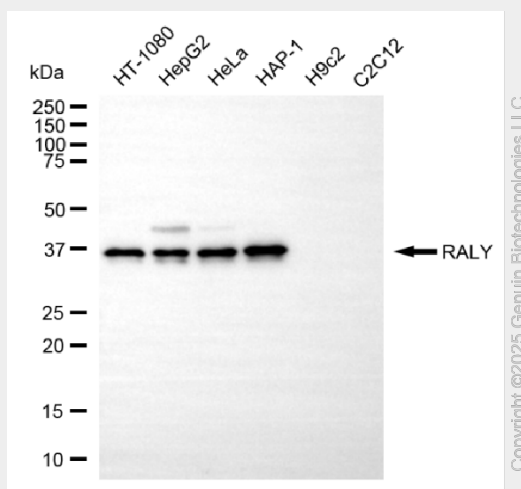
Expressed in heart, brain, lung, liver, skeletal muscle, kidney and pancreas. Weakly expressed in placenta

KD-Validated Anti-RALY Mouse Oligoclonal Antibody - Protocols

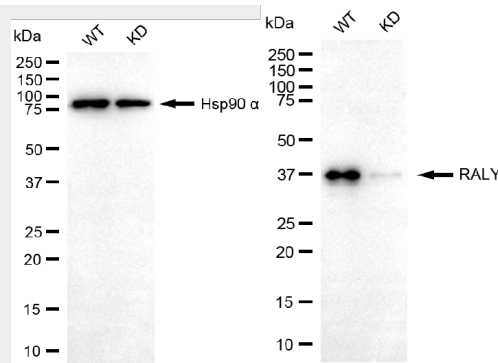
Provided below are standard protocols that you may find useful for product applications.

- [Western Blot](#)
- [Blocking Peptides](#)
- [Dot Blot](#)
- [Immunohistochemistry](#)
- [Immunofluorescence](#)
- [Immunoprecipitation](#)
- [Flow Cytometry](#)
- [Cell Culture](#)

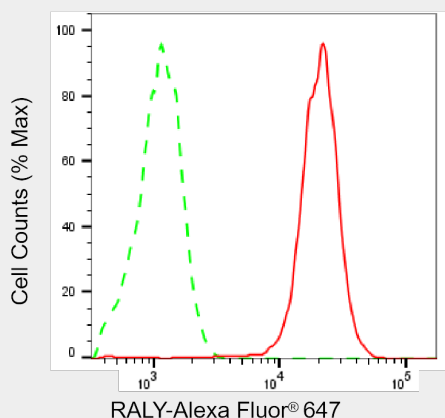
KD-Validated Anti-RALY Mouse Oligoclonal Antibody - Images



Western blotting analysis using anti-RALY antibody (Cat#AGI2224). Total cell lysates (30 µg) from various cell lines were loaded and separated by SDS-PAGE. The blot was incubated with anti-RALY antibody (Cat#AGI2224, 1:2,500) and HRP-conjugated goat anti-mouse secondary antibody respectively.



Copyright ©2025 Genuin Biotechnologies LLC



Copyright ©2025 Genuin Biotechnologies LLC

