

KD-Validated Anti-ADD1 Mouse Oligoclonal Antibody
Mouse oligoclonal antibody
Catalog # AGI2225**Specification**

KD-Validated Anti-ADD1 Mouse Oligoclonal Antibody - Product Information

Application	WB, FC
Primary Accession	P35611
Reactivity	Rat, Human
Clonality	Oligoclonal
Isotype	Mouse IgG
Calculated MW	Predicted, 81 kDa; observed, 120 kDa KDa
Gene Name	ADD1
Aliases	ADD1; Adducin 1; Alpha-Adducin; Adducin 1 (Alpha); ADDA; Erythrocyte Adducin Alpha Subunit; Erythrocyte Adducin Subunit Alpha; Alpha-Adducin 1
Immunogen	Recombinant protein of human ADD1

KD-Validated Anti-ADD1 Mouse Oligoclonal Antibody - Additional Information

Gene ID	118
Other Names	
Alpha-adducin, Erythrocyte adducin subunit alpha, ADD1, ADDA	

KD-Validated Anti-ADD1 Mouse Oligoclonal Antibody - Protein Information**Name** ADD1**Synonyms** ADDA**Function**

Membrane-cytoskeleton-associated protein that promotes the assembly of the spectrin-actin network. Binds to calmodulin.

Cellular Location

Cytoplasm, cytoskeleton. Cell membrane; Peripheral membrane protein; Cytoplasmic side

Tissue Location

Expressed in all tissues. Found in much higher levels in reticulocytes than the beta subunit

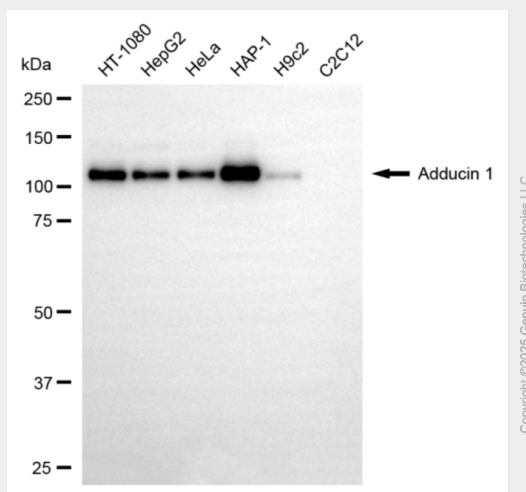
KD-Validated Anti-ADD1 Mouse Oligoclonal Antibody - Protocols

Provided below are standard protocols that you may find useful for product applications.

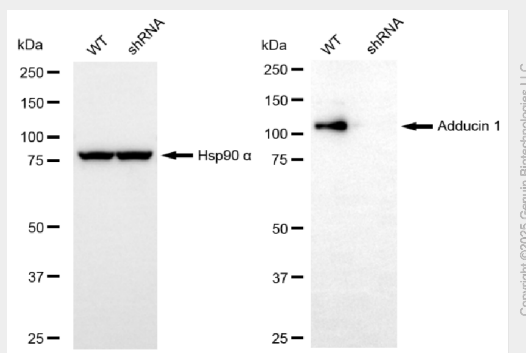
- [Western Blot](#)

- [Blocking Peptides](#)
- [Dot Blot](#)
- [Immunohistochemistry](#)
- [Immunofluorescence](#)
- [Immunoprecipitation](#)
- [Flow Cytometry](#)
- [Cell Culture](#)

KD-Validated Anti-ADD1 Mouse Oligoclonal Antibody - Images



Western blotting analysis using anti-adducin 1 antibody (Cat#AGI2225). Total cell lysates (30 µg) from various cell lines were loaded and separated by SDS-PAGE. The blot was incubated with anti-adducin 1 antibody (Cat#AGI2225, 1:2,500) and HRP-conjugated goat anti-mouse secondary antibody respectively.



Western blotting analysis using anti-adducin 1 antibody (Cat#AGI2225). Adducin 1 expression in wild-type (WT) and adducin 1 (ADD1) shRNA knockdown (KD) HT-1080 cells with 20 µg of total cell lysates. Hsp90 α serves as a loading control. The blot was incubated with anti-adducin 1 antibody (Cat#AGI2225, 1:2,500) and HRP-conjugated goat anti-mouse secondary antibody respectively.