

KD-Validated Anti-TXLNA Mouse Oligoclonal Antibody
Mouse oligoclonal antibody
Catalog # AGI2226**Specification**

KD-Validated Anti-TXLNA Mouse Oligoclonal Antibody - Product Information

Application	WB, FC, ICC
Primary Accession	P40222
Reactivity	Human
Clonality	Oligoclonal
Isotype	Mouse IgG
Calculated MW	Predicted, 62 kDa; observed, 74 kDa KDa
Gene Name	TXLNA
Aliases	TXLNA; Taxilin Alpha; IL-14; IL14; Interleukin 14; DKFZp451J0118; Alpha-Taxilin; TXLN
Immunogen	Recombinant protein of human TXLNA

KD-Validated Anti-TXLNA Mouse Oligoclonal Antibody - Additional Information

Gene ID	200081
Other Names	
Alpha-taxilin, TXLNA, TXLN	

KD-Validated Anti-TXLNA Mouse Oligoclonal Antibody - Protein Information**Name** TXLNA**Synonyms** TXLN**Function**

May be involved in intracellular vesicle traffic and potentially in calcium-dependent exocytosis in neuroendocrine cells.

Tissue Location

Ubiquitous, with much higher expression in heart, kidney, liver and pancreas.

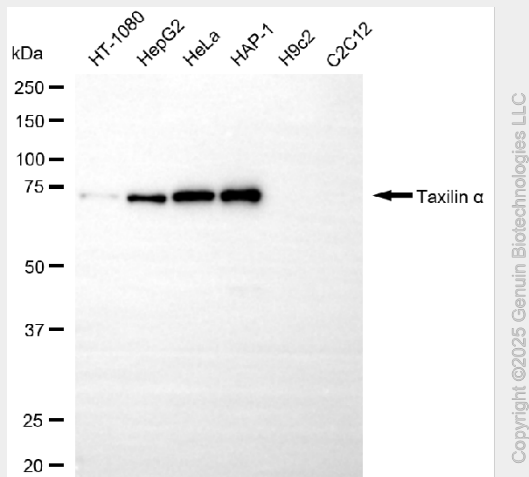
KD-Validated Anti-TXLNA Mouse Oligoclonal Antibody - Protocols

Provided below are standard protocols that you may find useful for product applications.

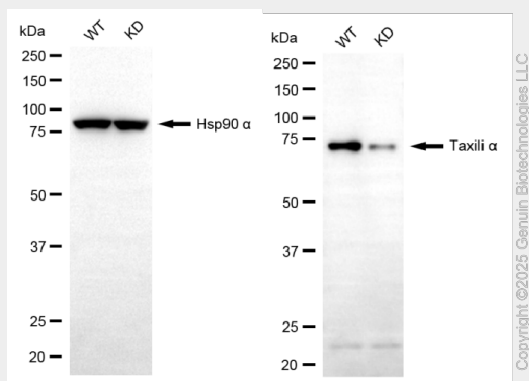
- [Western Blot](#)
- [Blocking Peptides](#)
- [Dot Blot](#)
- [Immunohistochemistry](#)
- [Immunofluorescence](#)

- [Immunoprecipitation](#)
- [Flow Cytometry](#)
- [Cell Culture](#)

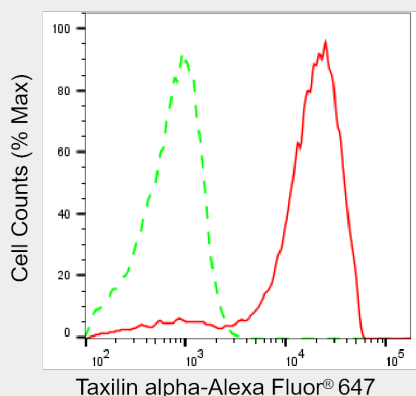
KD-Validated Anti-TXLNA Mouse Oligoclonal Antibody - Images



Western blotting analysis using anti-taxilin alpha antibody (Cat#AGI2226). Total cell lysates (30 μ g) from various cell lines were loaded and separated by SDS-PAGE. The blot was incubated with anti-taxilin alpha antibody (Cat#AGI2226, 1:2,500) and HRP-conjugated goat anti-mouse secondary antibody respectively.

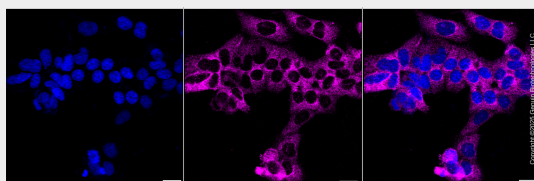


Western blotting analysis using anti-taxilin alpha antibody (Cat#AGI2226). Taxilin alpha expression in wild-type (WT) and taxilin alpha (TXLNA) knockdown (KD) HeLa cells with 20 μ g of total cell lysates. Hsp90 α serves as a loading control. The blot was incubated with anti-taxilin alpha antibody (Cat#AGI2226, 1:2,500) and HRP-conjugated goat anti-mouse secondary antibody respectively.



Copyright ©2025 Genuin Biotechnologies LLC

Flow cytometric analysis of Taxilin alpha expression in HAP-1 cells using anti-Taxilin alpha antibody (Cat#AGI2226, 1:2,000). Green, isotype control; red, Taxilin alpha.



Immunocytochemical staining of HAP-1 cells with anti-Taxilin alpha antibody (Cat#AGI2226, 1:1,000). Nuclei were stained blue with DAPI; Taxilin alpha was stained magenta with Alexa Fluor® 647. Images were taken using Leica stellaris 5. Protein abundance based on laser Intensity and smart gain: Medium. Scale bar, 20 μ m.