

KD-Validated Anti-SP3 Mouse Oligoclonal Antibody
Mouse oligoclonal antibody
Catalog # AGI2227**Specification**

KD-Validated Anti-SP3 Mouse Oligoclonal Antibody - Product Information

Application	WB
Primary Accession	Q02447
Reactivity	Rat, Human, Mouse
Clonality	Oligoclonal
Isotype	Mouse IgG
Calculated MW	Predicted, 82 kDa; observed, 70,115kDa
Gene Name	KDa
Aliases	SP3
	SP3; Sp3 Transcription Factor; SPR-2; Transcription Factor Sp3; GC-Binding Transcription Factor Sp3; Specificity Protein 3; SPR2
Immunogen	Recombinant protein of human SP3

KD-Validated Anti-SP3 Mouse Oligoclonal Antibody - Additional Information

Gene ID	6670
Other Names	
Transcription factor Sp3, SPR-2, SP3	

KD-Validated Anti-SP3 Mouse Oligoclonal Antibody - Protein Information**Name** SP3**Function**

Transcriptional factor that can act as an activator or repressor depending on isoform and/or post-translational modifications. Binds to GT and GC boxes promoter elements. Competes with SP1 for the GC-box promoters. Weak activator of transcription but can activate a number of genes involved in different processes such as cell-cycle regulation, hormone-induction and house-keeping.

Cellular Location

Nucleus. Nucleus, PML body. Note=Localizes to the nuclear periphery and in nuclear dots when sumoylated. Some localization in PML nuclear bodies

Tissue Location

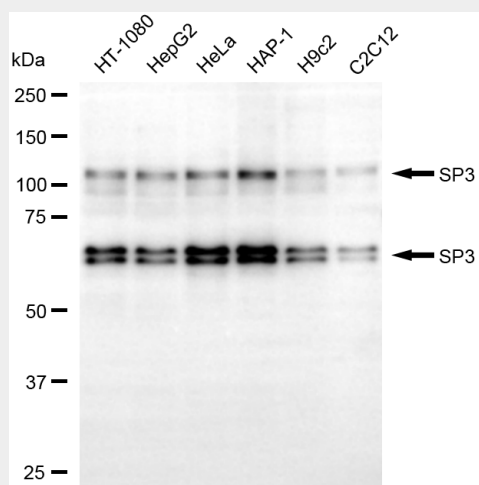
Ubiquitously expressed.

KD-Validated Anti-SP3 Mouse Oligoclonal Antibody - Protocols

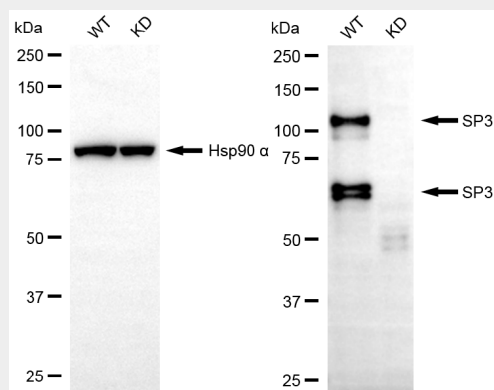
Provided below are standard protocols that you may find useful for product applications.

- [Western Blot](#)
- [Blocking Peptides](#)
- [Dot Blot](#)
- [Immunohistochemistry](#)
- [Immunofluorescence](#)
- [Immunoprecipitation](#)
- [Flow Cytometry](#)
- [Cell Culture](#)

KD-Validated Anti-SP3 Mouse Oligoclonal Antibody - Images



Western blotting analysis using anti-SP3 antibody (Cat#AGI2227). Total cell lysates (30 µg) from various cell lines were loaded and separated by SDS-PAGE. The blot was incubated with anti-SP3 antibody (Cat#AGI2227, 1:2,500) and HRP-conjugated goat anti-mouse secondary antibody respectively.



Western blotting analysis using anti-SP3 antibody (Cat#AGI2227). SP3 expression in wild-type (WT) and SP3 knockdown (KD) HeLa cells with 20 µg of total cell lysates. Hsp90 α serves as a loading control. The blot was incubated with anti-SP3 antibody (Cat#AGI2227, 1:2,500) and HRP-conjugated goat anti-mouse secondary antibody respectively.