

**KD-Validated Anti-ZC3HC1 Mouse Oligoclonal Antibody**  
**Mouse oligoclonal antibody**  
**Catalog # AGI2228****Specification**

---

**KD-Validated Anti-ZC3HC1 Mouse Oligoclonal Antibody - Product Information**

Application	WB, FC
Primary Accession	<a href="#">Q86WB0</a>
Reactivity	Human, Mouse
Clonality	Oligoclonal
Isotype	Mouse IgG
Calculated MW	Predicted, 55 kDa; observed, 55 kDa kDa
Gene Name	ZC3HC1
Aliases	ZC3HC1; Zinc Finger C3HC-Type Containing 1; NIPA; Nuclear-Interacting Partner Of ALK; Zinc Finger C3HC-Type Protein 1; Nuclear Interacting Partner Of Anaplastic Lymphoma Kinase (ALK); Nuclear-Interacting Partner Of Anaplastic Lymphoma Kinase; Hematopoietic Stem/Progenitor Cell Protein 216; Nuclear Interaction Partner Of ALK; HSPC216; HNIPA
Immunogen	Recombinant protein of human ZC3HC1

**KD-Validated Anti-ZC3HC1 Mouse Oligoclonal Antibody - Additional Information**

Gene ID	51530
<b>Other Names</b>	
Zinc finger C3HC-type protein 1, Nuclear-interacting partner of ALK, hNIPA, Nuclear-interacting partner of anaplastic lymphoma kinase, ZC3HC1 ( <a href="http://www.genenames.org/cgi-bin/gene_symbol_report?hgnc_id=29913" target="_blank">http://www.genenames.org/cgi-bin/gene_symbol_report?hgnc_id=29913</a> )	
target="_blank">HGNC:29913</a>)	

**KD-Validated Anti-ZC3HC1 Mouse Oligoclonal Antibody - Protein Information****Name** ZC3HC1 ([HGNC:29913](#))**Function**

Required for proper positioning of a substantial amount of TPR at the nuclear basket (NB) through interaction with TPR.

**Cellular Location**

Nucleus. Nucleus envelope. Note=Resident of the nuclear basket (NB) (PubMed:34440706). Occurs at the nuclear envelopes (NE) of all TPR-containing cell types, including proliferating and non-dividing, terminally differentiated cells of different morphogenetic origin (PubMed:34440706).

**Tissue Location**

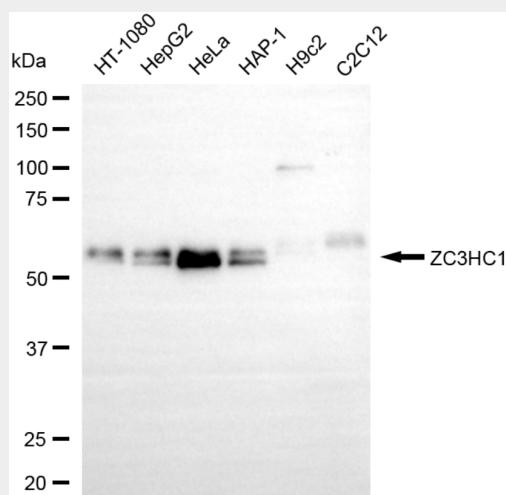
Widely expressed. Highly expressed in heart, skeletal muscle and testis. Expressed in brain, placenta, lung, kidney, liver, pancreas, spleen, thymus, prostate, ovary small intestine and colon. Weakly or not expressed in leukocytes

## KD-Validated Anti-ZC3HC1 Mouse Oligoclonal Antibody - Protocols

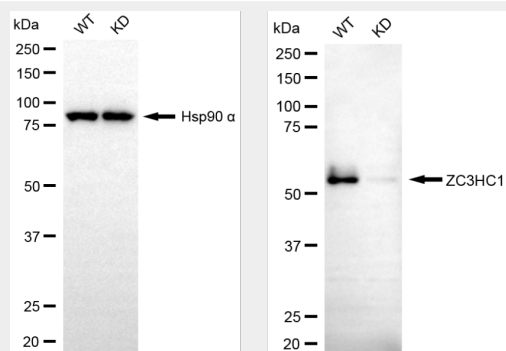
Provided below are standard protocols that you may find useful for product applications.

- [Western Blot](#)
- [Blocking Peptides](#)
- [Dot Blot](#)
- [Immunohistochemistry](#)
- [Immunofluorescence](#)
- [Immunoprecipitation](#)
- [Flow Cytometry](#)
- [Cell Culture](#)

## KD-Validated Anti-ZC3HC1 Mouse Oligoclonal Antibody - Images

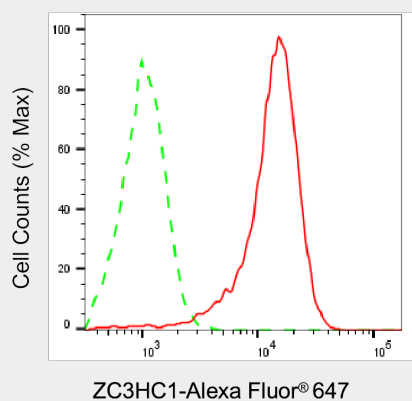


Western blotting analysis using anti-ZC3HC1 antibody (Cat#AGI2228). Total cell lysates (30 µg) from various cell lines were loaded and separated by SDS-PAGE. The blot was incubated with anti-ZC3HC1 antibody (Cat#AGI2228, 1:1,000) and HRP-conjugated goat anti-mouse secondary antibody respectively.



Western blotting analysis using anti-ZC3HC1 antibody (Cat#AGI2228). ZC3HC1 expression in wild-type (WT) and ZC3HC1 knockdown (KD) HSHC cells with 30 µg of total cell lysates. Hsp90 α serves as a loading control. The blot was incubated with anti-ZC3HC1 antibody (Cat#AGI2228,

1:1,000) and HRP-conjugated goat anti-mouse secondary antibody respectively.



Flow cytometric analysis of ZC3HC1 expression in HeLa cells using anti-ZC3HC1 antibody (Cat#AGI2228, 1:2,000). Green, isotype control; red, ZC3HC1.