

KD-Validated Anti-H1-3 Rabbit Monoclonal Antibody
Rabbit monoclonal antibody
Catalog # AGI2230**Specification**

KD-Validated Anti-H1-3 Rabbit Monoclonal Antibody - Product Information

Application	WB
Primary Accession	P16402
Reactivity	Human
Clonality	Monoclonal
Isotype	Rabbit IgG
Calculated MW	Predicted, 22 kDa; observed, 31 kDa KDa
Gene Name	H1-3
Aliases	H1-3; H1.3 Linker Histone, Cluster Member; HIST1H1D; H1s-2; H1.3; H1F3; H1d; Histone Cluster 1 H1 Family Member D; H1 Histone Family, Member 3; Histone Cluster 1, H1d; Histone 1, H1d; Histone H1s-2 ;Histone H1.3; Histone H1c
Immunogen	A synthesized peptide derived from human Histone H1.3

KD-Validated Anti-H1-3 Rabbit Monoclonal Antibody - Additional Information

Gene ID	3007
Other Names	
Histone H1.3, Histone H1c, Histone H1s-2, H1-3 (HGNC:4717)	

KD-Validated Anti-H1-3 Rabbit Monoclonal Antibody - Protein Information**Name** H1-3 ([HGNC:4717](#))**Function**

Histone H1 protein binds to linker DNA between nucleosomes forming the macromolecular structure known as the chromatin fiber. Histones H1 are necessary for the condensation of nucleosome chains into higher-order structured fibers. Also acts as a regulator of individual gene transcription through chromatin remodeling, nucleosome spacing and DNA methylation (By similarity).

Cellular Location

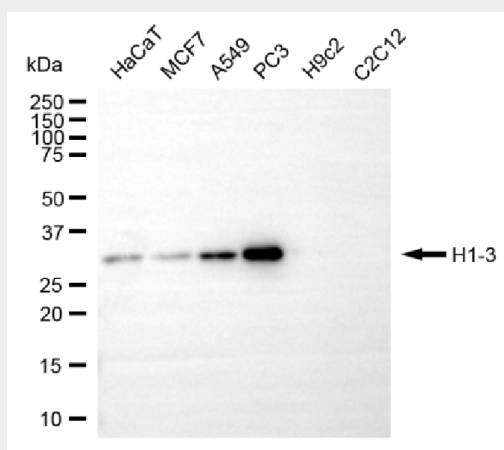
Nucleus. Chromosome. Note=According to PubMed:15911621 more commonly found in euchromatin. According to PubMed:10997781 is associated with inactive chromatin

KD-Validated Anti-H1-3 Rabbit Monoclonal Antibody - Protocols

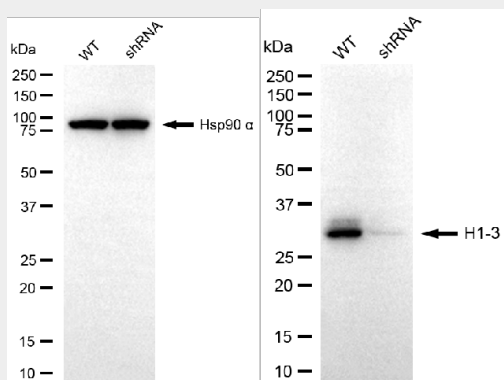
Provided below are standard protocols that you may find useful for product applications.

- [Western Blot](#)
- [Blocking Peptides](#)
- [Dot Blot](#)
- [Immunohistochemistry](#)
- [Immunofluorescence](#)
- [Immunoprecipitation](#)
- [Flow Cytometry](#)
- [Cell Culture](#)

KD-Validated Anti-H1-3 Rabbit Monoclonal Antibody - Images



Western blotting analysis using anti-H1-3 antibody (Cat#AGI2230). Total cell lysates (30 µg) from various cell lines were loaded and separated by SDS-PAGE. The blot was incubated with anti-H1-3 antibody (Cat#AGI2230, 1:5,000) and HRP-conjugated goat anti-rabbit secondary antibody respectively.



Western blotting analysis using anti-H1-3 antibody (Cat#AGI2230). H1-3 expression in wild-type (WT) and H1-3 shRNA knockdown (KD) HeLa cells with 20 µg of total cell lysates. Hsp90 α serves as a loading control. The blot was incubated with anti-H1-3 antibody (Cat#AGI2230, 1:5,000) and HRP-conjugated goat anti-rabbit secondary antibody respectively.