

**KD-Validated Anti-Malic Enzyme 2 Rabbit Monoclonal Antibody**  
**Rabbit monoclonal antibody**  
**Catalog # AGI2231****Specification**

---

**KD-Validated Anti-Malic Enzyme 2 Rabbit Monoclonal Antibody - Product Information**

Application	WB
Primary Accession	<a href="#">P23368</a>
Reactivity	Human
Clonality	Monoclonal
Isotype	Rabbit IgG
Calculated MW	Predicted, 65 kDa; observed, 58 kDa
Gene Name	ME2
Aliases	ME2; Malic Enzyme 2; NAD-Dependent Malic Enzyme, Mitochondrial; Malate Dehydrogenase (Oxaloacetate-Decarboxylating); Malic Enzyme 2, NAD(+)-Dependent, Mitochondrial; NAD-ME; Pyruvic-Malic Carboxylase; EC 1.1.1.38; EC 1.1.1; ODS1
Immunogen	A synthesized peptide derived from human ME2

**KD-Validated Anti-Malic Enzyme 2 Rabbit Monoclonal Antibody - Additional Information**

Gene ID	4200
<b>Other Names</b>	
NAD-dependent malic enzyme, mitochondrial, NAD-ME, 1.1.1.38, Malic enzyme 2, ME2	

**KD-Validated Anti-Malic Enzyme 2 Rabbit Monoclonal Antibody - Protein Information****Name** ME2**Function**

NAD-dependent mitochondrial malic enzyme that catalyzes the oxidative decarboxylation of malate to pyruvate.

**Cellular Location**

Mitochondrion matrix

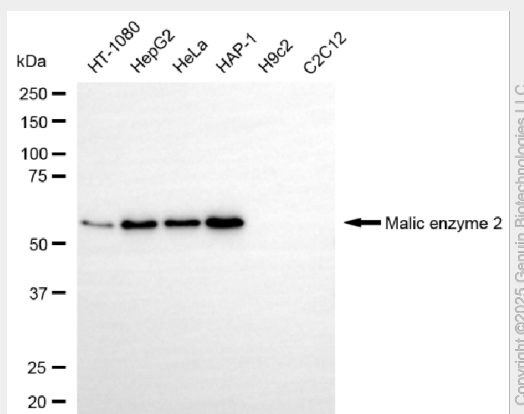
**KD-Validated Anti-Malic Enzyme 2 Rabbit Monoclonal Antibody - Protocols**

Provided below are standard protocols that you may find useful for product applications.

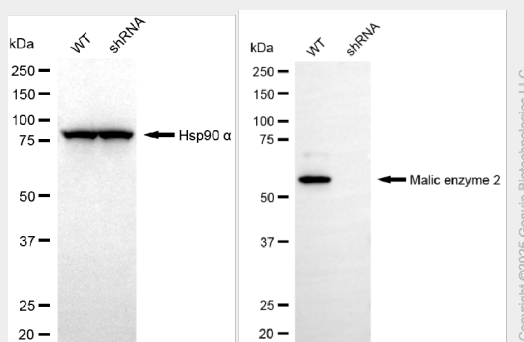
- [Western Blot](#)
- [Blocking Peptides](#)

- [Dot Blot](#)
- [Immunohistochemistry](#)
- [Immunofluorescence](#)
- [Immunoprecipitation](#)
- [Flow Cytometry](#)
- [Cell Culture](#)

## KD-Validated Anti-Malic Enzyme 2 Rabbit Monoclonal Antibody - Images



Western blotting analysis using anti-malic enzyme 2 antibody (Cat#AGI2231). Total cell lysates (30 µg) from various cell lines were loaded and separated by SDS-PAGE. The blot was incubated with anti-malic enzyme 2 antibody (Cat#AGI2231, 1:5,000) and HRP-conjugated goat anti-rabbit secondary antibody respectively.



Western blotting analysis using anti-malic enzyme 2 antibody (Cat#AGI2231). Malic enzyme 2 expression in wild-type (WT) and malic enzyme 2 (ME2) shRNA knockdown (KD) HeLa cells with 20 µg of total cell lysates. Hsp90 α serves as a loading control. The blot was incubated with anti-malic enzyme 2 antibody (Cat#AGI2231, 1:5,000) and HRP-conjugated goat anti-rabbit secondary antibody respectively.