

**KD-Validated Anti-MRPS26 Rabbit Monoclonal Antibody**  
**Rabbit monoclonal antibody**  
**Catalog # AGI2232****Specification**

---

**KD-Validated Anti-MRPS26 Rabbit Monoclonal Antibody - Product Information**

Application	WB
Primary Accession	<a href="#">Q9BYN8</a>
Reactivity	Human
Clonality	Monoclonal
Isotype	Rabbit IgG
Calculated MW	Predicted, 24 kDa; observed, 24 kDa kDa
Gene Name	MRPS26
Aliases	MRPS26; Mitochondrial Ribosomal Protein S26; MRP-S13; MRP-S26; RPMS13; DJ534B8.3; C20orf193; MS26; 28S Ribosomal Protein S13, Mitochondrial; 28S Ribosomal Protein S26, Mitochondrial; Small Ribosomal Subunit Protein MS26; S13mt; S26mt; Serologically Defined Breast Cancer Antigen NY-BR-87; Mitochondrial Small Ribosomal Subunit Protein MS26; Chromosome 20 Open Reading Frame 193; NY-BR-87; MRPS13; GI008
Immunogen	Recombinant protein of human MRPS26

**KD-Validated Anti-MRPS26 Rabbit Monoclonal Antibody - Additional Information**

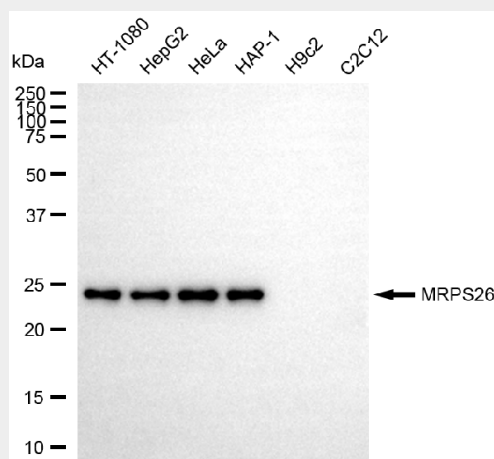
Gene ID	64949
<b>Other Names</b>	
Small ribosomal subunit protein mS26, 28S ribosomal protein S13, mitochondrial, MRP-S13, S13mt, 28S ribosomal protein S26, mitochondrial, MRP-S26, S26mt, MRPS26, C20orf193, RPMS13	

**KD-Validated Anti-MRPS26 Rabbit Monoclonal Antibody - Protein Information****Name** MRPS26**Synonyms** C20orf193, RPMS13**Cellular Location**  
Mitochondrion.**KD-Validated Anti-MRPS26 Rabbit Monoclonal Antibody - Protocols**

Provided below are standard protocols that you may find useful for product applications.

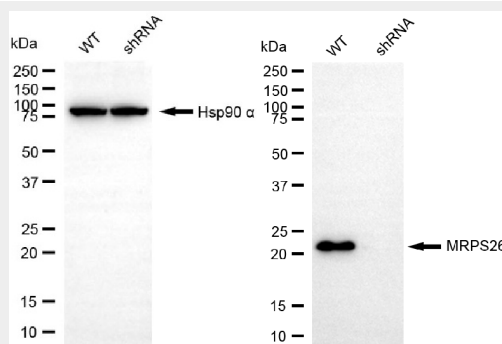
- [Western Blot](#)
- [Blocking Peptides](#)
- [Dot Blot](#)
- [Immunohistochemistry](#)
- [Immunofluorescence](#)
- [Immunoprecipitation](#)
- [Flow Cytometry](#)
- [Cell Culture](#)

## KD-Validated Anti-MRPS26 Rabbit Monoclonal Antibody - Images



Copyright ©2025 Genuin Biotechnologies LLC

Western blotting analysis using anti-MRPS26 antibody (Cat#AGI2232). Total cell lysates (30 µg) from various cell lines were loaded and separated by SDS-PAGE. The blot was incubated with anti-MRPS26 antibody (Cat#AGI2232, 1:5,000) and HRP-conjugated goat anti-rabbit secondary antibody respectively.



Copyright ©2025 Genuin Biotechnologies LLC

Western blotting analysis using anti-MRPS26 antibody (Cat#AGI2232). MRPS26 expression in wild-type (WT) and MRPS26 shRNA knockdown (KD) HeLa cells with 20 µg of total cell lysates. Hsp90 α serves as a loading control. The blot was incubated with anti-MRPS26 antibody (Cat#AGI2232, 1:5,000) and HRP-conjugated goat anti-rabbit secondary antibody respectively.