

KD-Validated Anti-Phospho-KIF22 (S427) Rabbit Monoclonal Antibody
Rabbit monoclonal antibody
Catalog # AGI2240**Specification****KD-Validated Anti-Phospho-KIF22 (S427) Rabbit Monoclonal Antibody - Product Information**

Application	WB, ICC
Primary Accession	Q14807
Reactivity	Human
Clonality	Monoclonal
Isotype	Rabbit IgG
Calculated MW	Predicted, 73 kDa; observed, 73 kDa kDa
Gene Name	KIF22
Aliases	KIF22; Kinesin Family Member 22; OBP-1; OBP-2; KNSL4; Kid; Kinesin-Like Protein KIF22; Kinesin-Like Protein 4; Origin Of Plasmid DNA Replication-Binding Protein; Kinesin-Like DNA-Binding Protein Pseudogene; Kinesin-Like DNA-Binding Protein; OriP Binding Protein; Kinesin-Like 4; A-328A3.2; SEMDJL2; OBP; KID
Immunogen	A synthesized peptide derived from human KIF22 around the phosphorylation site of S427

KD-Validated Anti-Phospho-KIF22 (S427) Rabbit Monoclonal Antibody - Additional Information

Gene ID	3835
Other Names	
Kinesin-like protein KIF22, Kinesin-like DNA-binding protein, Kinesin-like protein 4, KIF22, KID, KNSL4	

KD-Validated Anti-Phospho-KIF22 (S427) Rabbit Monoclonal Antibody - Protein Information**Name** KIF22**Synonyms** KID, KNSL4**Function**

Kinesin family member that is involved in spindle formation and the movements of chromosomes during mitosis and meiosis. Binds to microtubules and to DNA (By similarity). Plays a role in congression of laterally attached chromosomes in NDC80-depleted cells (PubMed:25743205).

Cellular Location

Nucleus. Cytoplasm, cytoskeleton

Tissue Location

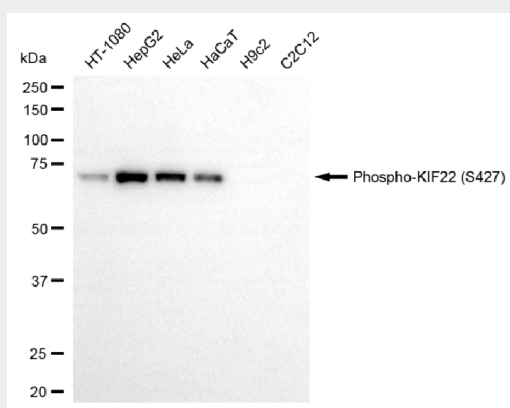
Expressed in bone, cartilage, joint capsule, ligament, skin, and primary cultured chondrocytes

KD-Validated Anti-Phospho-KIF22 (S427) Rabbit Monoclonal Antibody - Protocols

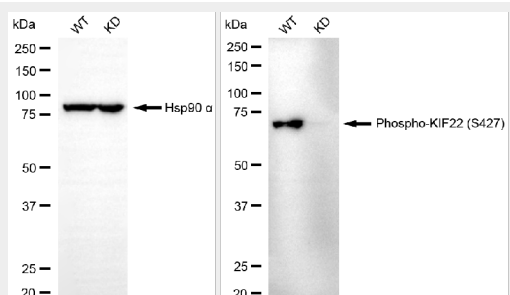
Provided below are standard protocols that you may find useful for product applications.

- [Western Blot](#)
- [Blocking Peptides](#)
- [Dot Blot](#)
- [Immunohistochemistry](#)
- [Immunofluorescence](#)
- [Immunoprecipitation](#)
- [Flow Cytometry](#)
- [Cell Culture](#)

KD-Validated Anti-Phospho-KIF22 (S427) Rabbit Monoclonal Antibody - Images

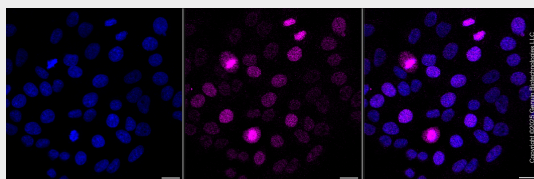


Western blotting analysis using anti-phospho-KIF22 (S427) antibody (Cat#65473). Total cell lysates (30 µg) from various cell lines were loaded and separated by SDS-PAGE. The blot was incubated with anti-phospho-KIF22 (S427) antibody (Cat#65473, 1:5,000) and HRP-conjugated goat anti-rabbit secondary antibody (Cat#201, 1:20,000) respectively. Image was developed using FeQ™ ECL Substrate Kit (Cat#226).



Western blotting analysis using anti-phospho-KIF22 (S427) antibody (Cat#65473). Phospho-KIF22 (S427) expression in wild-type (WT) and KIF22 shRNA knockdown (KD) HT-1080 cells with 30 µg of total cell lysates. Hsp90 α serves as a loading control. The blot was incubated with anti-phospho-KIF22 (S427) antibody (Cat#65473, 1:5,000) and HRP-conjugated goat anti-rabbit secondary antibody (Cat#201, 1:20,000) respectively. Image was developed using FeQ™ ECL Substrate Kit (Cat#226).

Substrate Kit (Cat#226).



Immunocytochemical staining of HepG2 cells with anti-Phospho-KIF22 (S427) antibody (Cat#65473, 1:1,000). Nuclei were stained blue with DAPI; Phospho-KIF22 (S427) was stained magenta with Alexa Fluor® 647. Images were taken using Leica stellaris 5. Protein abundance based on laser Intensity and smart gain: Medium. Scale bar, 20 μ m.