

KD-Validated Anti-UCH L5 Rabbit Monoclonal Antibody
Rabbit monoclonal antibody
Catalog # AGI2242**Specification****KD-Validated Anti-UCH L5 Rabbit Monoclonal Antibody - Product Information**

Application	WB, FC, ICC
Primary Accession	Q9Y5K5
Reactivity	Rat, Human
Clonality	Monoclonal
Isotype	Rabbit IgG
Calculated MW	Predicted, 38 kDa; observed, 33,38 kDa
Gene Name	UCHL5
Aliases	UCHL5; Ubiquitin C-Terminal Hydrolase L5; UCH37; CGI-70; INO80R; Ubiquitin Carboxyl-Terminal Hydrolase Isozyme L5; Ubiquitin Carboxyl-Terminal Hydrolase L5; Ubiquitin C-Terminal Hydrolase UCH37; Ubiquitin Thioesterase L5; INO80 Complex Subunit R; EC 3.4.19.12; UCH-L5; Ubiquitin Carboxyl-Terminal Esterase L5
Immunogen	A synthesized peptide derived from human UCH L5

KD-Validated Anti-UCH L5 Rabbit Monoclonal Antibody - Additional Information

Gene ID	51377
Other Names	Ubiquitin carboxyl-terminal hydrolase isozyme L5, UCH-L5, 3.4.19.12, Ubiquitin C-terminal hydrolase UCH37, Ubiquitin thioesterase L5, UCHL5, UCH37

KD-Validated Anti-UCH L5 Rabbit Monoclonal Antibody - Protein Information**Name** UCHL5**Synonyms** UCH37**Function**

Protease that specifically cleaves 'Lys-48'-linked polyubiquitin chains. Deubiquitinating enzyme associated with the 19S regulatory subunit of the 26S proteasome. Putative regulatory component of the INO80 complex; however is inactive in the INO80 complex and is activated by a transient interaction of the INO80 complex with the proteasome via ADRM1.

Cellular Location

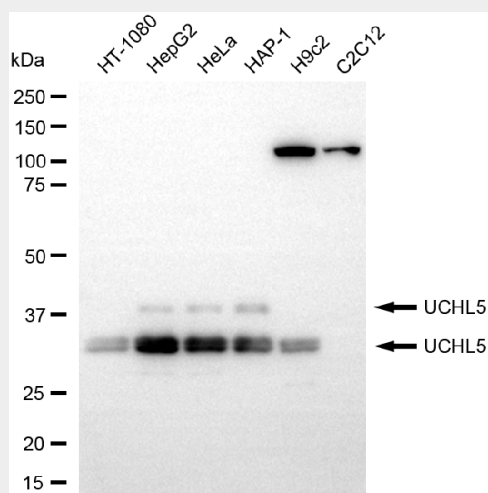
Cytoplasm. Nucleus. Note=Associates with the proteasome 19S subunit in the cytoplasm. Associates with the INO80 complex in the nucleus

KD-Validated Anti-UCH L5 Rabbit Monoclonal Antibody - Protocols

Provided below are standard protocols that you may find useful for product applications.

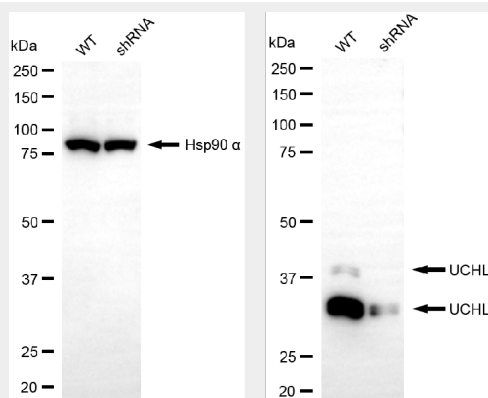
- [Western Blot](#)
- [Blocking Peptides](#)
- [Dot Blot](#)
- [Immunohistochemistry](#)
- [Immunofluorescence](#)
- [Immunoprecipitation](#)
- [Flow Cytometry](#)
- [Cell Culture](#)

KD-Validated Anti-UCH L5 Rabbit Monoclonal Antibody - Images



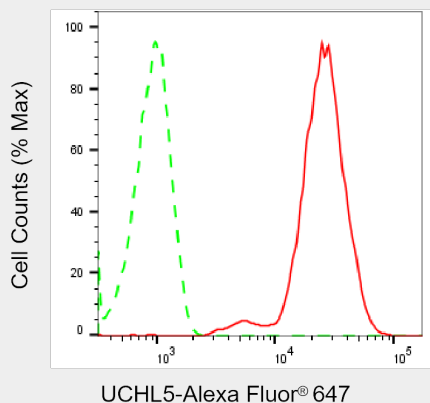
Copyright ©2025 Genuin Biotechnologies LLC

Western blotting analysis using anti-UCHL5 antibody (Cat#AGI2242). Total cell lysates (30 µg) from various cell lines were loaded and separated by SDS-PAGE. The blot was incubated with anti-UCHL5 antibody (Cat#AGI2242, 1:5,000) and HRP-conjugated goat anti-rabbit secondary antibody respectively.

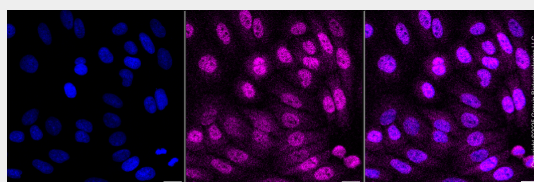


Copyright ©2025 Genuin Biotechnologies LLC

Western blotting analysis using anti-UCHL5 antibody (Cat#AGI2242). UCHL5 expression in wild-type (WT) and UCHL5 shRNA knockdown (KD) HeLa cells with 20 µg of total cell lysates. Hsp90 α serves as a loading control. The blot was incubated with anti-UCHL5 antibody (Cat#AGI2242, 1:5,000) and HRP-conjugated goat anti-rabbit secondary antibody respectively.



Flow cytometric analysis of UCHL5 expression in HepG2 cells using anti-UCHL5 antibody (Cat#AGI2242, 1:2,000). Green, isotype control; red, UCHL5.



Immunocytochemical staining of HepG2 cells with anti-UCHL5 antibody (Cat#AGI2242, 1:1,000). Nuclei were stained blue with DAPI; UCHL5 was stained magenta with Alexa Fluor® 647. Images were taken using Leica stellaris 5. Protein abundance based on laser Intensity and smart gain: Medium. Scale bar, 20 μ m.