

KD-Validated Anti-IQGAP1 Rabbit Monoclonal Antibody
Rabbit monoclonal antibody
Catalog # AGI2243**Specification****KD-Validated Anti-IQGAP1 Rabbit Monoclonal Antibody - Product Information**

Application	WB, FC
Primary Accession	P46940
Reactivity	Rat, Human, Mouse
Clonality	Monoclonal
Isotype	Rabbit IgG
Calculated MW	Predicted, 189 kDa; observed, 195 kDa
Gene Name	KDa
Aliases	IQGAP1 IQGAP1; IQ Motif Containing GTPase Activating Protein 1; P195; HUMORFA01; KIAA0051; SAR1; Ras GTPase-Activating-Like Protein IQGAP1; RasGAP-Like With IQ Motifs
Immunogen	A synthesized peptide derived from human IQGAP1

KD-Validated Anti-IQGAP1 Rabbit Monoclonal Antibody - Additional Information

Gene ID	8826
Other Names	
Ras GTPase-activating-like protein IQGAP1, p195, IQGAP1, KIAA0051	

KD-Validated Anti-IQGAP1 Rabbit Monoclonal Antibody - Protein Information**Name** IQGAP1**Synonyms** KIAA0051**Function**

Plays a crucial role in regulating the dynamics and assembly of the actin cytoskeleton. Recruited to the cell cortex by interaction with ILK which allows it to cooperate with its effector DIAPH1 to locally stabilize microtubules and allow stable insertion of caveolae into the plasma membrane (By similarity). Binds to activated CDC42 but does not stimulate its GTPase activity. Associates with calmodulin. May promote neurite outgrowth (PubMed:15695813). May play a possible role in cell cycle regulation by contributing to cell cycle progression after DNA replication arrest (PubMed:20883816).

Cellular Location

Cell membrane. Nucleus. Cytoplasm. Cytoplasm, cell cortex {ECO:0000250|UniProtKB:Q9JKF1}.
Apical cell membrane. Basolateral cell membrane {ECO:0000250|UniProtKB:Q9JKF1}.

Note=Subcellular distribution is regulated by the cell cycle, nuclear levels increase at G1/S phase (PubMed:20883816).

Tissue Location

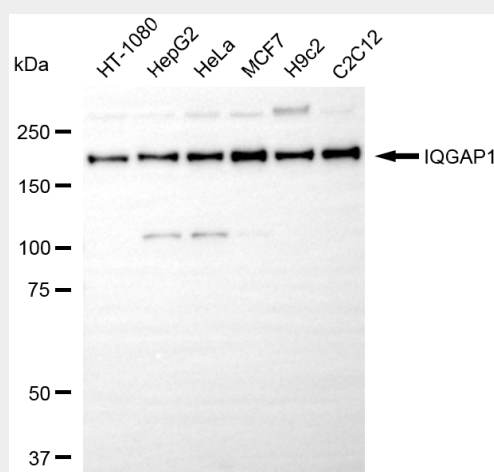
Expressed in the placenta, lung, and kidney (PubMed:8051149). A lower level expression is seen in the heart, liver, skeletal muscle and pancreas (PubMed:8051149)

KD-Validated Anti-IQGAP1 Rabbit Monoclonal Antibody - Protocols

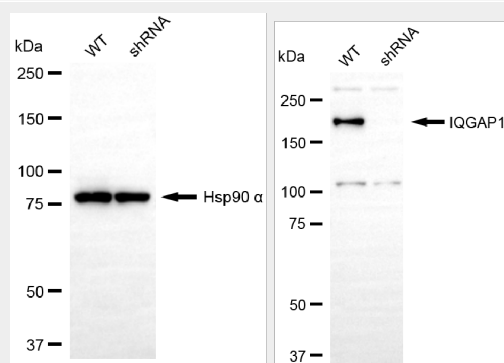
Provided below are standard protocols that you may find useful for product applications.

- [Western Blot](#)
- [Blocking Peptides](#)
- [Dot Blot](#)
- [Immunohistochemistry](#)
- [Immunofluorescence](#)
- [Immunoprecipitation](#)
- [Flow Cytometry](#)
- [Cell Culture](#)

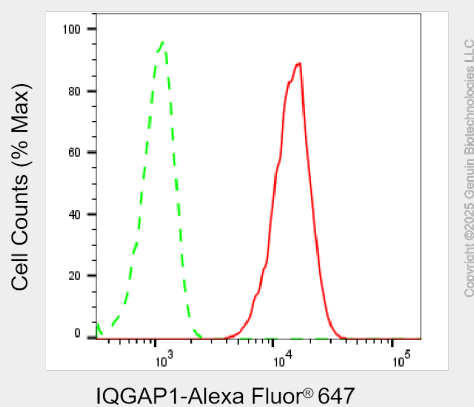
KD-Validated Anti-IQGAP1 Rabbit Monoclonal Antibody - Images



Western blotting analysis using anti-IQGAP1 antibody (Cat#AGI2243). Total cell lysates (30 µg) from various cell lines were loaded and separated by SDS-PAGE. The blot was incubated with anti-IQGAP1 antibody (Cat#AGI2243, 1:10,000) and HRP-conjugated goat anti-rabbit secondary antibody respectively.



Western blotting analysis using anti-IQGAP1 antibody (Cat#AGI2243). IQGAP1 expression in wild-type (WT) and IQGAP1 shRNA knockdown (KD) HepG2 cells with 20 μ g of total cell lysates. Hsp90 α serves as a loading control. The blot was incubated with anti-IQGAP1 antibody (Cat#AGI2243, 1:10,000) and HRP-conjugated goat anti-rabbit secondary antibody respectively.



Flow cytometric analysis of IQGAP1 expression in C2C12 cells using anti-IQGAP1 antibody (Cat#AGI2243, 1:2,000). Green, isotype control; red, IQGAP1.