

KD-Validated Anti-SWAP70 Mouse Monoclonal Antibody
Mouse monoclonal antibody
Catalog # AGI2245**Specification****KD-Validated Anti-SWAP70 Mouse Monoclonal Antibody - Product Information**

Application	WB
Primary Accession	Q9UH65
Reactivity	Rat, Human, Mouse
Clonality	Monoclonal
Isotype	Mouse IgG2b
Calculated MW	Predicted, 69 kDa; observed, 70 kDa
Gene Name	KDa SWAP70
Aliases	SWAP70; Switching B Cell Complex Subunit SWAP70; SWAP-70; Switch-Associated Protein 70; KIAA0640; SWAP Switching B-Cell Complex 70kDa Subunit; SWAP Switching B-Cell Complex Subunit 70; HSPC321
Immunogen	Recombinant protein of human SWAP70

KD-Validated Anti-SWAP70 Mouse Monoclonal Antibody - Additional Information

Gene ID	23075
Other Names	
Switch-associated protein 70, SWAP-70, SWAP70, KIAA0640	

KD-Validated Anti-SWAP70 Mouse Monoclonal Antibody - Protein Information**Name** SWAP70**Synonyms** KIAA0640**Function**

Phosphatidylinositol 3,4,5-trisphosphate-dependent guanine nucleotide exchange factor (GEF) which, independently of RAS, transduces signals from tyrosine kinase receptors to RAC. It also mediates signaling of membrane ruffling. Regulates the actin cytoskeleton as an effector or adapter protein in response to agonist stimulated phosphatidylinositol (3,4)-bisphosphate production and cell protrusion (By similarity).

Cellular Location

Cytoplasm. Cell membrane. Nucleus. Cell projection, lamellipodium. Cytoplasm, cytoskeleton. Note=In resting B-cells it is localized mainly in the cytoplasm and upon cell activation it is recruited to the plasma membrane and then translocates to the nucleus (PubMed:10681448) In activated, class-switching B-cells it is associated with membrane IgG but not IgM (PubMed:10681448). Localized to loose actin filament arrays located behind actively extending lamellipodia (PubMed:12925760).

Tissue Location

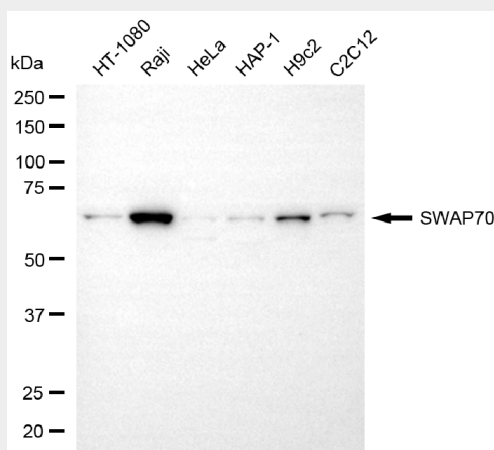
Expressed only in mature B-cells including those associated with mucosa-associated tissue and bronchus-associated tissue (PubMed:10681448). Widely expressed. Abundant in spleen, and fairly abundant in kidney, lung and liver. Also found in monocytes and macrophages (PubMed:12925760).

KD-Validated Anti-SWAP70 Mouse Monoclonal Antibody - Protocols

Provided below are standard protocols that you may find useful for product applications.

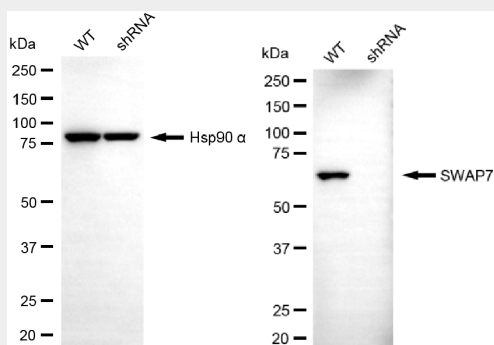
- [Western Blot](#)
- [Blocking Peptides](#)
- [Dot Blot](#)
- [Immunohistochemistry](#)
- [Immunofluorescence](#)
- [Immunoprecipitation](#)
- [Flow Cytometry](#)
- [Cell Culture](#)

KD-Validated Anti-SWAP70 Mouse Monoclonal Antibody - Images



Copyright ©2025 Genulin Biotechnologies LLC

Western blotting analysis using anti-SWAP70 antibody (Cat#AGI2245). Total cell lysates (30 µg) from various cell lines were loaded and separated by SDS-PAGE. The blot was incubated with anti-SWAP70 antibody (Cat#AGI2245, 1:5,000) and HRP-conjugated goat anti-mouse secondary antibody respectively.



Copyright ©2025 Genulin Biotechnologies LLC

Western blotting analysis using anti-SWAP70 antibody (Cat#AGI2245). SWAP70 expression in wild-type (WT) and SWAP70 shRNA knockdown (KD) HT-1080 cells with 20 µg of total cell lysates.

Hsp90 α serves as a loading control. The blot was incubated with anti-SWAP70 antibody (Cat#AGI2245, 1:5,000) and HRP-conjugated goat anti-mouse secondary antibody respectively.